

Getting Started with VMware Network Insight

VMware Network Insight services

vmware[®]

You can find the most up-to-date technical documentation on the VMware Web site at:

<https://docs.vmware.com/>

The VMware Web site also provides the latest product updates.

If you have comments about this documentation, submit your feedback to:

docfeedback@vmware.com

Copyright © 2017 VMware, Inc. All rights reserved. [Copyright and trademark information.](#)

VMware, Inc.
3401 Hillview Ave.
Palo Alto, CA 94304
www.vmware.com

Contents

1	Getting Started	5
	Sign Up for VMware Cloud Services	7
	Getting Started Checklist	8

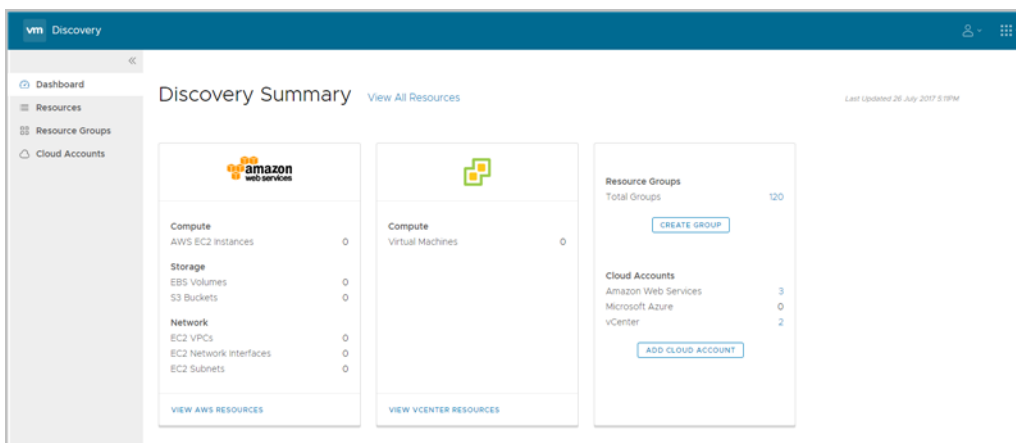
Getting Started

VMware Cloud provides several services, including VMware Discovery, VMware Cost Insight, and VMware Network Insight. Cloud, network, and security administrators can use these services to view usage details across all their clouds, both public and private.

VMware Discovery

The VMware Discovery service is used to "discover" resources associated with public and private cloud accounts that users can add to the service. Use VMware Discovery to see specific information about the resources in a cloud account, including virtual machines, hard disks, storage units, CPU usage, billing, and other information. The public cloud accounts that you can add to VMware Cloud include Amazon Web Services (AWS) and Microsoft Azure public cloud accounts. You can also add and discover resources for private cloud accounts, such as a vCenter Server.

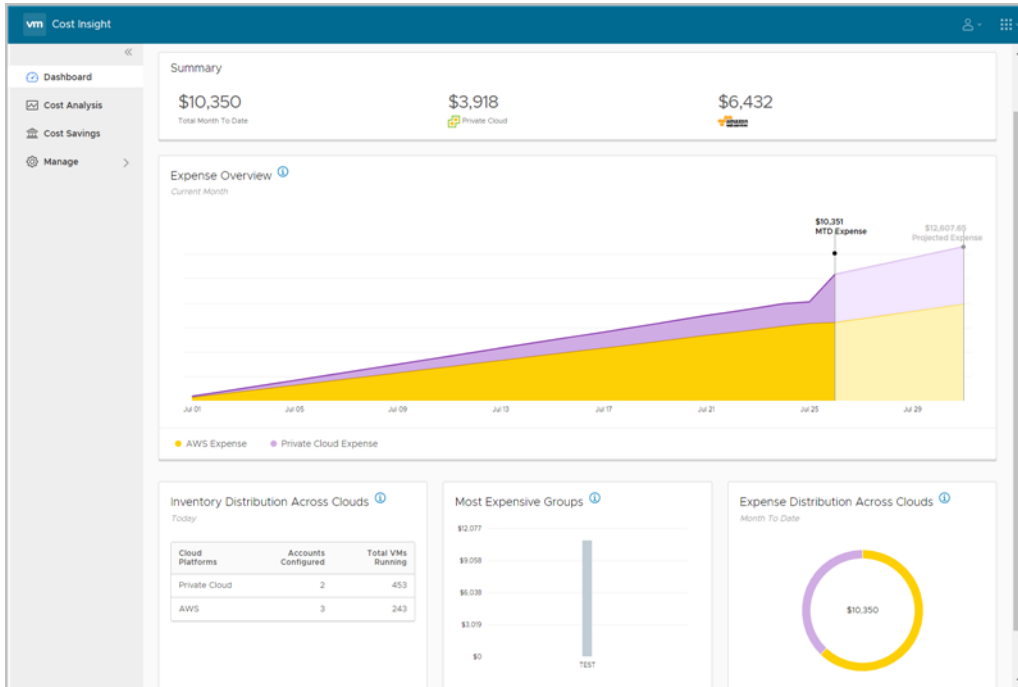
When you access VMware Discovery in VMware Cloud, you can use sophisticated filtering to display specific resources. You can also save specific search requirements as groups. Once a group has been created, you can display the group to see the resources and information that is most meaningful. For a cloud administrator who manages hundreds of virtual machines, hardware, and capacity, this is a useful set of tools.



VMware Cost Insight

You can use VMware Cost Insight to monitor and analyze the costs associated with your public and private cloud resources so that you can optimize your workload distribution strategy and keep on top of your cloud spending. Use VMware Cost Insight to track valuable information about your resources.

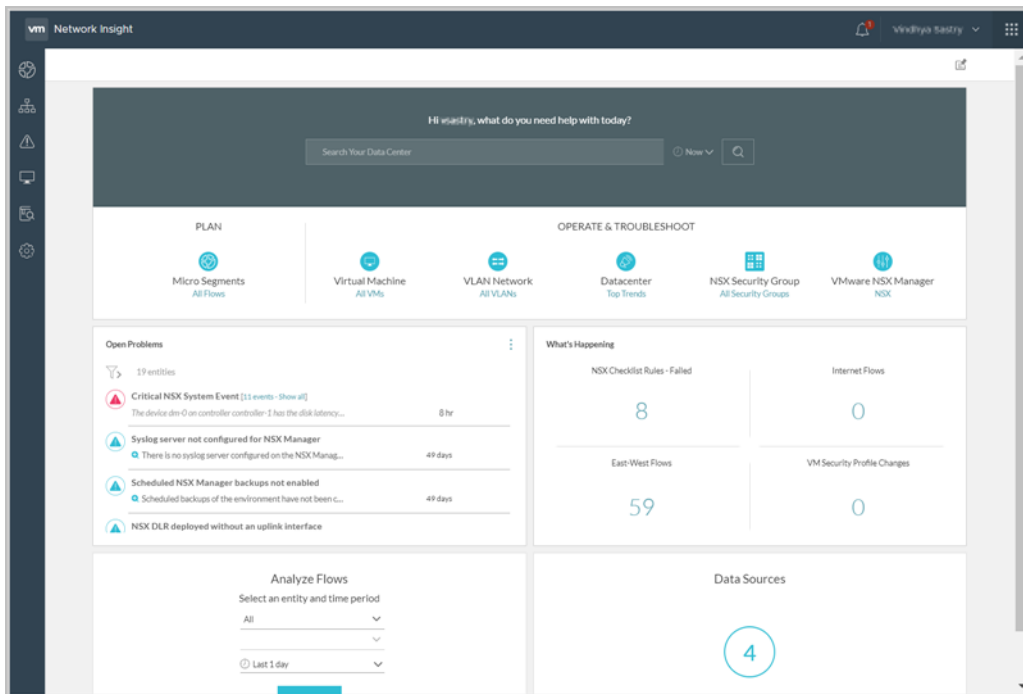
For example, track your spending across AWS clouds and private data center clouds. Or you can use VMware Cost Insight to track detailed expenses for multiple cloud services, accounts, and Elastic Compute Cloud (EC2) instance types.



VMware Network Insight

VMware Network Insight provides you visibility into the network flows and security of your on-premise and cloud applications, and helps you administer your NSX-based Software-Defined Data Center (SDDC). Use VMware Network Insight to monitor and diagnose problems with your network resources.

For example, you can check your network flows, your virtual machine and NSX security rules, plan for optimal micro segmentation, and take other network management actions.



For more information about these VMware Cloud services, refer to the documentation.

Getting Started

To get started with VMware Cloud services, follow these general steps:

- Sign up for one or more VMware Cloud services using your VMware ID.
- Discover resources associated with public and private cloud accounts that you can add to your services. You can see how to do this in *Using VMware Discovery*.
- Carry out VMware Cost Insight or VMware Network Insight specific tasks. For more information, refer to *Using VMware Cost Insight* and *Using Network Insight*.
- Invite users to your organizations. See how to manage users and more in *Using VMware Cloud*.

This chapter includes the following topics:

- [“Sign Up for VMware Cloud Services,”](#) on page 7
- [“Getting Started Checklist,”](#) on page 8

Sign Up for VMware Cloud Services

When you sign up for access to a particular VMware cloud service, or when someone invites you to join a service, you receive an email invitation containing a link that you use to sign up. You can use this link only once.

You sign up for VMware Cloud services with your VMware ID. If you do not have a My VMware account, you create one as you sign up.

Procedure

- 1 Click the link in your invitation mail.

- 2 Sign up for VMware Cloud:
 - a If you have a VMware ID, follow the steps to sign up to VMware Cloud with your VMware ID credentials.
 - b If you do not have a VMware ID, follow the steps to create your My VMware account, and sign up to VMware Cloud.
- 3 Log in to VMware Cloud with your VMware ID. If you are not redirected to the cloud service page, go to <https://www.mgmt.cloud.vmware.com/>.

What to do next

Once signed up, discover your public and private cloud accounts, and set up cloud services. See how to do this in *Using VMware Discovery*.

Getting Started Checklist

Before you onboard you need to download data collectors and have certain information about your public and private cloud accounts available. Use this checklist to help you get set up before your on-boarding call with the VMware Cloud services team.

Before You Onboard with VMware Cost Insight

To...	You need...
<input checked="" type="checkbox"/> Sign up for and log in to any of the VMware Cloud services.	A VMware ID. Set up a My VMware account with your corporate email address at https://my.vmware.com/web/vmware/login .
<input checked="" type="checkbox"/> Connect to VMware Cloud Services	HTTPS port 443 open to outgoing traffic with access through the firewall to: <ul style="list-style-type: none"> ■ *.vmwareidentity.com ■ gaz.csp-vidm-prod.com ■ *.vmware.com
<input checked="" type="checkbox"/> Add an AWS public cloud account	<ul style="list-style-type: none"> ■ 20-digit Access Key ID and corresponding Secret Access Key. ■ Amazon S3 bucket that is identified with the master account. ■ Appropriate user permissions: <ul style="list-style-type: none"> ■ AmazonEC2ReadOnlyAccess permission for master account, linked account and individual account users. ■ AmazonS3ReadOnlyAccess permission for master account and individual account owners.
<input checked="" type="checkbox"/> Add a Microsoft Azure public cloud account	<p>To add an Enterprise Azure public cloud account:</p> <ul style="list-style-type: none"> ■ Enrollment ID - Indicates the master account used for Enterprise billing. ■ API Access Key - Allows access to the Azure Billing API. <p>To add an individual Azure public cloud account:</p> <ul style="list-style-type: none"> ■ Subscription ID - Allows you access to your Azure subscriptions. ■ Client Application ID - Provides access to Microsoft Active Directory in your Azure individual account. ■ Client Application Secret Key - The unique secret key generated to pair with your Client Application ID. ■ Tenant ID - The authorization endpoint for the Active Directory applications you create in your Azure account.
<input checked="" type="checkbox"/> Add a VMware vSphere private cloud account	<ul style="list-style-type: none"> ■ The Cost Insight data collector OVA file which you can download from https://s3-us-west-1.amazonaws.com/vrealize-data-collector/VMware-Cloud-Services-Data-Collector.ova (675 MB). You'll install the data collector during your on-boarding meeting. ■ vCenter Server credentials. ■ Access to install a data collector in the vCenter Server.

Before You Onboard with VMware Network Insight

To...	You need...
<input checked="" type="checkbox"/> Sign up for and log in to any of the VMware Cloud services	A VMware ID. Set up a My VMware account with your corporate email address at https://my.vmware.com/web/vmware/login .
<input checked="" type="checkbox"/> Connect to VMware Cloud Services	HTTPS port 443 open to outgoing traffic with access through the firewall to: <ul style="list-style-type: none"> ■ *.vmwareidentity.com ■ gaz.csp-vidm-prod.com ■ *.vmware.com
<input checked="" type="checkbox"/> Add an AWS public cloud account	<ul style="list-style-type: none"> ■ 20-digit Access Key ID and corresponding Secret Access Key. ■ Appropriate user permissions: <ul style="list-style-type: none"> ■ AmazonEC2ReadOnlyAccess permission for master account, linked account and individual account users. ■ CloudWatchLogsReadOnlyAccess permission for master account and individual account owners. ■ A CloudWatch log group in AWS for publishing VPC level flow logs. For more information, see https://docs.aws.amazon.com/AmazonCloudWatch/latest/logs/Create-Log-Group.html. ■ A Flow Logs Role and a Flow Log for VPC. For more information, see http://docs.aws.amazon.com/AmazonVPC/latest/UserGuide/flow-logs.html#flow-logs-iam.
<input checked="" type="checkbox"/> Add a private cloud, physical routers, switches or firewalls	<ul style="list-style-type: none"> ■ The Network Insight data collector OVA file which you can download from https://s3-us-west-2.amazonaws.com/vrni-packages-archive-symphony/latest/VMWare-Networking-insight-proxy.ova (6 GB). You'll install the data collector during your on-boarding meeting. ■ The IP/FQDN and the credentials of the specific data source to which you want to connect, such as a private cloud, physical router, switch, or firewall.

