

VMware User Environment Manager SyncTool Administration Guide

VMware User Environment Manager 9.2

vmware[®]

You can find the most up-to-date technical documentation on the VMware Web site at:

<https://docs.vmware.com/>

The VMware Web site also provides the latest product updates.

If you have comments about this documentation, submit your feedback to:

docfeedback@vmware.com

Copyright © 2017 VMware, Inc. All rights reserved. [Copyright and trademark information.](#)

VMware, Inc.
3401 Hillview Ave.
Palo Alto, CA 94304
www.vmware.com

Contents

VMware User Environment Manager SyncTool Administration Guide	5
Introduction to VMware User Environment Manager SyncTool	5
User Environment Manager Architecture with SyncTool	6
Overview of the User Environment Manager Infrastructure with SyncTool	6
Before You Deploy SyncTool	8
Overview of the SyncTool Deployment	8
Infrastructure Requirements	8
Software Requirements	9
Installing SyncTool	9
Install SyncTool Manually	9
Unattended Installation of SyncTool	10
Configuring SyncTool	10
Create the SyncTool Group Policy Object	11
SyncTool Group Policy Reference	12
Network Detection Settings	14
Run SyncTool at Logoff	15
Starting SyncTool in Resident Mode	15
Configuring SyncTool in NoAD Mode	16
Configuring SyncTool General Settings in NoAD Mode	17
Configuring Network Detection Settings in NoAD Mode	21
SyncTool Command-Line Arguments	23
Running a One-Time Synchronization	24
Group Policy Configuration on Computer OU	24
Index	27

VMware User Environment Manager SyncTool Administration Guide

The *VMware User Environment Manager SyncTool Administration* guide provides information about installing and using the SyncTool.

Intended Audience

This information is intended for User Environment Manager administrators who want to provide synchronization capabilities for User Environment Manager configuration files and profile archives by using User Environment Manager SyncTool. These capabilities are useful to end users with laptops or users who are connected to a network with limited bandwidth.

Introduction to VMware User Environment Manager SyncTool

The VMware User Environment Manager SyncTool is an optional component of User Environment Manager that does not require additional licensing. It provides capabilities for synchronizing configuration files and profile archives from User Environment Manager for users with laptops or limited network bandwidth.

SyncTool synchronizes the User Environment Manager profile archives and configuration files. SyncTool makes users independent of offline files for all files related to User Environment Manager.

NOTE SyncTool synchronizes only VMware User Environment Manager files. If you need to make other data available offline, use the Windows offline files feature or another offline files product.

When using Windows Offline Files to make the home share available offline for users, use a separate location for storing the User Environment Manager profile archives, one for which Windows Offline Files support is not configured.

Working Offline Scenario

Laptop users who are not always connected to the corporate network need access to their User Environment Manager files while offline. SyncTool makes all VMware User Environment Manager files available locally and synchronizes the changes when the users connect to the corporate network.

Slow WAN or Limited Bandwidth Scenario

Users connected to the central and profile archives shares over a slow WAN connection can experience slow performance, and continuously roaming personal settings can consume too much network resources. To optimize the user experience and to limit the network traffic, all the User Environment Manager files can be used locally and only be synchronized based on configurable network thresholds.

User Environment Manager Architecture with SyncTool

SyncTool is an additional client component, which works together with the User Environment Manager client component, FlexEngine. It synchronizes the configuration files and profile archives on client devices with the User Environment Manager shares.

Installing SyncTool on a device provides synchronization capabilities only for that device. You must install SyncTool on each client device for which you want to provide the synchronization capabilities.

SyncTool is supported only on client operating systems on which User Environment Manager is installed and configured. You do not need to change the existing User Environment Manager configuration, unless you are currently using Windows Offline Files to synchronize User Environment Manager files.

NOTE You must verify that User Environment Manager is correctly configured and running on your infrastructure before implementing SyncTool.

SyncTool synchronizes all User Environment Manager files, personal settings and configuration, to a configurable local location on the client computer and keeps the central and local locations synchronized. The configurable local location is called Local Sync Path.

The synchronization occurs at login before FlexEngine performs a path-based import, at logout after FlexEngine performs a path-based export, and, optionally, during the session to synchronize changes to the settings of applications for which DirectFlex support is configured. For information about configuring the synchronization with SyncTool at logout, see [“Run SyncTool at Logoff,”](#) on page 15.

To synchronize User Environment Manager files during the user session, run SyncTool in resident mode. For more information, see [“Starting SyncTool in Resident Mode,”](#) on page 15. Synchronizing during the session is optional and is not required for SyncTool to function properly. However, to limit the number of files that need synchronizing at login and logout, you should also synchronize changes during the session.

Overview of the User Environment Manager Infrastructure with SyncTool

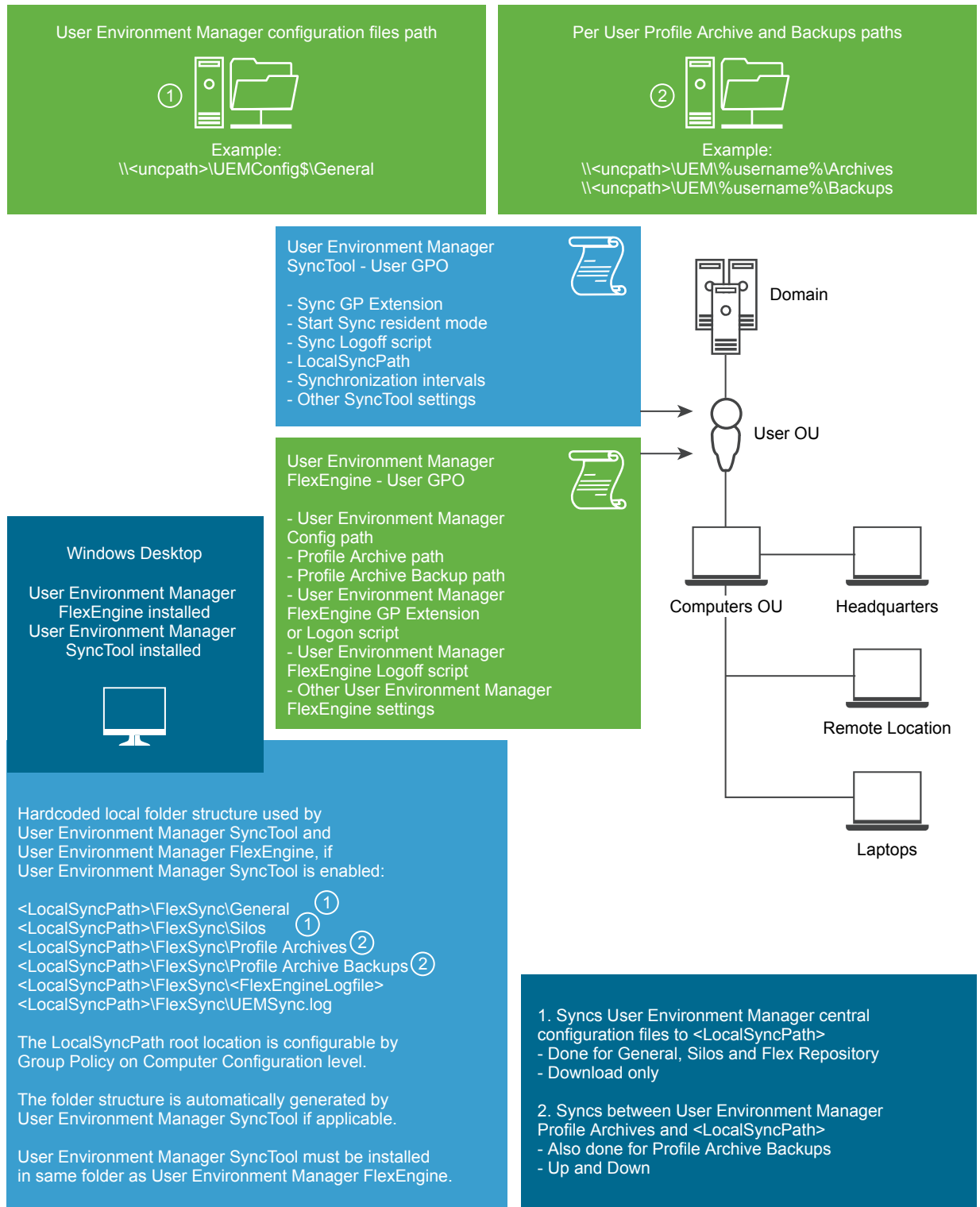
The infrastructure of the User Environment Manager with SyncTool consists of all required User Environment Manager components and additional components of SyncTool.

The standard User Environment Manager components are marked in green. Standard components include a configuration files share, a file share with user-specific profile archive folders, FlexEngine, and a User Environment Manager Group Policy Object (GPO), which configures FlexEngine.

The light blue objects are the additional SyncTool components. They consist of the SyncTool client component and the SyncTool GPO, which enables and configures SyncTool.

For detailed installation and configuration steps, see “Configuring SyncTool,” on page 10.

Figure 1. User Environment Manager Infrastructure with SyncTool



Before You Deploy SyncTool

Your system must meet certain infrastructure and software requirements before you deploy SyncTool. You should become familiar with the SyncTool deployment process.

Overview of the SyncTool Deployment

Before you deploy SyncTool, User Environment Manager must be installed and running on the designated client machines.

NOTE When using SyncTool, the configuration for User Environment Manager must not be modified. User Environment Manager configuration settings for configuration files, profile archives, profile archive backups, and the FlexEngine log file must still use network paths.

- 1 Install SyncTool on designated client machines, in the same installation directory as User Environment Manager. See [“Installing SyncTool,”](#) on page 9.
- 2 Create SyncTool Group Policy configuration by using the provided Administrative Template. See [“Create the SyncTool Group Policy Object,”](#) on page 11 and [“SyncTool Group Policy Reference,”](#) on page 12. You can create a Group Policy Object (GPO) for the SyncTool settings, or add them to your existing User Environment Manager GPO.
- 3 Add SyncTool logoff command as described in [“Run SyncTool at Logoff,”](#) on page 15.
- 4 Configure a logon script, which starts FlexEngine with the `-OfflineImport` argument. For details, see *Installing and Configuring VMware User Environment Manager*.
- 5 (Optional) Configure SyncTool to run in resident mode during sessions as described in [“Starting SyncTool in Resident Mode,”](#) on page 15.

To run SyncTool, the minimal required configuration is as follows:

- Configure Local Sync Path Group Policy setting.
- Enable Run VMware UEM SyncTool during logon Group Policy setting.
- Add SyncTool logoff command.
- Configure logon script to perform offline import.
- Apply SyncTool GPO to users.

NOTE Applying the SyncTool Group Policy settings to users who work on computers that do not have SyncTool installed does not affect the work of these machines. The SyncTool Group Policy settings do not affect the behavior of User Environment Manager on computers where SyncTool is not installed.

Infrastructure Requirements

Your environment must meet certain infrastructure requirements to run SyncTool.

- Correctly configured and running User Environment Manager.
- Group Policy configuration for SyncTool.
- A local folder that is unique per user on each client device that uses SyncTool. This folder must be configured as Local Sync Path in the SyncTool Group Policy configuration.

Software Requirements

Your environment must meet certain software requirements to run SyncTool.

Supported operations systems:

- Windows 7 Professional, Enterprise, and Ultimate x86 and x64 SP1
- Windows 8.1 Professional and Enterprise x86 and x64 with Update
- Windows 10 Version 1703 (Creators Update) Professional and Enterprise x86 and x64

The installation of SyncTool requires User Environment Manager 9.2 to be installed.

NOTE Configure the Local Sync Path to a location inside the user profile. For example, %LOCALAPPDATA%\VMware UEM creates a unique location per user even when sharing a device among users.

NOTE Use a local user profile because it is most suitable for offline use.

Installing SyncTool

You can install SyncTool manually, or you can perform an unattended installation.

NOTE The SyncTool MSI file has a digital signature, which the Windows Installer infrastructure validates when the installation starts. The installation process includes a certificate revocation check for which the system requires Internet access. If the Internet connectivity is not sufficient, the installation continues, but only after several timeouts. During the process, the installer seems to hang without providing any feedback.

Install SyncTool Manually

You install SyncTool by running VMware UEM SyncTool 9.2 x86.msi or VMware UEM SyncTool 9.2 x64.msi, depending on your operating system. This launches a setup wizard which guides you through the installation.

Prerequisites

- Verify that you have administrative privileges on the account where you will run the MSI file.
- Download and extract the MSI file package for your operating system.
- Install User Environment Manager on the machine where you will install SyncTool.

Procedure

- 1 Run the MSI file that corresponds to your OS architecture and click **Next**.
- 2 Read and accept the **End User License Agreement** and click **Next**.
- 3 Select the destination folder where you want to install the application and click **Next**.

NOTE You must install SyncTool in the same folder as FlexEngine.

- 4 Click **Install**, and after the installation is complete, click **Finish**.

Unattended Installation of SyncTool

The SyncTool MSI supports unattended installations by using MSI properties to specify installation parameters. To perform an unattended installation, run the `msiexec` utility from the command line with the following property.

Property	Description
INSTALLDIR	The absolute path to the installation directory. The default value is %ProgramFiles%\Immidio\Flex Profiles.

The following is an example of a custom unattended installation command using the `INSTALLDIR` property to specify the path to the installation directory. It is split across multiple lines for readability only.

```
msiexec.exe /i "VMware UEM SyncTool 9.2 x86.msi" /qn
INSTALLDIR="D:\Apps\VMware UEM" /!* InstallSyncTool.log
```

The following command is an example of a typical unattended installation that installs SyncTool in the default installation directory.

```
msiexec.exe /i "VMware UEM SyncTool 9.2 x86.msi" /qn
```

Configuring SyncTool

SyncTool requires different configuration depending on whether you want to run it in an offline scenario or in a slow WAN or limited bandwidth scenario.

Working Offline Scenario

Laptop users that are not always connected to the corporate network need access to their User Environment Manager files while offline. SyncTool transparently makes all User Environment Manager files available locally and synchronizes the changes when the user is online and SyncTool runs.

In this scenario, SyncTool is deployed to provide access to work at home, or other locations for users when they are not connected to the corporate network.

To support this scenario, perform the following steps:

- 1 Install SyncTool on each client that needs to work offline. See [“Installing SyncTool,”](#) on page 9.
- 2 Configure a GPO and link it to the users who need to work offline. The specific policy settings are described in [“SyncTool Group Policy Reference,”](#) on page 12.
- 3 Configure a logon script, which starts FlexEngine with the `-OfflineImport` argument. For details, see [Installing and Configuring VMware User Environment Manager.](#)

Slow WAN or Limited Bandwidth Scenario

Users who are connected to the central User Environment Manager configuration and profile shares over a slow WAN connection can experience slow performance and continuously roaming personal settings can consume too much network resources. To optimize the user experience and to limit network traffic, all the User Environment Manager files can be used locally and only be synchronized based on the configurable network thresholds.

To support this scenario, perform the following steps:

- 1 Install SyncTool on each client that needs to work offline. See [“Installing SyncTool,”](#) on page 9.
- 2 Configure a GPO and link it to the users who need to work offline. The specific policy settings are described in [“SyncTool Group Policy Reference,”](#) on page 12.

- 3 Depending on your requirements, configure one or both network thresholds as described in “[Network Detection Settings](#),” on page 14.
- 4 Configure a logon script, which starts FlexEngine with the `-OfflineImport` argument. For details, see *Installing and Configuring VMware User Environment Manager*.

Create the SyncTool Group Policy Object

The VMware UEM SyncTool USER.admx administrative template supports user configuration. FlexEngine ignores the SyncTool Group Policy settings if SyncTool is not installed. This way, you can apply the settings to every user without affecting the users who do not have SyncTool installed.

Advanced scenarios where you can configure the SyncTool Group Policy settings on the computer level, such as configuring different network threshold settings for different computers, are also supported.

Procedure

- 1 Copy the VMware UEM.admx and VMware UEM SyncTool USER.admx ADMX templates and their corresponding ADML files from the download package to the correct PolicyDefinitions folder on your Windows Domain Controller.

The SyncTool ADMX files are located in the Administrative Templates (ADMX) folder in the download package, and their corresponding ADML files are located in the Administrative Templates (ADMX)\en-US folder.

- 2 Open the Group Policy Management Console.
- 3 Create a GPO or select an existing GPO that is applied to the users for which you want to configure SyncTool.
- 4 Right-click the GPO and click **Edit**.

The Group Policy Management Editor opens.

What to do next

Configure the SyncTool Group Policy settings. See “[SyncTool Group Policy Reference](#),” on page 12.

To run SyncTool, the minimal required configuration is as follows:

- Configure Local Sync Path Group Policy setting.
- Enable Run VMware UEM SyncTool during the logon Group Policy setting.
- Add SyncTool logoff command.
- Apply SyncTool Group Policy Object to users.
- Configure logon script to perform offline import.

SyncTool Group Policy Reference

After you create the SyncTool Group Policy, you can configure the GPO settings by using the Group Policy Management Editor.

Table 1. SyncTool Group Policy Settings

Setting	Description
Run VMware UEM SyncTool during logon	<p>Starts SyncTool during the login process before FlexEngine performs its path-based import. This way, the latest changes are always synchronized before FlexEngine processes them at logon.</p> <p>IMPORTANT To synchronize changes at logoff, make sure that the SyncTool logoff command is configured by using the Group Policy logoff script mechanism as described in “Run SyncTool at Logoff,” on page 15.</p> <p>If FlexEngine is configured to run as a Group Policy extension and you want to run FlexEngine at logon when working offline, configure a logon script, which starts FlexEngine with the <code>-OfflineImport</code> argument as described in <i>Installing and Configuring VMware User Environment Manager</i>.</p>
Local Sync Path	The location where SyncTool stores all the User Environment Manager files. Configure to a local path, unique per user. Use <code>%LOCALAPPDATA%\VMware UEM</code> .
Watch local profile archive changes	Automatically triggers a synchronization in resident mode when a local modification to a profile archive is detected. For example, when closing an application for which DirectFlex is configured.
Synchronization Intervals	<p>During resident mode, synchronization occurs periodically. Configure this setting to specify how frequently the synchronization occurs. If you do not configure this setting, synchronization takes place every 3600 seconds (every hour).</p> <ul style="list-style-type: none"> ■ FlexConfig. Controls the synchronization interval of the User Environment Manager configuration files path, which contains all Flex config (<code>.ini</code>) files. Specify this value in seconds. ■ FlexRepository. Controls the synchronization interval of the Flex Repository folder, which contains all the User Environment, Condition Set, and Application Migration (.XML) files. Specify this value in seconds. ■ Profile Archives. Controls the synchronization interval of the VMware User Environment Manager profile archives, which contain personal settings. Specify this value in seconds.
Synchronization Retry Intervals	<p>In resident mode, if a synchronization fails or is not allowed due to network thresholds, a retry is performed periodically. Configure this setting to specify how frequently the retry happens. If you do not configure this setting, retry takes place every 300 seconds (every 5 minutes).</p> <ul style="list-style-type: none"> ■ FlexConfig. Controls the retry interval when the synchronization of the VMware User Environment Manager configuration files path has failed. Specify this value in seconds. ■ FlexRepository. Controls the retry interval when the synchronization of the Flex Repository folder has failed. Specify this value in seconds. ■ Profile Archives. Controls the retry interval when the synchronization of the VMware User Environment Manager profile archives has failed. Specify this value in seconds.

Table 1. SyncTool Group Policy Settings (Continued)

Setting	Description
VMware UEM SyncTool logging	<p>If Create VMware UEM SyncTool log file is enabled, a FlexSync.log file is created in the configured Local Sync Path.</p> <ul style="list-style-type: none"> ■ Log level. Controls the level of detail that is logged. Avoid using Debug or Info in production, because the amount of logging information can impact the performance. ■ Maximum log file size. When specified, the log file is recreated after that size is reached. If the maximum size is set to 0, the file expands indefinitely. Specify this value in kilobytes (kB). ■ Create central sync status log file. Logs the most important synchronization status to a central log file. A file named FlexSyncStatus-%COMPUTERNAME%.log is created during logoff, in the same folder as the log file of FlexEngine. ■ Maximum sync status log file size. When specified, the sync status log file is truncated if the maximum threshold size is reached. It is truncated to the size specified in the Truncate sync status log file to this size setting. If the maximum size is set to 0, the file expands indefinitely. Specify this value in kilobytes (kB). ■ Truncate sync status log file to this size. When configured, this setting specifies the size of the sync status log file to maintain after the maximum sync status log file size threshold is reached and the log file is truncated. Specify this value in kilobytes (kB). ■ Maximum number of log lines in resident mode UI. Limits the number of log lines in the UI. This means that after this number, the old lines are removed when new lines are added.
Synchronize profile archive backups	<p>Use this setting to configure when profile archive backups are synchronized. If you configure backups to be synchronized during a session, you can choose to do this once per session.</p> <p>NOTE Backups are never synchronized at login.</p> <p>NOTE If you do not configure this setting, profile archive backups are never synchronized.</p>
Sync local FlexEngine log file to network at logoff	When enabled, the local FlexEngine log file is uploaded to the central location. The name of the log file is modified to include the computer name.
Do not use laptop conflict resolution	Controls the behavior when a conflict is detected between a local and a central profile archive. A conflict occurs when both the local and central profile archives have changed since the last synchronization. In the default behavior, known as laptop conflict resolution, the local profile archive is selected. If this setting is enabled, conflict resolution for laptops is not applied and the profile archive with the most recent changes is selected.
Hide 'Sync' button in resident mode UI	When enabled, the Sync button is hidden in the resident mode UI.
Do not synchronize icons	When enabled, the .ICO files are not synchronized. This can improve performance on slow networks.
Trigger FlexEngine refresh	When enabled, SyncTool triggers a FlexEngine refresh if the synchronization results in updates for one or more of the selected item types: DirectFlex configuration, ADMX-based settings, drive mappings, environment variables, file type associations, Horizon Smart Policies, printer mappings, shortcuts, and triggered task settings.
Files to synchronize	Use this setting to only synchronize the configuration files or the user-specific files. By default, SyncTool synchronizes both Flex configuration files and the user-specific profile archives, profile archive backups, and log files.

Network Detection Settings

Users who are connected to the central User Environment Manager configuration and profile archives shares over a slow WAN connection might experience slow performance and continuously roaming personal settings can consume too much network resources. To optimize the user experience and limit network traffic, all User Environment Manager files can be used locally and be synchronized only based on configurable network thresholds.

These network thresholds are configured through settings in the Network Detection category. You can define a threshold based on network bandwidth, or based on network latency. It is also possible to combine the two. Synchronization occurs only when the defined thresholds are met.

Table 2. Network Detection Settings

Setting	Description
Prefer IPv6 when resolving host names	Controls the behavior when a host name resolves to both IPv4 and IPv6. If you have not configured network thresholds, you do not need to configure this setting.
DFS namespace support	Enable this setting to perform the network measurements correctly when using DFS namespaces to store User Environment Manager files. If you have not configured network thresholds, you do not need to configure this setting.
Network measurement settings	Control how network measurements are performed when network thresholds are configured. The ping cache setting controls how long network measurement results are retained, to prevent performing multiple measurements for User Environment Manager network paths that are hosted on the same server. If these settings are not configured, 3 pings are done of 2048 bytes with a timeout of 5 seconds. The default ping cache is 60 seconds. If you have not configured network thresholds, you do not need to configure this setting.
Network threshold: Bandwidth	The administrator specifies the minimum bandwidth that must be available for synchronization to occur. You can combine this setting with the latency threshold.
Network threshold: Latency	The administrator specifies the maximum latency acceptable for synchronization to occur. You can combine this setting with the bandwidth threshold.
Force synchronization at logon	Overrides the behavior where synchronization does not occur when network thresholds do not meet the configured requirements during login. Enable Force sync at logon to always synchronize all User Environment Manager files at login. If you want to synchronize only certain file types, also select one or more of the other options. If you have not configured network thresholds, you do not need to configure these settings.
Force synchronization at logoff	Overrides the behavior where synchronization does not occur when network thresholds do not meet the configured requirements during logoff. Enable Force sync at logoff to always synchronize all User Environment Manager files at logoff. If you want to synchronize only certain file types, also select one or more of the other options. If you have not configured network thresholds, you do not need to configure these settings.
Force synchronization in resident mode	Overrides the behavior where synchronization does not occur when the network thresholds do not meet the configured requirements in resident mode. Enable Force sync in resident mode to always synchronize all User Environment Manager files during a session. If you want to synchronize only certain file types, also select one or more of the other options. If you have not configured network thresholds, you do not need to configure these settings.

Run SyncTool at Logoff

To synchronize the latest changes to the network at logoff, SyncTool must run at logoff. You can do this by using the logoff script Group Policy setting and configuring the script in the same GPO that contains the SyncTool Group Policy settings.

Alternatively, you can add the SyncTool logoff command to an existing logoff script. Use User Configuration\Windows Settings\Scripts for this purpose.

IMPORTANT Make sure that SyncTool is run after the FlexEngine export. If both the FlexEngine and the SyncTool GPOs are applied at the same OU, ensure that the SyncTool GPO has a lower Link Order number, so that the SyncTool logoff task takes place after the FlexEngine export.

Procedure

- 1 To run SyncTool at logoff, specify the `-Logoff` argument:

```
"C:\Program Files\Immidio\Flex Profiles\FlexSyncTool.exe" -Logoff
```
- 2 (Optional) To display a splash screen with progress information, specify the `-ShowDialog` argument.
- 3 To run SyncTool as a logoff script from a GPO, use the following settings:

Option	Value
Script Name	C:\Program Files\Immidio\Flex Profiles\FlexSyncTool.exe
Script Parameters	-logoff -showdialog

Starting SyncTool in Resident Mode

To limit the amount of files that require synchronizing at logon and logoff, synchronize changes during the session. To do this, configure SyncTool to run in resident mode.

To start SyncTool in resident mode, it must be started with the `-Resident` argument after a user logs on:

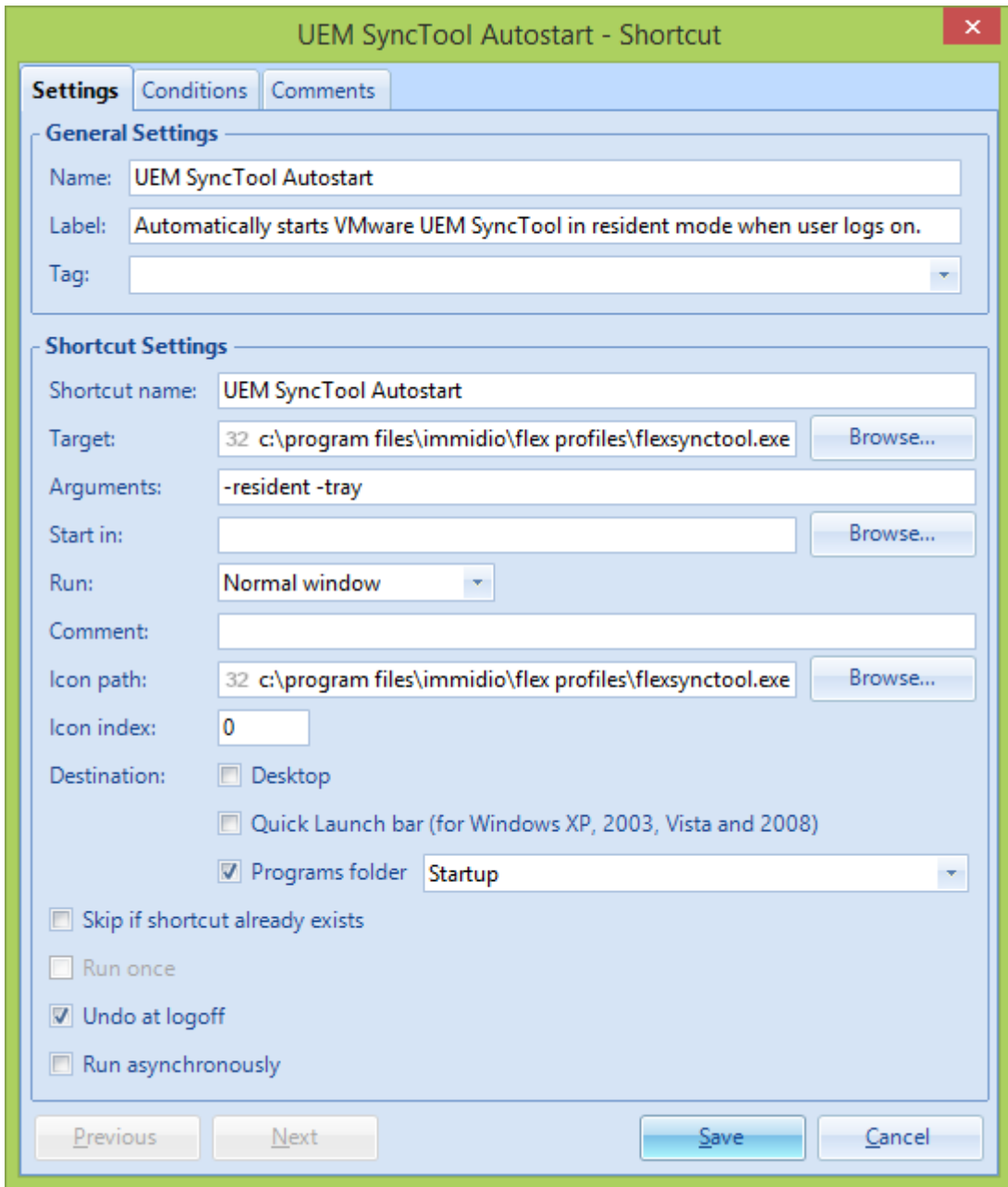
```
FlexSyncTool.exe -Resident
```

By default, in resident mode SyncTool runs in the background, with no user interface. To display the user interface, provide the optional `-Tray` argument.

The recommended way of starting SyncTool in resident mode is by creating a shortcut in the Startup folder of the Windows Start Menu. Shortcuts in this folder are automatically launched when Windows Explorer starts.

NOTE Do not enable the 'Run asynchronously' option, because this might cause the shortcut to be created after Windows Explorer has already started.

NOTE If users also log on to computers managed by VMware User Environment Manager where SyncTool is not installed, configure a condition on this shortcut, which checks whether the SyncTool is installed.



Configuring SyncTool in NoAD Mode

The NoAD mode is an alternative to configuring the SyncTool with Active Directory Group Policy.

To use SyncTool in NoAD mode, you must have installed and configured User Environment Manager in NoAD mode. SyncTool inherits the NoAD installation settings from User Environment Manager. You then need to configure general SyncTool settings and network detection settings in the NoAD.xml file that you created while configuring User Environment Manager. For details about installing and configuring User Environment Manager in NoAD mode, see the *Installing and Configuring VMware User Environment Manager Guide*.

Configuring SyncTool General Settings in NoAD Mode

You can configure general settings for the SyncTool without using Active Directory.

Add and edit the general settings in the NoAD.xml file.

Table 3. SyncTool General Settings in NoAD Mode

Setting	XML attribute	Description
Enable SyncTool	Synctool	To enable this setting, set the value to 1. If enabled, SyncTool starts during the login process before FlexEngine performs its path-based import. This way, the latest changes are always synchronized before FlexEngine processes them at login. At logout, SyncTool runs after FlexEngine, synchronizing the latest changes.
Local sync path	LocalSyncPath	The location where SyncTool stores all the User Environment Manager files. Configure to a local path, unique per user. Use %LOCALAPPDATA%\VMware UEM.
Watch local profile archive changes	WatchLocalProfileArchiveChanges	To enable this setting, set the value to 1. If enabled, a synchronization is automatically triggered in resident mode when a local modification to a profile archive is detected. For example, when closing an application for which DirectFlex is configured.
Synchronization Intervals	ConfigSyncInterval RepositorySyncInterval ProfileArchiveSyncInterval	<p>During resident mode, synchronization occurs periodically. Configure this setting to specify how frequently the synchronization occurs. If you do not configure this setting, synchronization takes place every 3600 seconds (every hour).</p> <ul style="list-style-type: none"> ■ ConfigSyncInterval. Controls the synchronization interval of the User Environment Manager configuration files path, which contains all Flex config (.ini) files. Specify this value in seconds. ■ RepositorySyncInterval. Controls the synchronization interval of the Flex Repository folder, which contains all the User Environment, Condition Set, and Application Migration (XML) files. Specify this value in seconds. ■ ProfileArchiveSyncInterval. Controls the synchronization interval of the VMware User Environment Manager profile archives, which contain personal settings. Specify this value in seconds.

Table 3. SyncTool General Settings in NoAD Mode (Continued)

Setting	XML attribute	Description
Synchronization retry intervals	ConfigRetryInterval RepositoryRetryInterval ProfileArchiveRetryInterval	<p>In resident mode, if a synchronization fails or is not allowed due to network thresholds, a retry is performed periodically. Configure this setting to specify how frequently the retry happens. If you do not configure this setting, retry takes place every 300 seconds (every 5 minutes).</p> <ul style="list-style-type: none"> ■ ConfigRetryInterval. Controls the retry interval when the synchronization of the VMware User Environment Manager configuration files path has failed. Specify this value in seconds. ■ RepositoryRetryInterval. Controls the retry interval when the synchronization of the Flex Repository folder has failed. Specify this value in seconds. ■ ProfileArchiveRetryInterval. Controls the retry interval when the synchronization of the VMware User Environment Manager profile archives has failed. Specify this value in seconds.

Table 3. SyncTool General Settings in NoAD Mode (Continued)

Setting	XML attribute	Description
VMware UEM SyncTool logging	SyncToolLog SyncToolLogLevel SyncToolLogMaxSize SyncToolStatusLog SyncToolStatusLogMaxSize SyncToolStatusLogLeaveSize SyncToolResidentMaxLogLines	<p>Set SyncToolLog to 1 to create a FlexSync .log file in the configured Local Sync Path.</p> <p>Once you enable the SyncTool log, configure the following settings.</p> <p>SyncToolLogLevel. Controls the level of detail that is logged. Use one of the following values:</p> <ul style="list-style-type: none"> ■ 0 (DEBUG) ■ 1 (INFO) ■ 2 (WARN) ■ 3 (ERROR) <p>NOTE Do not use 0 (DEBUG) or 1 (INFO) in production environments, because the amount of logging information might slow down the login and logout process.</p> <p>SyncToolLogLevel. Controls the level of detail that is logged. Use one of the following values:</p> <ul style="list-style-type: none"> ■ SyncToolLogMaxSize. When specified, the log file is recreated after that size is reached. If the maximum size is set to 0, the file expands indefinitely. Specify this value in kilobytes (kB). ■ SyncToolStatusLog. To create the central status log, set the value to 1. Logs the most important synchronization status to a central log file. A file named FlexSyncStatus-%COMPUTERNAME%.log is created during logout, in the same folder as the log file of FlexEngine. ■ SyncToolStatusLogMaxSize. When specified, the sync status log file is truncated if the maximum threshold size is reached. It is truncated to the size specified in the SyncToolStatusLogLeaveSize setting. If the maximum size is set to 0, the file expands indefinitely. Specify this value in kilobytes (kB). ■ SyncToolStatusLogLeaveSize. When configured, this setting specifies the size of the sync status log file to maintain after the

Table 3. SyncTool General Settings in NoAD Mode (Continued)

Setting	XML attribute	Description
		<p>SyncToolStatusLogMaxSize threshold is reached and the log file is truncated. Specify this value in kilobytes (kB).</p> <ul style="list-style-type: none"> ■ SyncToolResidentMaxLogLines. Limits the number of log lines in the UI. This means that after the threshold is reached, the old lines are removed when new lines are added.
Synchronize profile archive backups	SyncBackups	<p>Use this setting to configure when profile archive backups are synchronized. If you configure backups to be synchronized during a session, you can choose to do this once per session. Enter one of the following values:</p> <ul style="list-style-type: none"> ■ 1 (Only during session) ■ 2 (Only once during session) ■ 3 (Only at logout) ■ 4 (During session and at logout) <p>NOTE Backups are never synchronized at login.</p> <p>NOTE If you do not configure this setting, profile archive backups are never synchronized.</p>
Sync the local FlexEngine log file to network at logout	SyncFlexEngineLog	<p>To enable this setting, set the value to 1. When enabled, the local FlexEngine log file is uploaded to the central location. The name of the log file is modified to include the computer name.</p>
Do not use laptop conflict resolution	DoNotUseLaptopConflictResolution	<p>To enable this setting, set the value to 1. Enabling this setting means you will disable laptop conflict resolution.</p> <p>Controls the behavior when a conflict is detected between a local and a central profile archive. A conflict occurs when both the local and central profile archives have changed since the last synchronization. In the default behavior, known as laptop conflict resolution, the local profile archive is selected. If this setting is enabled, conflict resolution for laptops is not applied and the profile archive with the most recent changes is selected.</p>
Hide the Sync button in resident mode UI	HideSyncButton	<p>To enable this setting, set the value to 1. When enabled, the Sync button is hidden in the resident mode UI.</p>
Do not synchronize icons	DoNotSynchronizeIcons	<p>To enable this setting, set the value to 1. When enabled, the ICO files are not synchronized. This can improve performance on slow networks.</p>

Table 3. SyncTool General Settings in NoAD Mode (Continued)

Setting	XML attribute	Description
Trigger FlexEngine refresh	DirectFlexRefreshAfterSync UEMRefreshAdmXAfterSync UEMRefreshDriveMappingAfterSync UEMRefreshEnvVarAfterSync UEMRefreshFtaAfterSync UEMRefreshHorizonAfterSync UEMRefreshPrinterMappingAfterSync UEMRefreshShortcutAfterSync UEMRefreshTriggeredTaskAfterSync	To enable this setting, set the value to 1 for each item type you want to trigger a refresh. When enabled, SyncTool triggers a FlexEngine refresh if the synchronization results in updates for one or more of the selected item types: DirectFlex configuration, ADMX-based settings, drive mappings, environment variables, file type associations, Horizon Smart Policies, printer mappings, shortcuts, and triggered task settings.
Files to synchronize	FilesToSync	Use this setting to only synchronize the configuration files or the user-specific files. By default, SyncTool synchronizes both Flex configuration files and the user-specific profile archives, profile archive backups, and log files. Enter one of the following values: <ul style="list-style-type: none"> ■ 1 (synchronize Flex configuration files) ■ 2 (synchronize profile archives, profile archives backups, and log files)

Configuring Network Detection Settings in NoAD Mode

You can configure network detection settings for the SyncTool without using Active Directory.

Network detection settings allow you to use User Environment Manager files locally and synchronize only based on configurable network thresholds. You configure network detection settings in the NoAD.xml file.

Table 4. Network Detection Settings in NoAD Mode

Setting	XML Attribute	Description
Prefer IPv6 when resolving host names	PreferIPv6	To enable this setting, set the value to 1. Controls the behavior when a host name resolves to both IPv4 and IPv6. If you have not configured network thresholds, you do not need to configure this setting.
DFS namespace support	DFSNamespaceSupport	To enable this setting, set the value to 1. Enable this setting to perform the network measurements correctly when using DFS namespaces to store User Environment Manager files. If you have not configured network thresholds, you do not need to configure this setting.

Table 4. Network Detection Settings in NoAD Mode (Continued)

Setting	XML Attribute	Description
Network measurement settings	PingSize PingCount PingTimeout PingCache	<p>Control how network measurements are performed when network thresholds are configured. The ping cache setting controls how long network measurement results are retained, to prevent performing multiple measurements for User Environment Manager network paths that are hosted on the same server. If these settings are not configured, 3 pings are done of 2048 bytes with a timeout of 5 seconds. The default ping cache is 60 seconds. Set the following values:</p> <ul style="list-style-type: none"> ■ PingSize (specify in bytes) ■ PingCount (specify a numeric value) ■ PingTimeout (specify in seconds) ■ PingCache (specify in seconds) <p>If you have not configured network thresholds, you do not need to configure this setting.</p>
Network threshold: Bandwidth	MinimumBandwidth	The administrator specifies the minimum bandwidth that must be available for synchronization to occur. You can combine this setting with the latency threshold. Specify this value in kilobytes per second (kB/s).
Network threshold: Latency	MaximumLatency	The administrator specifies the maximum latency acceptable for synchronization to occur. You can combine this setting with the bandwidth threshold. Specify this value in milliseconds (ms).
Force synchronization at login	ForceSyncAtLogOn ForceConfigSyncAtLogOn ForceRepositorySyncAtLogOn ForceProfileArchiveSyncAtLogOn	<p>Overrides the behavior where synchronization does not occur when network thresholds do not meet the configured requirements during login. Use this setting to always synchronize all User Environment Manager files at login. If you want to synchronize only certain file types, also select one or more of the other options.</p> <p>To enable this setting, set the ForceSyncAtLogOn value to 1. For each type of synchronization, set the value to 1 to limit the items to synchronize:</p> <ul style="list-style-type: none"> ■ ForceConfigSyncAtLogOn ■ ForceRepositorySyncAtLogOn ■ ForceProfileArchiveSyncAtLogOn <p>If you have not configured network thresholds, you do not need to configure these settings.</p>

Table 4. Network Detection Settings in NoAD Mode (Continued)

Setting	XML Attribute	Description
Force synchronization at logout	ForceSyncAtLogOff ForceConfigSyncAtLogOff ForceRepositorySyncAtLogoff ForceProfileArchiveSyncAtLogOff	<p>Overrides the behavior where synchronization does not occur when network thresholds do not meet the configured requirements during logout.</p> <p>Enable Force sync at logout to always synchronize all User Environment Manager files at logout. If you want to synchronize only certain file types, also select one or more of the other options.</p> <p>To enable this setting, set the ForceSyncAtLogOff value to 1.</p> <p>For each type of synchronization, set the value to 1 to limit the items to synchronize:</p> <ul style="list-style-type: none"> ■ ForceConfigSyncAtLogOff ■ ForceRepositorySyncAtLogoff ■ ForceProfileArchiveSyncAtLogOff <p>If you have not configured network thresholds, you do not need to configure these settings.</p>
Force synchronization in resident mode	ForceSyncDuringSession ForceConfigSyncDuringSession ForceRepositorySyncDuringSession ForceProfileArchiveSyncDuringSession	<p>Overrides the behavior where synchronization does not occur when the network thresholds do not meet the configured requirements in resident mode.</p> <p>Enable Force sync in resident mode to always synchronize all User Environment Manager files during a session. If you want to synchronize only certain file types, also select one or more of the other options.</p> <p>To enable this setting, set the ForceSyncDuringSession value to 1.</p> <p>For each type of synchronization, set the value to 1 to limit the items to synchronize:</p> <ul style="list-style-type: none"> ■ ForceConfigSyncDuringSession ■ ForceRepositorySyncDuringSession ■ ForceProfileArchiveSyncDuringSession <p>If you have not configured network thresholds, you do not need to configure these settings.</p>

SyncTool Command-Line Arguments

SyncTool accepts command-line arguments to configure functions such as resident mode, one-time synchronization during a session, synchronization at logoff, and others.

- To start the SyncTool in the resident mode:

```
FlexSyncTool.exe -Resident [-Tray]
```

- To perform a one-time synchronization during a session:

```
FlexSyncTool.exe -SyncNow
                    [-SyncArchives] [-SyncFlexConfig] [-SyncFlexRepository]
                    [-ShowDialog]
```
- To synchronize at logoff: `FlexSyncTool.exe -Logoff [-ShowDialog]`
- Arguments:
 - `-Resident`. Starts SyncTool in resident mode.
 - `-Tray`. Shows tray icon, which provides access to the user interface.
 - `-Logoff`. Performs synchronization at logoff.
 - `-ShowDialog`. Shows the splash screen with progress information.
 - `-SyncNow`. Performs one-time synchronization.
- For `-SyncNow`, all three categories are synchronized by default. To be more specific, also specify one or more of the following optional arguments:
 - `-SyncArchives`
 - `-SyncFlexConfig`
 - `-SyncFlexRepository`

Running a One-Time Synchronization

To perform a one-time synchronization during a session, start the SyncTool executable at any time with the `-SyncNow` argument.

```
FlexSyncTool.exe -SyncNow [-SyncArchives] [-SyncFlexConfig] [-SyncFlexRepository] [-ShowDialog]
```

If SyncTool is running in resident mode when you launch `FlexSyncTool.exe` with the `-SyncNow` argument, the resident instance performs the actions as provided by the command-line arguments, and the `-ShowDialog` argument is ignored.

Group Policy Configuration on Computer OU

For advanced scenarios where you configure the SyncTool Group Policy settings on the computer level, an additional Administrative Template is provided, which contains almost all SyncTool Group Policy settings as Computer Configuration: VMware UEM SyncTool COMPUTER.admx.

You can use this Administrative Template to create a GPO that can be linked to an OU that contains computers.

If you configure SyncTool Group Policy settings on a computer level, you can have multiple SyncTool configurations for different OUs in Active Directory. This is useful if you want to configure different network thresholds for computers or locations where different types of network connections are available.

IMPORTANT SyncTool must always start in the user context.

Starting SyncTool in the user context means that even though you are able to configure most of the SyncTool Group Policy settings through Computer Configuration, the following settings must be applied using a GPO on the user level.

- Configure the Run VMware UEM SyncTool during logon group policy setting. See [“SyncTool Group Policy Reference,”](#) on page 12 for more information.
- Run SyncTool with the `-Logoff` argument using the Group Policy logoff script mechanism. See [“Run SyncTool at Logoff,”](#) on page 15.

- Configure a logon script that starts FlexEngine with the `-OfflineImport` argument as described in the *Installing and Configuring VMware User Environment Manager*.

Index

C

- command-line arguments **23**
- Computer OU **24**
- configuring SyncTool **10**
- create SyncTool GPO **11**
- create SyncTool Group Policy **11**

D

- deployment process **8**

F

- force synchronization **14**
- force synchronization NoAD **21**

G

- glossary **5**

I

- infrastructure requirements **8**
- install SyncTool **10**
- Install SyncTool **9**
- installing SyncTool **9**
- intended audience **5**
- introduction **5**
- introduction to the SynchTool **5**

L

- limited bandwidth scenario **10**

N

- network thresholds **14**
- network detection settings **14**
- network detection settings NoAD **21**
- network thresholds NoAD **21**

O

- offline scenario for SyncTool **10**
- one time synchronization **24**
- one time sync **24**

R

- resident mode **15**
- run at logoff **15**
- run SyncTool **15**
- run SyncTool at logoff **15**

- run SyncTool in resident mode **15**

S

- slow WAN scenario **10**
- start SyncTool **15**
- SychTool **5**
- SyncTool architecture **6**
- SyncTool components **6**
- SyncTool configuration **8**
- SyncTool deployment **6, 8**
- SyncTool implementation **8**
- SyncTool infrastructure **6**
- SyncTool command-line arguments **23**
- SyncTool configuration NoAD **17**
- SyncTool configuration settings **12**
- SyncTool GPO **11**
- SyncTool GPO reference **12**
- SyncTool GPO settings **12**
- SyncTool Group Policy **11**
- SyncTool Group Policy reference **12**
- SyncTool Group Policy settings **12**
- SyncTool infrastructure requirements **8**
- SyncTool installation process **8**
- SyncTool manual installation **9**
- SyncTool network detection settings **14**
- SyncTool network detection settings NoAD **21**
- SyncTool NoAD mode **17**
- SyncTool settings NoAD **17**
- SyncTool software requirements **9**
- SyncTool unattended installation **10**
- system requirements **8**

U

- User Environment Manager SynchTool **5**

