

Management Pack for Citrix Virtual Apps and Desktops

VMware vRealize True Visibility Suite 1.0

You can find the most up-to-date technical documentation on the VMware website at:

<https://docs.vmware.com/>

VMware, Inc.
3401 Hillview Ave.
Palo Alto, CA 94304
www.vmware.com

Copyright © 2023 VMware, Inc. All rights reserved. [Copyright and trademark information.](#)

Contents

- 1 Management Pack for Citrix Virtual Apps & Desktops 5**
- 2 System Requirements (Citrix Virtual Apps & Desktops) 6**
 - Session Latency Metrics Requirements (Citrix Virtual Apps & Desktops) 7
 - Adding an SSL Certificate to the vROps Truststore (Citrix Virtual Apps & Desktops) 9
- 3 Installing the Management Pack 11**
- 4 Upgrading the Management Pack (Citrix Virtual Apps & Desktops) 15**
- 5 Configuring the Management Pack (Citrix Virtual Apps & Desktops) 17**
 - Creating a Credential (Citrix Virtual Apps & Desktops) 17
 - Creating an Adapter Instance (Citrix Virtual Apps & Desktops) 19
 - Discovering Resources Manually (Citrix Virtual Apps & Desktops) 21
 - Configuring the Properties File (Citrix Virtual Apps & Desktops) 23
 - Validating Data Collection (Citrix Virtual Apps & Desktops) 25
- 6 Troubleshooting the Management Pack (Citrix Virtual Apps & Desktops) 26**
- 7 Using the Management Pack (Citrix Virtual Apps & Desktops) 28**
 - Resource Kinds and Relationships (Citrix Virtual Apps & Desktops) 28
 - Inventory Tree (Traversal Spec) (Citrix Virtual Apps & Desktops) 30
 - Dashboards (Citrix Virtual Apps & Desktops) 31
 - Citrix XenDesktop App and Desktop Details 32
 - Citrix XenDesktop Catalog Details 33
 - Citrix XenDesktop Delivery Group Details 33
 - Citrix XenDesktop Health Investigation 34
 - Citrix XenDesktop Overview 35
 - Citrix XenDesktop Site Details 36
 - Citrix XenDesktop Site Overview 37
 - Citrix XenDesktop VDA Machine Details 38
 - Citrix XenDesktop VDA VM Mashup 39
 - Citrix XenDesktop User Details 40
 - Tags (Citrix Virtual Apps & Desktops) 41
 - Views (Citrix Virtual Apps & Desktops) 42
 - Reports (Citrix Virtual Apps & Desktops) 44
 - Analysis Badges and Capacity Definitions (Citrix Virtual Apps & Desktops) 45
 - Alerts (Citrix Virtual Apps & Desktops) 47

Metrics (Citrix Virtual Apps & Desktops) 52

Management Pack for Citrix Virtual Apps & Desktops

1

The **VMware vRealize® True Visibility™ Management Pack for Citrix Virtual Apps & Desktops** is an embedded adapter for vRealize Operations (vROps), collecting performance data from your Citrix VDI environment and providing predictive analysis and real-time information about problems in your infrastructure--all within the vRealize Operations user interface.

How the Management Pack Collects Data

During each data collection cycle, the Management Pack queries the **OpenData (OData) API** via a **Site's Delivery Controller** domain to obtain data regarding XenDesktop resources.

Notable Features

The Management Pack harnesses powerful vRealize Operations features such as:

- **10 comprehensive monitoring dashboards**, including:
 - Citrix XenDesktop Health Investigation
 - Citrix XenDesktop App and Desktop Details
 - Citrix XenDesktop User Details
- **700+ collected metrics** for XenDesktop resources
- **Key performance metrics** such as load index summaries, connection summaries, connection failures, resource counts, and session logon durations
- **150+ detailed alerts and notifications**
- **Capacity definitions for vRealize Calculated session capacity and effective load index** for XenDesktop Catalog, Delivery Group, Hypervisor, Site, and VDA Machine

System Requirements (Citrix Virtual Apps & Desktops)

2

Before installing and configuring the Management Pack, ensure your system meets the following requirements.

For compatibility between products, please refer to:

[vRealize Operations Interoperability for Citrix Virtual Apps and Desktops](#)

-OR-

[Third Party Solution Interoperability for Citrix Virtual Apps and Desktops](#)

	Citrix XenDesktop/XenApp Requirements
Version(s)	Citrix XenDesktop 7.1+ (VDI, Enterprise, and Platinum) Citrix XenApp 7.5+ (Advanced, Enterprise, and Platinum)
Connection	Citrix Desktop Delivery Controller (DDC) server host name or IP address Ports: <ul style="list-style-type: none">■ 80 (TCP) <p>Important Access to PowerShell port 5985 (TCP) (HTTP) or port 5986 (TCP) (HTTPS) for WinRM is required for Session Latency metric (see Session Latency Metrics Requirements (Citrix Virtual Apps & Desktops))</p>
Credentials	Citrix Receiver User Name/Password <p>Important The user must be a Windows domain user that is defined as a XenApp/XenDesktop administrator in Citrix Studio. The user requires read-only privileges; however, the data returned is determined by XenApp/XenDesktop administrator roles and permissions. See also: Citrix Product Documentation's Delegated Administration topic.</p>

Important In order to collect Session Latency Metrics, you must configure WinRM on each VDA and DDC. See: [Session Latency Metrics Requirements \(Citrix Virtual Apps & Desktops\)](#) for more information.

This chapter includes the following topics:

- [Session Latency Metrics Requirements \(Citrix Virtual Apps & Desktops\)](#)

- [Adding an SSL Certificate to the vROps Truststore \(Citrix Virtual Apps & Desktops\)](#)

Session Latency Metrics Requirements (Citrix Virtual Apps & Desktops)

To collect session latency metrics and establish a MS SQL Server relationship, users must install a signed certificate and set up WinRM HTTPS **on each VDA and DDC** (XenDesktop Delivery Controller) as outlined in the following sub-topics.

Create a signed certificate for the system to be monitored

Note the following requirements for the certificate:

- The certificate can be **self-signed** or **signed by an authority**.
- If self-signed, vROps must be told to **ignore SSL verification**.
- The certificate **must include the private key** for the system.

Important If creating the certificate manually, the PFX format (which includes both a certificate and private key) is required by Windows.

Install the certificate on the target system

- 1 Open **mmc**.
- 2 Add Snap-in Certificates:
 - a Select **File > Add Snap-in**.
 - b Select **Certificates**.
 - c Select **Computer Account**.
 - d Select **Local computer**.
 - e Click **OK**.
- 3 Expand the certificates tree:
 - a Select **Personal/Certificates** (or just **Personal** if **/Certificates** does not exist).
 - b Right-click inside the directory and select:
 - 1 **All tasks > Import**.
 - 2 Locate your certificate, then click **OK**.

Install certificate authority certificate (Optional)

If the certificate installed above was signed by an authority, you will need to install a trusted authority certificate, provided by your authority.

- 1 Under the **Certificates (Local Computer)** snap-in, select **Trusted Root Certificates/Certificates**.
- 2 Right-click and select **All tasks > Import** to import a certificate.
- 3 Navigate to your certificate authority's provided certificate, then click **OK**.

Important Any system connecting to the target system with WinRM HTTPS will also need your root certificate authority's certificate.

Enable WinRM

- 1 Launch the Command Prompt as an Administrator (**NOTE**: Do not use PowerShell).
- 2 Execute the following command: `winrm quickconfig`

Important This will enable HTTP listening by default (using port 5985). The HTTP listener can be removed later.

- 3 Find your certificate thumbprint:
 - a Open the mmc snap-in and find your personal certificate.
 - b Double-click the certificate. On the details tab, find **Certificate Thumbprint**.
- 4 Create the HTTPS listener:
 - a Execute the following command:

```
winrm create winrm/config/Listener?Address=*&Transport=HTTPS @{Hostname="<YOUR_DNS_NAME>"; CertificateThumbprint="<COPIED_CERTIFICATE_THUMBPRINT>" }
```

Important **NOTE**: `YOUR_DNS_NAME` must match what the certificate specifies. The `COPIED_CERTIFICATE_THUMBPRINT` must match the thumbprint found in the previous step.

- 5 Verify that WinRM is using HTTPS:
 - a Execute the following command: `winrm enumerate winrm/config/listener`

Important The default port used is 5986 (HTTPS). The default HTTP port is 5985.

- 6 Delete HTTP listener (Optional):
 - a Execute the following command: `winrm delete winrm/config/Listener?Address=*&Transport=HTTP`

Reference: Commands to enable supported authentication mechanisms

Note the following commands can be used to enable the supported authentication mechanisms:

Basic

```
winrm set winrm/config/service/auth @{Basic="true"}
```

NTLM

```
winrm set winrm/config/service/auth @{Negotiate="true"}
```

Kerberos

```
winrm set winrm/config/service/auth @{Kerberos="true"}
```

Adding an SSL Certificate to the vROps Truststore (Citrix Virtual Apps & Desktops)

When [Creating an Adapter Instance \(Citrix Virtual Apps & Desktops\)](#), different levels of security can be configured. The least secure configuration is to set the **SSL Configuration** field in the Advanced Settings to No SSL (SSL disabled). The next level is to keep the default setting of **No Verify**, in which SSL is enabled, but the Management Pack will accept all SSL certificates. For **added security**, you can select **Verify** and add your SSL certificate to the vROps truststore as outlined below.

To add an SSL certificate to your vROps truststore:

- 1 Obtain the SSL certificate for your XenDesktop host server from your Internet browser. Export the certificate as an **X.509 Certificate (PEM)**.
- 2 Copy the certificate to your vROps machine.
- 3 Use 'ssh' to log in to the vROps machine as the root user, then run the following command:

Linux:

```
$VCOPS_BASE/jre/bin/keytool -import -alias <product_alias> -file /tmp/<certfile>
-keystore "$VCOPS_DATA_VCOPS/user/conf/ssl/tcserver.truststore" -storepass
`grep ssltruststorePassword /storage/vcops/user/conf/ssl/storePass.properties | sed s/
ssltruststorePassword=//` -trustcacerts
```

Windows:

```
%VCOPS_BASE%\jre\bin\keytool -import -alias <product_alias> C:\path\to\certfile
-keystore "%VCOPS_DATA_VCOPS%\user\conf\ssl\tcserver.truststore" -storepass
<truststore_password> -trustcacerts
```

Parameter Descriptions:

- <product_alias> is a unique name for each key that you add (per host)
- <certfile> is the location where the cert file was saved

- 4 Run the reboot command to re-start the vROps machine for the changes to take effect.

Installing the Management Pack

3

The management packs consist of a PAK file that contains default dashboards for the objects that the management pack identifies. After installation, configure the management pack.

Prerequisites

All management packs are available in the [VMware Marketplace](#). For information on compatibility between products, see [VMware Product Interoperability Matrix](#).

- Download the PAK file from [VMware Marketplace](#).
- Save that PAK file to a temporary folder on your local system.
- Before you install the PAK file or upgrade your instance, clone any customized content to preserve it. Customized content can include alert definitions, symptom definitions, recommendations, and views.

Procedure

- 1 Log in to the user interface with administrator privileges.
- 2 In the menu, select **Data Sources**, and in the left pane select **Integrations > Repository**.
- 3 On the **Repository** tab, click **Add**.

The Add Solution wizard opens. The wizard includes three pages where you locate and upload a PAK file, accept the EULA and install, and review the installation.

Add Solution

- 1 Select Solution
- 2 End User License Agreement
- 3 Install

Select a Solution to Install

?

×

Browse your file system to select a PAK file for the solution you want to install.

Select a PAK file to import BROWSE...

Install the PAK file even if it is already installed.

Reset Default Content, overwriting to a newer version provided by this update. User modifications to DEFAULT Alert Definitions, Symptoms, Recommendations, Policy Definitions, Views, Dashboards, Widgets and Reports will be overwritten. If you are installing a product software update, clone or backup the content before you proceed.

UPLOAD 0%

4 Click **Browse** to locate the temporary folder and select the PAK file you downloaded.

5 (Optional) To upgrade to the latest version of the management pack:

- a Select the **Install the PAK file even if it is already installed** checkbox to upgrade the management pack using the current PAK file even if an older version of the PAK file is already uploaded.

Do not overwrite or update the solution alerts, symptoms, recommendations, and policies and leave all user customizations in place.

- b Select the **Reset Default Content, overwriting to a newer version provided by this update. User modifications to DEFAULT Alert Definitions, Symptoms, Recommendations, Policy Definitions, Views, Dashboards, Widgets, and Reports will be overwritten. If you are installing a product software update, clone or backup the content before you proceed** check box to upgrade the management pack using the current PAK file and overwrite the solution default alerts, symptoms, recommendations, and policies with the newer versions provided with the current PAK file.

Note A reset overwrites customized content. Clone your customized content before the upgrade.

6 (Optional) A warning, *The PAK file is unsigned* appears if the PAK file is not signed with a digital signature that VMware provides. The digital signature indicates the original developer or publisher and provides the authenticity of the management pack.

If installing a PAK file from an untrusted source is a concern, check with the management pack distributor before proceeding with the installation.

7 Click **Upload**. The upload might take several minutes.

8 Read and accept the EULA, and click **Next**. Installation details appear in the window during the process.

Note The installation starts only if all the cluster's nodes are accessible.

9 Review the installation progress, including the nodes where the adapter was installed. When the installation is complete, click **Finish**.

10 In the menu, select **Data Sources**, and in the left pane select **Integrations > Accounts**.

11 On the Accounts tab, click **Add Account**.

12 On the Accounts Types page, click the management pack you have installed.

13 Enter a display name and description for the cloud account.

- a Enter the **Name** for the management pack instance as you want it to appear in .
- b Enter the **Description**. for the management packs with any additional information that helps you manage your instances.

- 14 Select the **Credential** you want to use to sign on to the environment from the drop-down menu. To add new credentials to access the management pack, click the plus sign and create a new credential.
- 15 Enter **Collector/Group** to manage the management pack on . If you have only one account, select **Default collector group**.
- 16 Enter the connection information as required to configure the instance of the management pack.

Each management pack has unique settings, configure the settings as prompted to configure that instance of the management pack. For more information on individual management packs, see [List of Management Packs](#).
- 17 Click **VALIDATE CONNECTION** to initiate the authentication request to the CSP authentication service.
- 18 (Optional) Configure the **Advanced Settings** for the management pack.
- 19 Click **ADD**.

What to do next

Verify that the adapter is configured and collecting data by viewing application-related data.

Upgrading the Management Pack (Citrix Virtual Apps & Desktops)


4

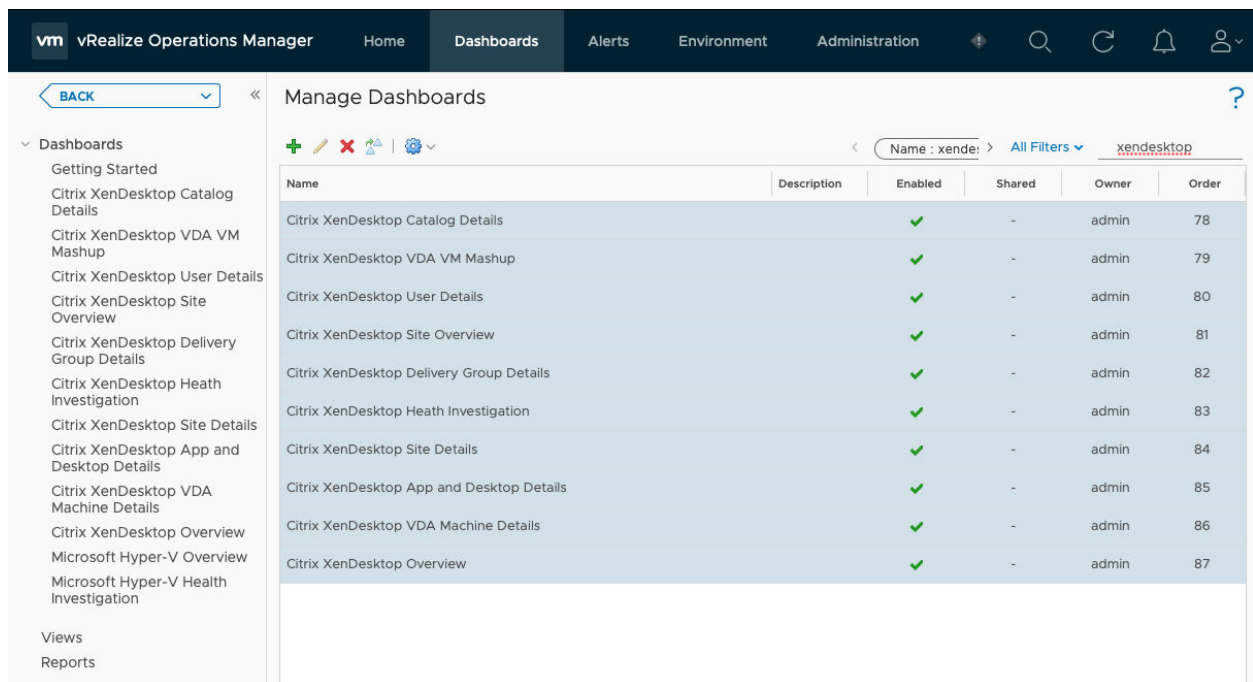
When upgrading to a newer version of the Management Pack, we recommend the following tasks.

Delete existing XenDesktop dashboards

If you do not remove the dashboards from a previous version of the Management Pack before installing the new version, you will see duplicate XenDesktop dashboards in the **Dashboard List** drop-down menu after upgrading.

To remove existing Management Pack dashboards:

- 1 Navigate to **Dashboards > Actions > Manage Dashboards**.
- 2 Enter **XenDesktop** in the search field on the right.
- 3 Multi-select all Citrix XenDesktop dashboards.
- 4 Click **Delete Dashboard** .
- 5 Click **Yes** when the confirmation dialog box appears to delete the selected dashboards.






Name	Description	Enabled	Shared	Owner	Order
Citrix XenDesktop Catalog Details		✓	-	admin	78
Citrix XenDesktop VDA VM Mashup		✓	-	admin	79
Citrix XenDesktop User Details		✓	-	admin	80
Citrix XenDesktop Site Overview		✓	-	admin	81
Citrix XenDesktop Delivery Group Details		✓	-	admin	82
Citrix XenDesktop Health Investigation		✓	-	admin	83
Citrix XenDesktop Site Details		✓	-	admin	84
Citrix XenDesktop App and Desktop Details		✓	-	admin	85
Citrix XenDesktop VDA Machine Details		✓	-	admin	86
Citrix XenDesktop Overview		✓	-	admin	87

Delete existing adapter instance(s) and objects

You must also remove previous adapter instance(s) and their related objects, as the old instance(s) will not collect data and creating new instances makes new related objects instead of using existing objects.

After deleting existing dashboards and installing the new version of the Management Pack, remove the previous adapter instance(s) and their related objects, then configure the new adapter instance(s).

To remove existing Management Pack adapter instance(s) and objects:

- 1 Click the **Administration**  icon. The Solutions view should automatically open.
- 2 Select **Citrix XenDesktop** from the Solutions list.
- 3 Click the **Configure**  icon . The Manage Solution window will appear.
- 4 Select an instance from the list on the left, then click the **Delete**  icon.
- 5 Select the **Remove related objects** checkbox in the dialog that appears, then click **Yes**.

What to do next

[Chapter 3 Installing the Management Pack](#)

[Chapter 5 Configuring the Management Pack \(Citrix Virtual Apps & Desktops\)](#)

Configuring the Management Pack (Citrix Virtual Apps & Desktops)

5

Configuring the Management Pack for Citrix XenDesktop in vRealize Operations includes the following required tasks:

- [Creating a Credential \(Citrix Virtual Apps & Desktops\)](#)
- [Creating an Adapter Instance \(Citrix Virtual Apps & Desktops\)](#)

Note In addition, you may want to perform one or more of the following optional tasks to further configure the Management Pack for your specific needs:

- [Configuring the Properties File \(Citrix Virtual Apps & Desktops\) \(optional\)](#)
 - [Validating Data Collection \(Citrix Virtual Apps & Desktops\) \(optional\)](#)
-

This chapter includes the following topics:

- [Creating a Credential \(Citrix Virtual Apps & Desktops\)](#)
- [Creating an Adapter Instance \(Citrix Virtual Apps & Desktops\)](#)
- [Discovering Resources Manually \(Citrix Virtual Apps & Desktops\)](#)
- [Configuring the Properties File \(Citrix Virtual Apps & Desktops\)](#)
- [Validating Data Collection \(Citrix Virtual Apps & Desktops\)](#)

Creating a Credential (Citrix Virtual Apps & Desktops)

One of the required configuration tasks for this Management Pack is to create a set of credentials in vROps.

Prerequisites

- [Chapter 3 Installing the Management Pack](#)

Procedure

- 1 Log in to vRealize Operations as an admin user.
- 2 Click on **Administration**. In the left panel, click **Management > Credentials**.

- 3 Click the **Add+** icon. In the Manage Credential window that appears, select the appropriate credential kind, then enter the following information:

The screenshot shows a 'Manage Credential' dialog box with the following fields and values:

- Adapter Type:** Citrix XenDesktop
- Credential Kind:** Citrix XenDesktop Credentials
- Credential name:** (empty)
- OData User Name:** (empty)
- OData Password:** (empty)
- OData Domain:** (empty)
- PowerShell User Name (Optional):** (empty)
- PowerShell Password (Optional):** (empty)
- PowerShell Domain (Optional):** (empty)

Buttons: CANCEL, OK

- **Credential name:** A name for this set of credentials
- **OData User Name:** Your OData user name
- **OData Password:** The password associated with your OData user name
- **OData Domain:** The domain associated with your OData user name
- **PowerShell User Name:** Only applicable to Windows PowerShell users
- **PowerShell Password:** Only applicable to Windows PowerShell users
- **PowerShell Domain:** Only applicable to Windows PowerShell users

- 4 Click **OK** to save your credential.

What to do next

[Creating an Adapter Instance \(Citrix Virtual Apps & Desktops\)](#)

Creating an Adapter Instance (Citrix Virtual Apps & Desktops)

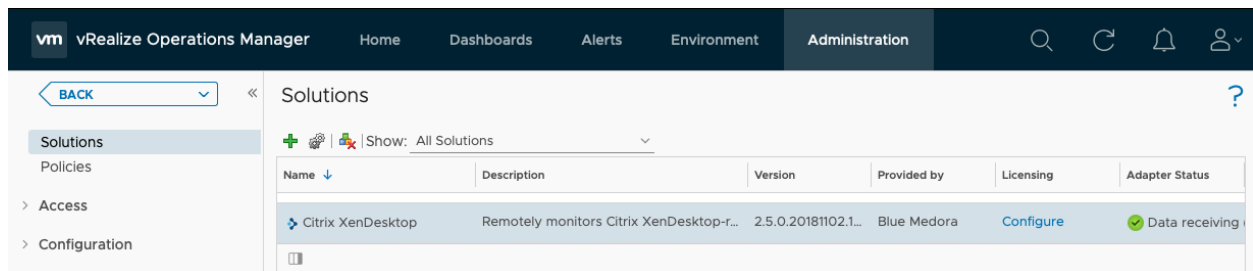
Before you can begin using the Management Pack, you must create an adapter instance to identify the host from which the Management Pack will retrieve data.

Prerequisite


- [Chapter 3 Installing the Management Pack](#)
- [Creating a Credential \(Citrix Virtual Apps & Desktops\)](#)

Procedure

- 1 Log in to vRealize Operations as an admin user.
- 2 Click **Administration**. In the right panel, the **Solutions** view will be displayed.
- 3 Select **Citrix XenDesktop** from the Solutions list.



- 1 Click the **Configure**  icon. The Manage Solution window will appear.

Important If your environment is configured to support multiple Sites, and they are monitored by vRealize Operations, you must create an adapter instance for each individual Site. Click the **Add**  icon above the **Instance Name** list on the left to create additional adapter instances.

Manage Solution - Citrix XenDesktop

? X

Adapter Type	Description	Instances	Version	Provided by	Reset Default Content
Citrix XenDesktop		1	2.5.0.201811...	Blue Medora	

+ X Filter

Instance Name ↑

v7.15 Distributed IPv4

Instance Settings

Display Name

Description

Basic Settings

Delivery Controller

Credential x v +

TEST CONNECTION

▼ Advanced Settings

Collectors/Groups	<input type="text" value="vRealize Operations Manag"/> i
PowerShell Port	<input type="text" value="5985"/> v
SSL Configuration	<input type="text" value="No SSL"/> v
PowerShell Authentication Mechanism	<input type="text" value="NTLM"/> v
Support Autodiscovery	<input type="text" value="True"/> v

SAVE SETTINGS

CLOSE

1 In the **Manage Solution** window, enter the following information:

a **Adapter Settings:**

- **Display Name:** A name for this particular instance of the Management Pack
- **Description:** Optional, but it can be helpful to describe multiple instances of the Management Pack

b **Basic Settings:**

- **Delivery Controller:** Host name or IP address of your XenDesktop Delivery Controller's domain
- **Credential:** Select the credential you created when [Creating a Credential \(Citrix Virtual Apps & Desktops\)](#).

c **Advanced Settings:**

- **Collector(s)/Groups:** Default Collector/Group is automatically selected. Click the drop-down menu if you want to run the collection on a different node.
- **PowerShell Port:** Default port is **5986** (HTTPS); specify **5985** for HTTP.

- **SSL Configuration:** Options are **No Verify** (default value; SSL enabled/certificate not verified), **No SSL** (SSL disabled), and **Verify** (SSL enabled/certificate verified). If you select **Verify**, complete the following task: [Adding an SSL Certificate to the vROps Truststore](#).
- **PowerShell Authentication Mechanism:** If using Windows PowerShell, select your authentication type: **Basic**, **Kerberos**, or **NTLM**.
- **Support Autodiscovery:** When you enable autodiscovery (default), the Management Pack creates resources and relationships in vROps, then collects data for the discovered resources after the main collection query runs. If you select **False**, you must manually discover resources. See: [Discovering Resources Manually \(Citrix Virtual Apps & Desktops\)](#).

Important The collection interval for the adapter instance resource determines how often the Management Pack collects data. The default collection interval is five minutes. For information about changing the collection interval, see: [Configuring the Properties File \(Citrix Virtual Apps & Desktops\)](#).

- 2 Click **Test Connection** to test the configured connection information. Click **Save Settings** and **Close** to save your adapter instance.

What to do next

- If you set the **Support Autodiscovery** setting to **False**, see: [Discovering Resources Manually \(Citrix Virtual Apps & Desktops\)](#).
- To specify additional properties such as **Relationship Sync Interval** and **Max Number of Events to Return Per Collection**, see: [Configuring the Properties File \(Citrix Virtual Apps & Desktops\)](#).
- To validate data collection, see: [Validating Data Collection \(Citrix Virtual Apps & Desktops\)](#).


Discovering Resources Manually (Citrix Virtual Apps & Desktops)

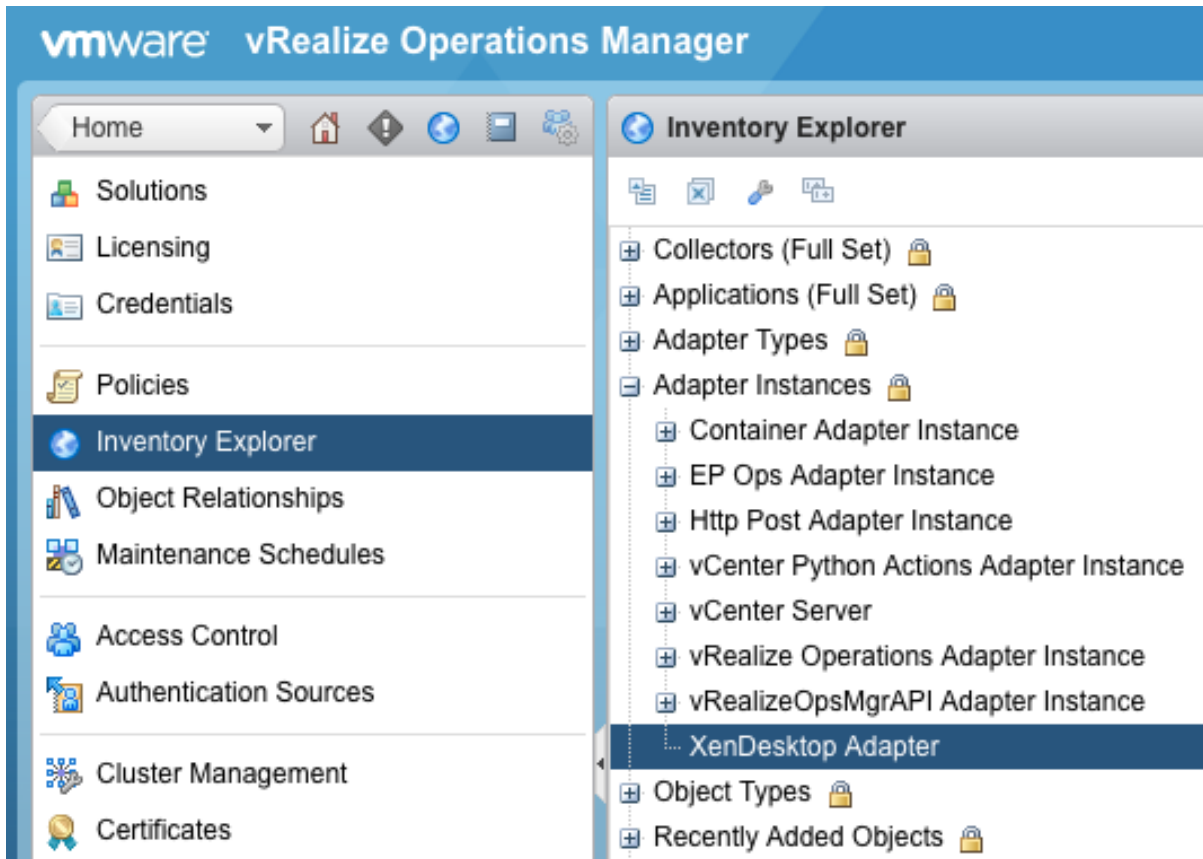
If you disabled autodiscovery when [Creating an Adapter Instance \(Citrix Virtual Apps & Desktops\)](#), you will need to manually discover resources as outlined below.


Prerequisite

- [Chapter 3 Installing the Management Pack](#)
- [Creating a Credential \(Citrix Virtual Apps & Desktops\)](#)
- [Creating an Adapter Instance \(Citrix Virtual Apps & Desktops\)](#)

Procedure

- 1 Click the **Administration**  icon. In the right panel, select **Inventory Explorer**.
- 2 Under Adapter Instances, select **XenDesktop Adapter**.



- 1 Click the **Discover Resources**  icon. The **Discover Objects** window will appear.
- 2 In the **Discover Objects** window, select the following information:
 - **Collector:** Unless you added additional collectors, the only available collector is your vROps server
 - **Adapter Type:** Citrix XenDesktop
 - **Adapter Instance:** The name of the adapter instance you assigned when [Creating an Adapter Instance \(Citrix Virtual Apps & Desktops\)](#)
 - **Discovery Info:** Citrix XenDesktop Discovery
 - **Only New Objects:** Select if you want only new objects to be discovered

Discover Objects ? X

Collector vRealize Operations Manager Collector-vRealize CI ▼

Adapter Type Citrix XenDesktop ▼

Adapter Instance xd-ddc-1 ▼


Discovery Info Citrix XenDesktop Discovery ▼

Only New Objects

OK Cancel

- 3 Click **OK** to start the manual discovery process. The process can take up to several minutes. When it is complete, the Discovery Results window lists the discovered resources.
- 4 Select each resource kind that contains resources you want to add, then choose one of the following options:
 - **Import:** Import the resource(s), but do not start collecting data. Resources appear in the resource list as Not Collecting. Data is stored, but analysis is not performed.
 - **Collect:** Import the resource(s), and start collecting data. When you select the Collect checkbox, the Import checkbox is also selected.
- 5 Click **OK**. The Discovery Results window closes and the new resources appear.

What to do next

- If you did not select the option to start metric collection when you defined a resource, you can start metric collection after the resource is defined. To start collecting metrics for a resource, choose the resources, then click the **Start Collecting**  icon.
- To specify properties such as **Relationship Sync Interval** and **Max Number of Events to Return Per Collection**, see: [Configuring the Properties File \(Citrix Virtual Apps & Desktops\)](#).
- To validate data collection, see: [Validating Data Collection \(Citrix Virtual Apps & Desktops\)](#).

Configuring the Properties File (Citrix Virtual Apps & Desktops)

You may want to further customize your adapter instance configuration using the `xendesktop.properties` file.

Prerequisite

- [Chapter 3 Installing the Management Pack](#)
- [Creating a Credential \(Citrix Virtual Apps & Desktops\)](#)

■ Creating an Adapter Instance (Citrix Virtual Apps & Desktops)

Properties

The following additional configuration settings can be found in the `xendesktop.properties` file located in the `$VCOPS_BASE/user/plugins/inbound/xendesktop_adapter/conf/` folder. You can modify the entries in the file, and they will be read in during the next collection.

Property	Description	Default Value
<code>create_relationship_between_applications_or_desktops_and_machines_in_the_same_delivery_group</code>	The Citrix XenDesktop platform does not create a relationship between Applications and Machines within the OData model, but this visual convenience is added when the property is set to true (default).	true
<code>relationship_sync_interval</code>	Because many resource relationships tend to slow down vROps, you can opt to specify the number of collections to pass before calculating and returning relationships during a collect cycle (i.e., collect relationships less often).	10
<code>parallelize_odata_calls</code>	Allows for a quicker return on data calls	true
<code>odata_call_thread_pool_size</code>	Specifies the number of threads concurrently performing OData calls	12
<code>timeout_for_<parameter>_in_seconds</code>	Allows for adjusting acceptable times to return an OData result, or when the data calls should timeout, in seconds. When values are not specified, the calls are limited to whatever the collection interval is set to for the adapter instance resource. Example: if you want to limit the Applications call to 10 seconds, it would appear as: <code>timeout_for_applications_in_seconds=10</code>	blank
<code>maximum_number_of_events_to_return_per_collection</code>	Used to specify the maximum number of events to return during each collect cycle	blank (returns all events)

What to do next

- If you set the Support Autodiscovery setting to False, see: [Discovering Resources Manually \(Citrix Virtual Apps & Desktops\)](#).
- To validate data collection, see: [Validating Data Collection \(Citrix Virtual Apps & Desktops\)](#).

Validating Data Collection (Citrix Virtual Apps & Desktops)

After you add an adapter instance, you will most likely want to validate the data that it collects in vROps.

Prerequisites

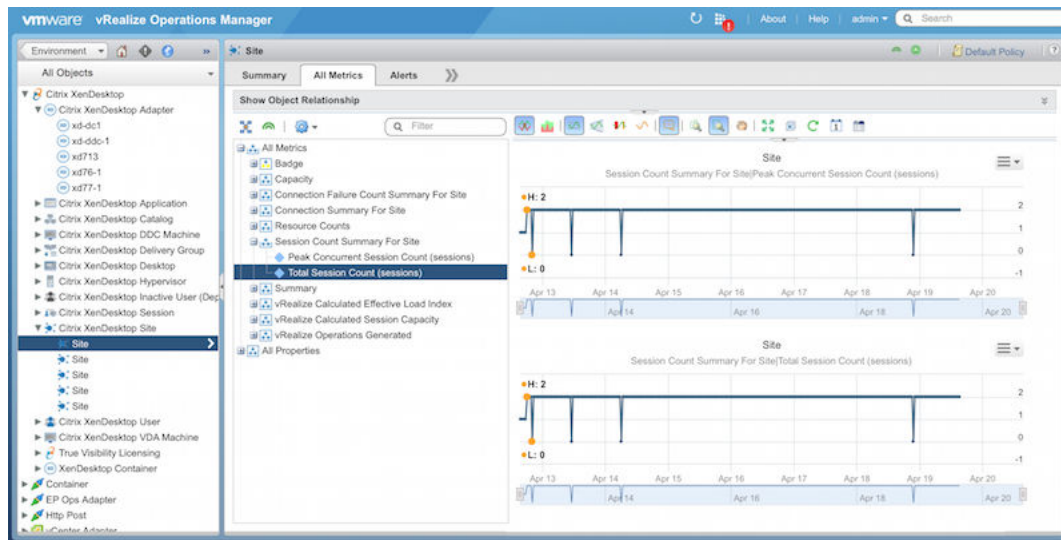
- [Chapter 3 Installing the Management Pack](#)
- [Creating a Credential \(Citrix Virtual Apps & Desktops\)](#)
- [Creating an Adapter Instance \(Citrix Virtual Apps & Desktops\)](#)

Important If you enabled Autodiscovery for the adapter instance, it will create resources as soon as it begins collecting metrics. If you disabled Autodiscovery for the adapter instance, you must go back and discover resources manually before you can validate data collection. See: [Discovering Resources Manually \(Citrix Virtual Apps & Desktops\)](#).

Procedure

- 1 Select **Environment**, on the top right.
- 2 Select **All Objects**, then expand the **Citrix XenDesktop** objects list.
- 3 Select a resource from the list, then click the **All Metrics** tab to select metrics and validate values against the data source.

Results



What to do next

- To learn more about using the Management Pack, see: [Chapter 7 Using the Management Pack \(Citrix Virtual Apps & Desktops\)](#).

Troubleshooting the Management Pack (Citrix Virtual Apps & Desktops)

6

Once you have finished [Chapter 3 Installing the Management Pack](#) and [Chapter 5 Configuring the Management Pack \(Citrix Virtual Apps & Desktops\)](#), check the **Collection State** and **Collection Status** for the adapter instance on the **Solutions** page. If they show as **Not Collecting** or **No Data Receiving**, respectively, the following troubleshooting topics can help you diagnose and correct common problems with your adapter instance.

Test Connection Errors

When [Creating an Adapter Instance \(Citrix Virtual Apps & Desktops\)](#), click **Test Connection** after entering all of your configuration settings to ensure vROps can connect to the specified host.

The following errors are possible:

Bad OData Domain, Username, or Password

Error Message: Unable to establish a valid connection to the target system. Failed to test adapter: argument type mismatch.

Description: The specified OData domain, username, or password is incorrect.

Bad Windows PowerShell Domain, Username, or Password

Error Message: Unable to establish a valid connection to the target system. Wait for response of task 'Test connection' is timed out for collector 'vRealize Operations Manager Collector-vRealize Cluster Node'.

Description: The specified PowerShell domain, username, or password is incorrect.

Bad Hostname

Error Message: Unable to establish a valid connection to the target system. java.net.UnknownHostException: some_system: unknown error.


Description: Cannot connect to the specified hostname.

Adapter and Collector Log Files

You can review XenDesktop Adapter errors in the adapter and collector log files, which can be viewed in the vROps UI or in an external log viewer.

- **Adapter log files** are located in the `$VCOPS_BASE/user/log/adapters/XenDesktopAdapter/` folder.
- **Collector log files** are located in the `$VCOPS_BASE/user/log/` folder.

To set the base log level for the collector in vROps:

- 1 Navigate to **Administration > Logs**.
- 2 Expand the **MASTER** folder, then select the **COLLECTOR** folder.
- 3 Click the **Edit Properties**  icon.
- 4 In the **Root logger level** drop-down menu, select the desired option.
 - The default logging level is **warning**.
 - To troubleshoot issues, set the logging level to **info**.
 - To view detailed messages, including micro steps, queries, and returned results, set the logging level to **debug**.

Caution If you set the logging level to **debug**, log files can become large very quickly. Set the logging level to **debug** only for short periods of time.

For more information about viewing log files and modifying levels, refer to the vROps online help.

Using the Management Pack (Citrix Virtual Apps & Desktops)

7

The Management Pack for Citrix Virtual Apps & Desktops includes the following out-of-the-box features, harnessing the power of the vRealize Operations user interface:

- Resource Kinds and Relationships (Citrix Virtual Apps & Desktops)
- Inventory Tree (Traversal Spec) (Citrix Virtual Apps & Desktops)
- Dashboards (Citrix Virtual Apps & Desktops)
- Tags (Citrix Virtual Apps & Desktops)
- Views (Citrix Virtual Apps & Desktops)
- Reports (Citrix Virtual Apps & Desktops)
- Analysis Badges and Capacity Definitions (Citrix Virtual Apps & Desktops)
- Alerts (Citrix Virtual Apps & Desktops)
- Metrics (Citrix Virtual Apps & Desktops)

This chapter includes the following topics:

- Resource Kinds and Relationships (Citrix Virtual Apps & Desktops)
- Inventory Tree (Traversal Spec) (Citrix Virtual Apps & Desktops)
- Dashboards (Citrix Virtual Apps & Desktops)
- Tags (Citrix Virtual Apps & Desktops)
- Views (Citrix Virtual Apps & Desktops)
- Reports (Citrix Virtual Apps & Desktops)
- Analysis Badges and Capacity Definitions (Citrix Virtual Apps & Desktops)
- Alerts (Citrix Virtual Apps & Desktops)
- Metrics (Citrix Virtual Apps & Desktops)

Resource Kinds and Relationships (Citrix Virtual Apps & Desktops)

The Management Pack for Citrix Virtual Apps & Desktops creates **Resource Kinds** and **Relationships** (associations) for critical resources in your Citrix VDI environment.

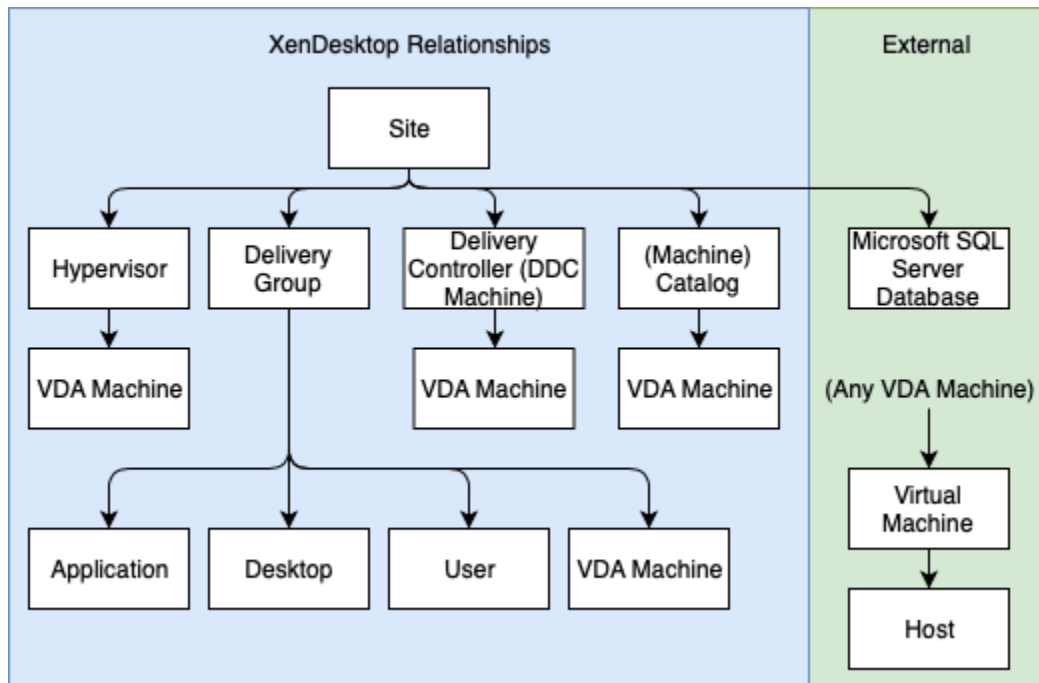
Resource Kinds

Performance, health, availability, and capacity data are collected for the following XenDesktop resource kinds:

- Citrix XenDesktop Site
- Citrix XenDesktop Delivery Group
- Citrix XenDesktop Machine Catalog
- Citrix XenDesktop Hypervisor
- Citrix XenDesktop Delivery Controller (DDC Machine)
- Citrix XenDesktop VDA Machine
- Citrix XenDesktop Application
- Citrix XenDesktop Desktop
- Citrix XenDesktop User

Relationships

Relationships among discovered resources are also created by the Management Pack. The hierarchical structure of those relationships is depicted in the diagram below.



External Relationships

The Management Pack can also discover external relationships for VMware Virtual Machines as well as customers who are using the Management Pack for Microsoft SQL Server.

- Citrix XenDesktop Site > Microsoft SQL Server Database
- Citrix XenDesktop VDA Machine > Virtual Machine

See also:

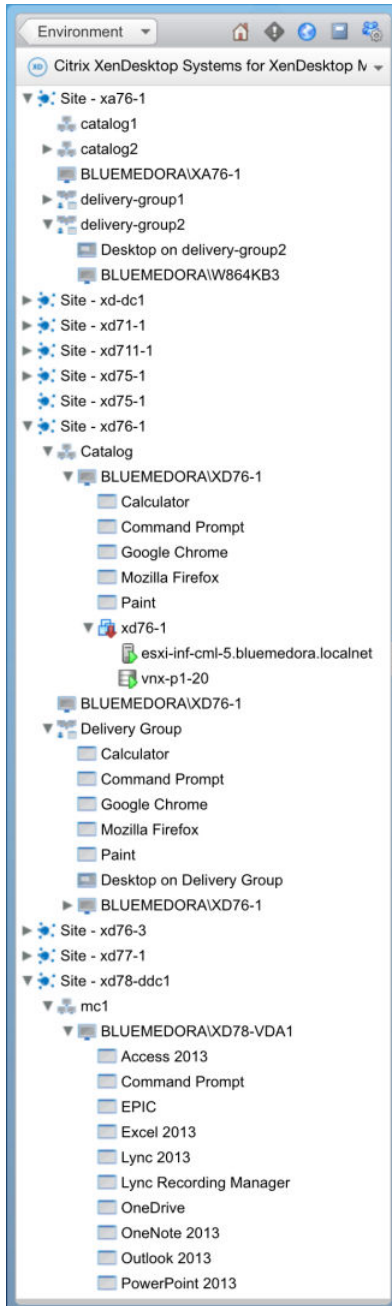
[Inventory Tree \(Traversal Spec\) \(Citrix Virtual Apps & Desktops\)](#)

Inventory Tree (Traversal Spec) (Citrix Virtual Apps & Desktops)

The Inventory Tree (Traversal Spec) feature in vROps allows you to easily navigate your Citrix VDI environment. The hierarchical structure implicitly shows relationships among resources and enables quick drill-downs to root-cause issues.

To access your Citrix XenDesktop Inventory Tree, navigate to **Home > Environment > Inventory Trees**.

Example Inventory Tree - Citrix XenDesktop



Dashboards (Citrix Virtual Apps & Desktops)

Dashboards are the primary feature for monitoring and troubleshooting Citrix VDI data problems from within vRealize Operations.

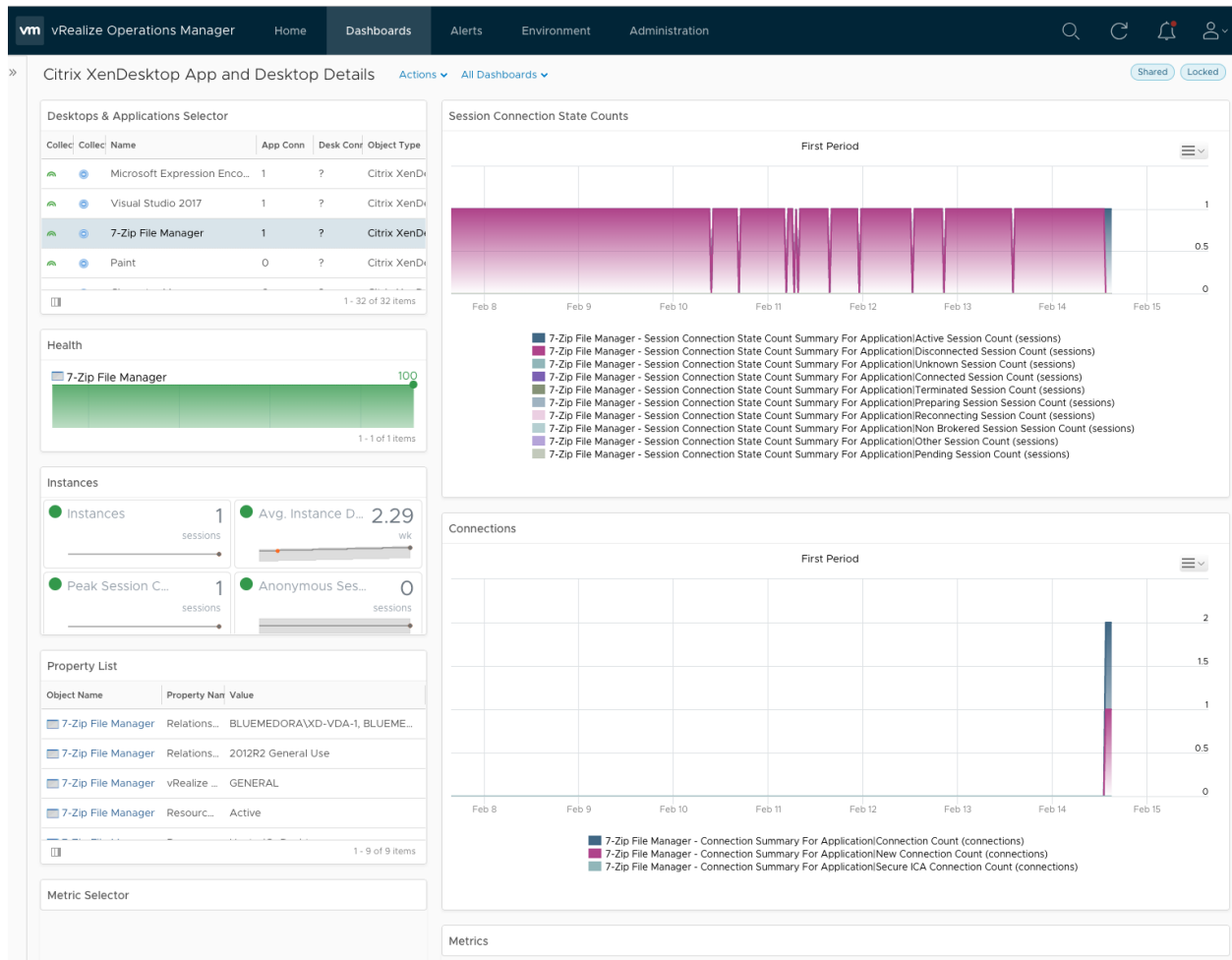
The following dashboards are included in the Management Pack for Citrix Virtual Apps & Desktops:

- [Citrix XenDesktop Overview](#)
- [Citrix XenDesktop App and Desktop Details](#)

- Citrix XenDesktop Catalog Details
- Citrix XenDesktop Delivery Group Details
- Citrix XenDesktop Health Investigation
- Citrix XenDesktop Site Details
- Citrix XenDesktop Site Overview
- Citrix XenDesktop User Details
- Citrix XenDesktop VDA Machine Details
- Citrix XenDesktop VDA VM Mashup

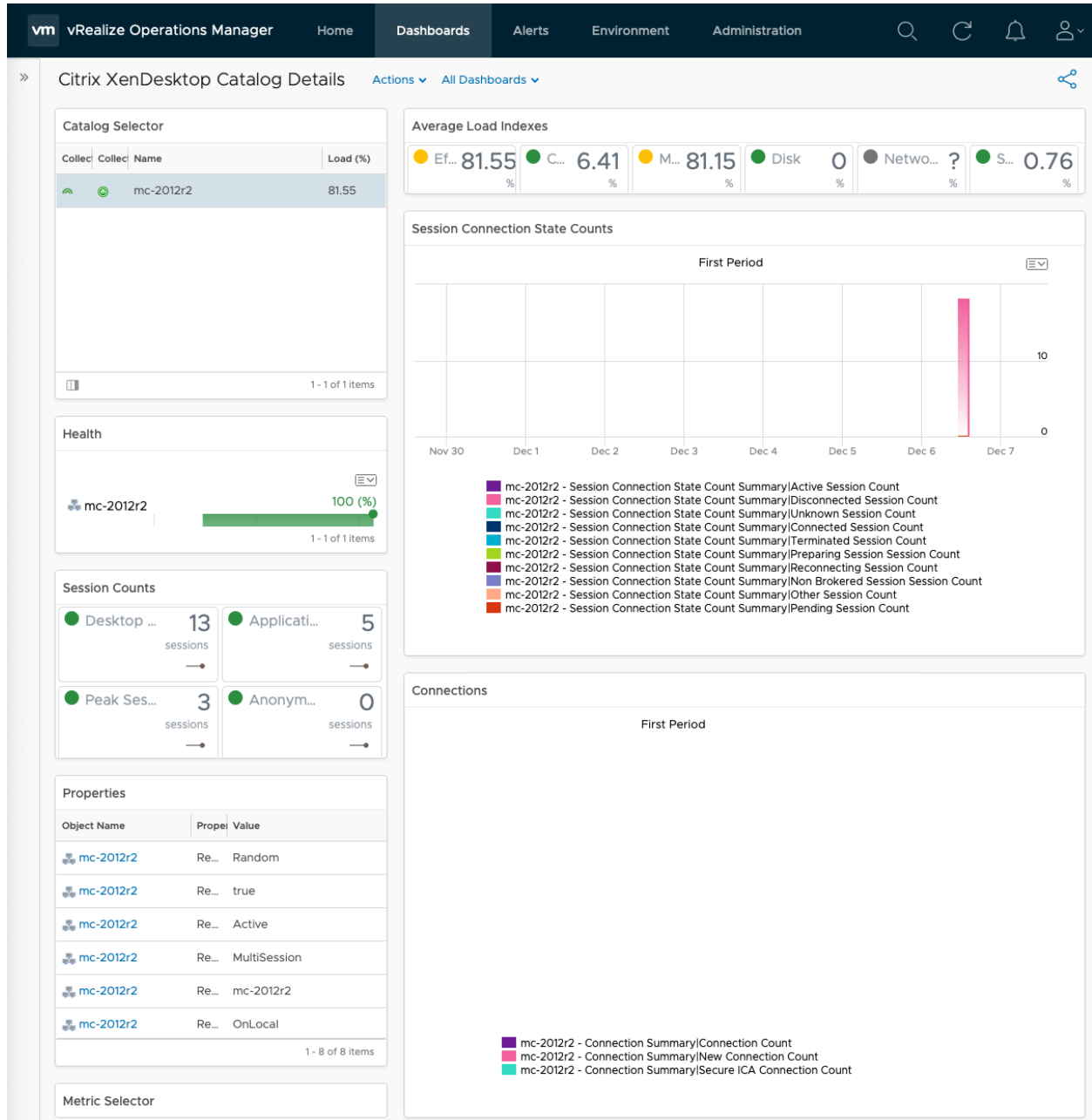
Citrix XenDesktop App and Desktop Details

The **Citrix XenDesktop App and Desktop Details** dashboard provides details and KPIs about applications and desktop instances in your Citrix VDI environment. Select a desktop or application from the widget on the left to view its health and properties as well as summaries of its instances, session connection state counts, and connections.



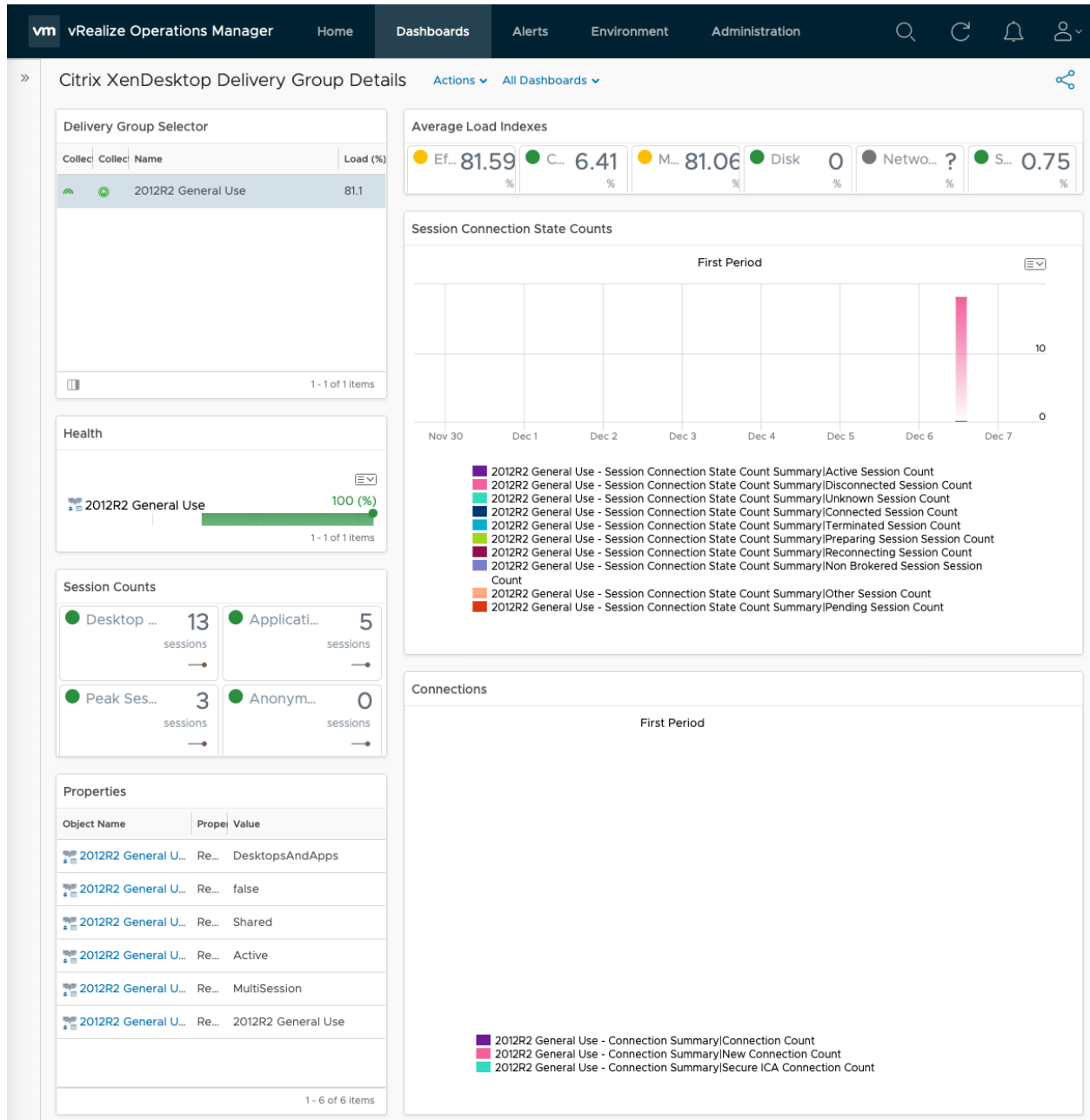
Citrix XenDesktop Catalog Details

The **Citrix XenDesktop Catalog Details** dashboard provides details and KPIs about each catalog resource. Select a catalog from the widget on the left to view its health and properties as well as summaries of its average load indexes, session counts, session connection state counts, and connections.



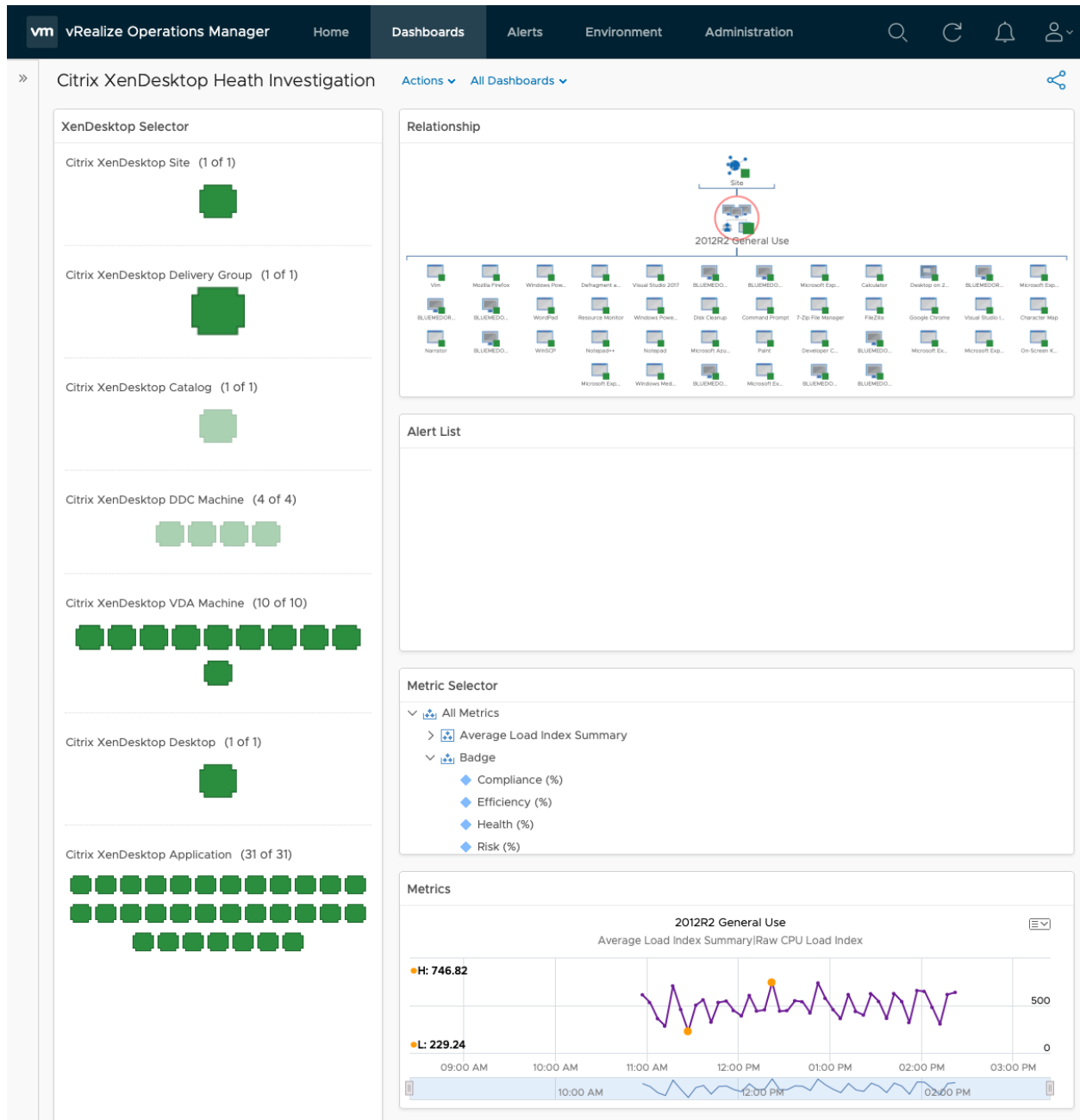
Citrix XenDesktop Delivery Group Details

The **Citrix XenDesktop Delivery Group Details** dashboard provides details and KPIs about each delivery group resource. Select a delivery group from the widget on the left to view its health and properties as well as summaries of its average load indexes, session counts, session connection state counts, and connections.



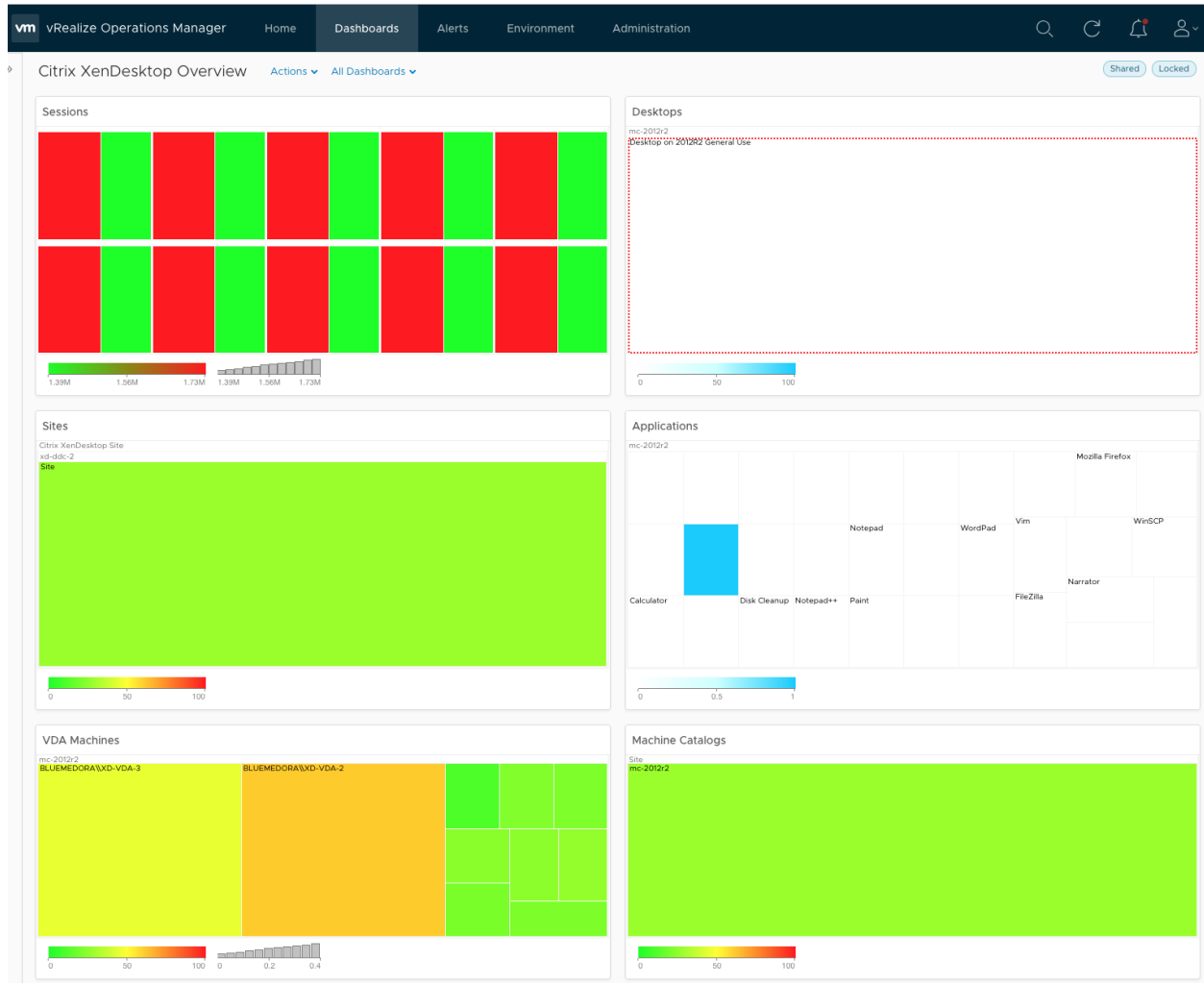
Citrix XenDesktop Health Investigation

The **Citrix XenDesktop Health Investigation** dashboard allows you to select a XenDesktop resource from the Environment Overview widget to view its relationships, alerts, and selected metrics charts.



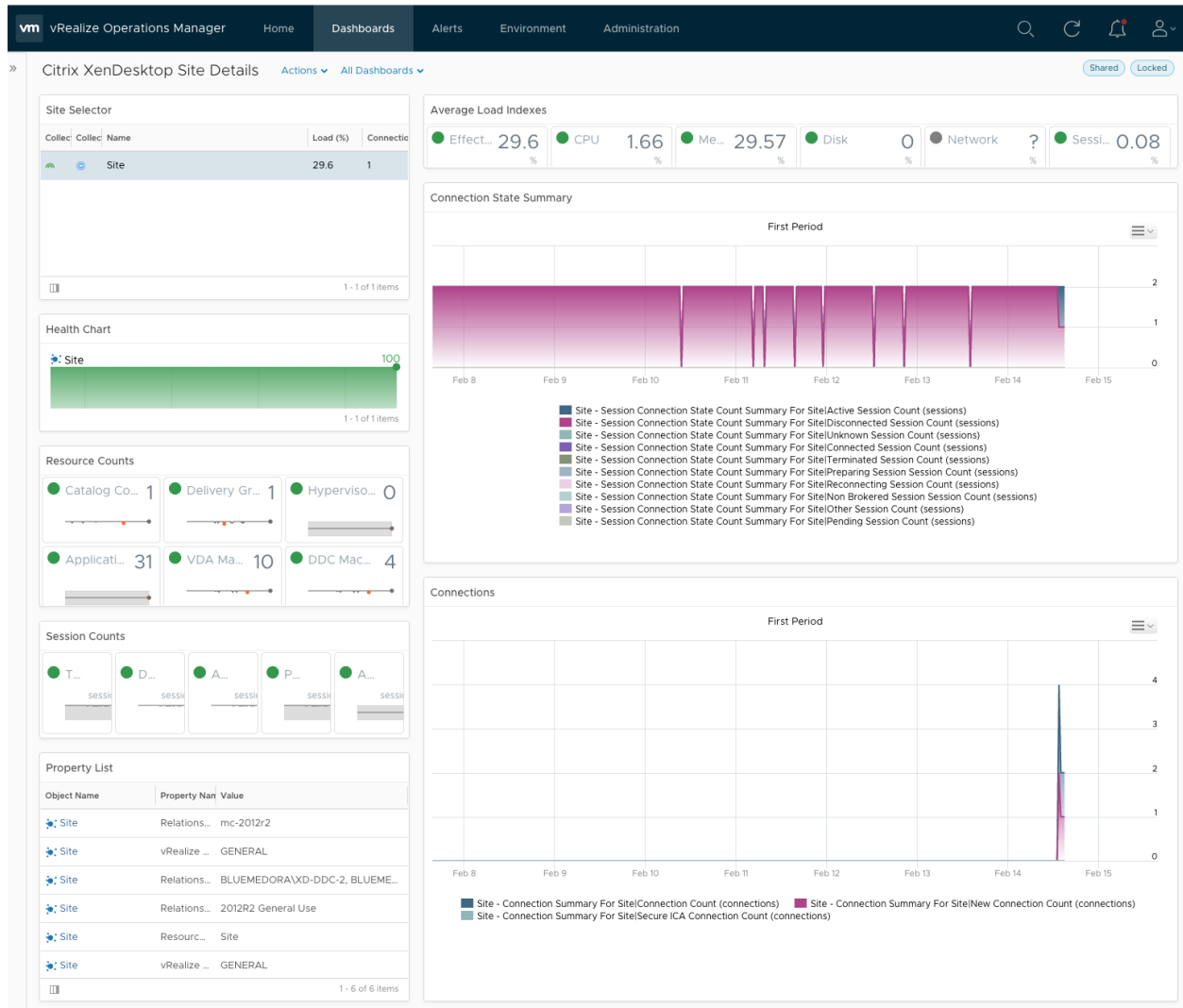
Citrix XenDesktop Overview

The **Citrix XenDesktop Overview** dashboard displays heatmaps depicting the overall health of each resource kind in your Citrix VDI environment, enabling admins to efficiently monitor their environment at-a-glance.



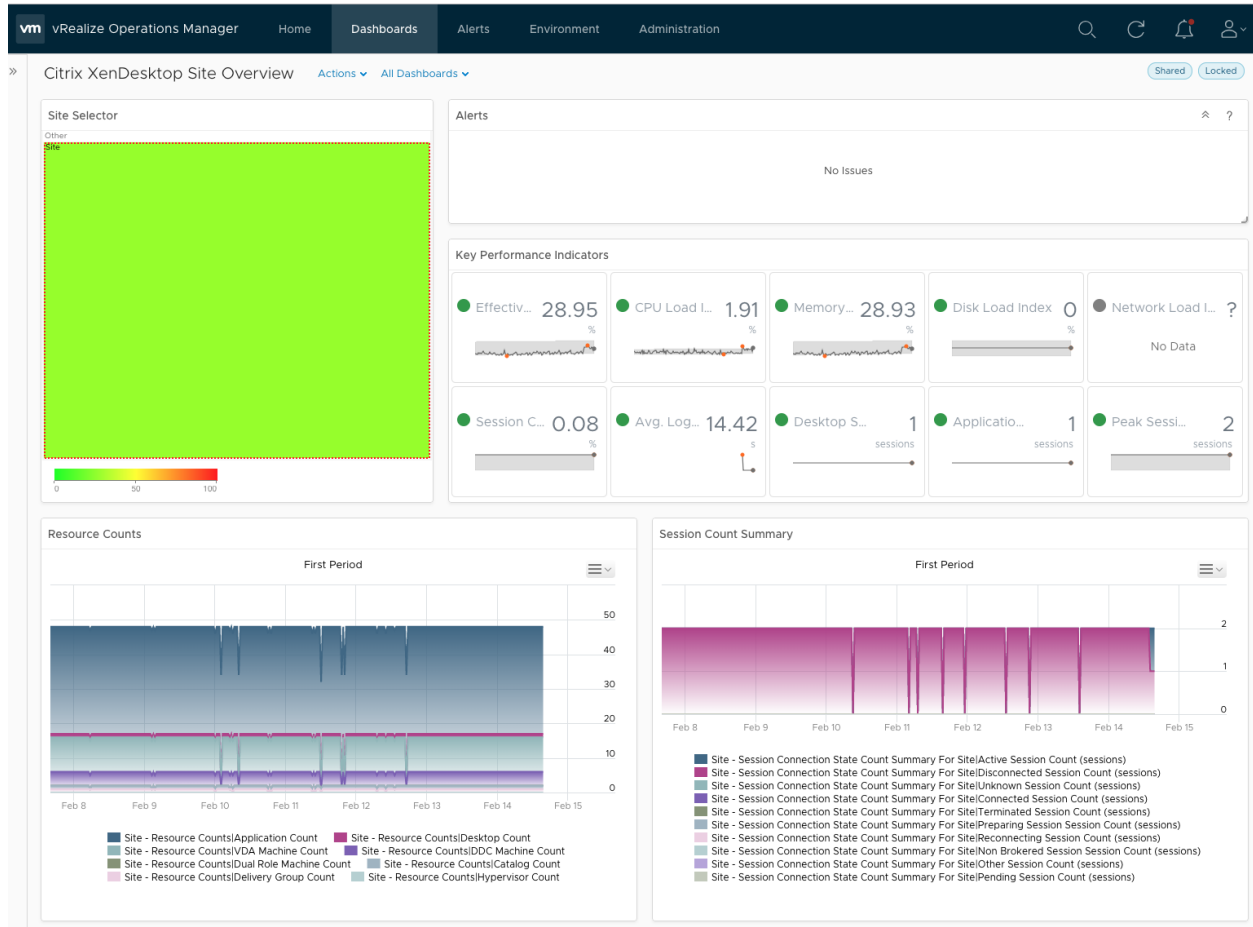
Citrix XenDesktop Site Details

The **Citrix XenDesktop Site Details** dashboard provides details and KPIs about sites in your Citrix VDI environment. Select a site from the widget on the left to view its health, properties, and resource/session counts, as well as summaries of its average load indexes, connection state counts, and connections.



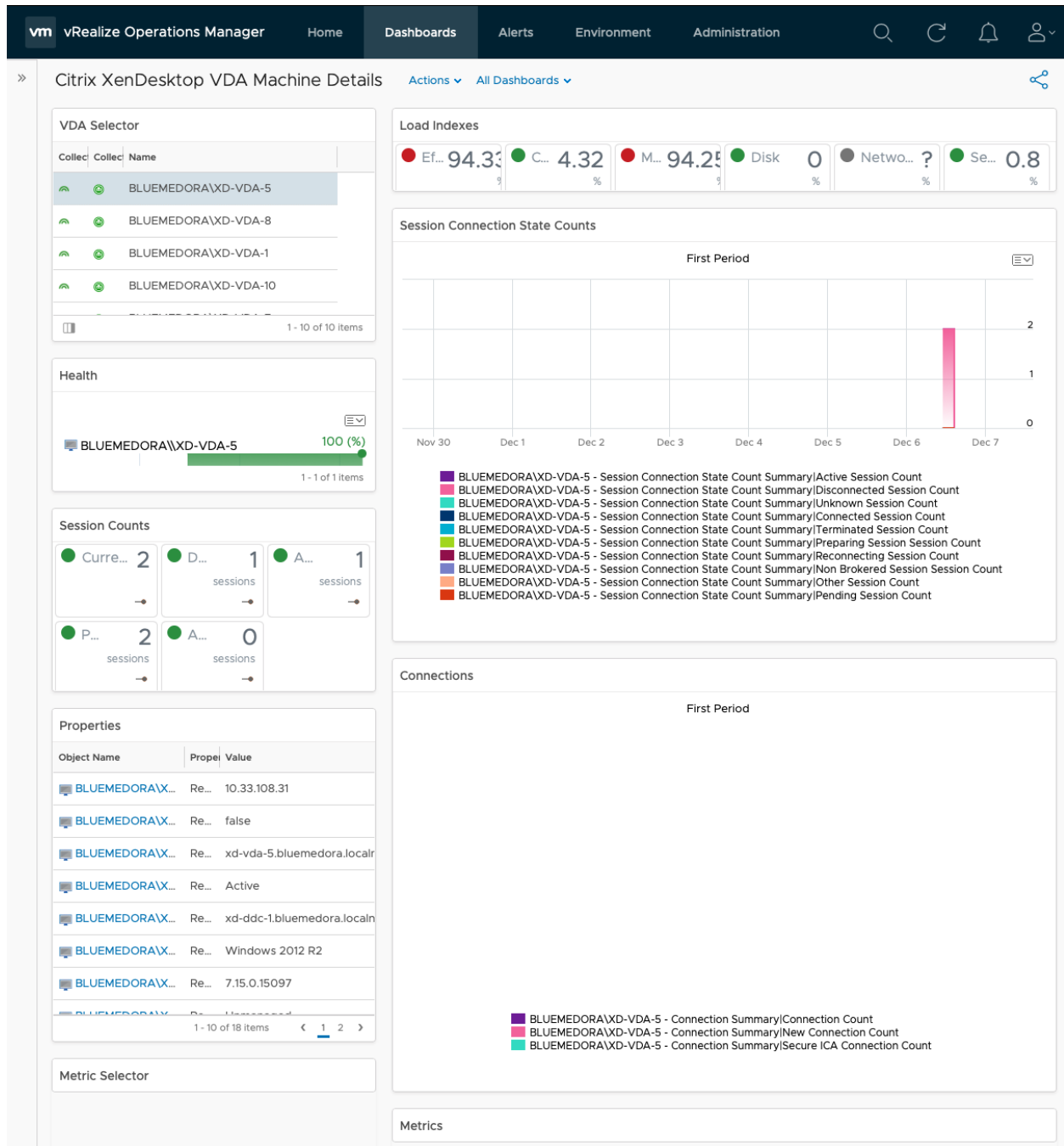
Citrix XenDesktop Site Overview

The **Citrix XenDesktop Site Overview** dashboard provides an overview of the selected XenDesktop site. Select a site from the heatmap on the left to view its alerts, KPIs, resource counts, and a session count summary.



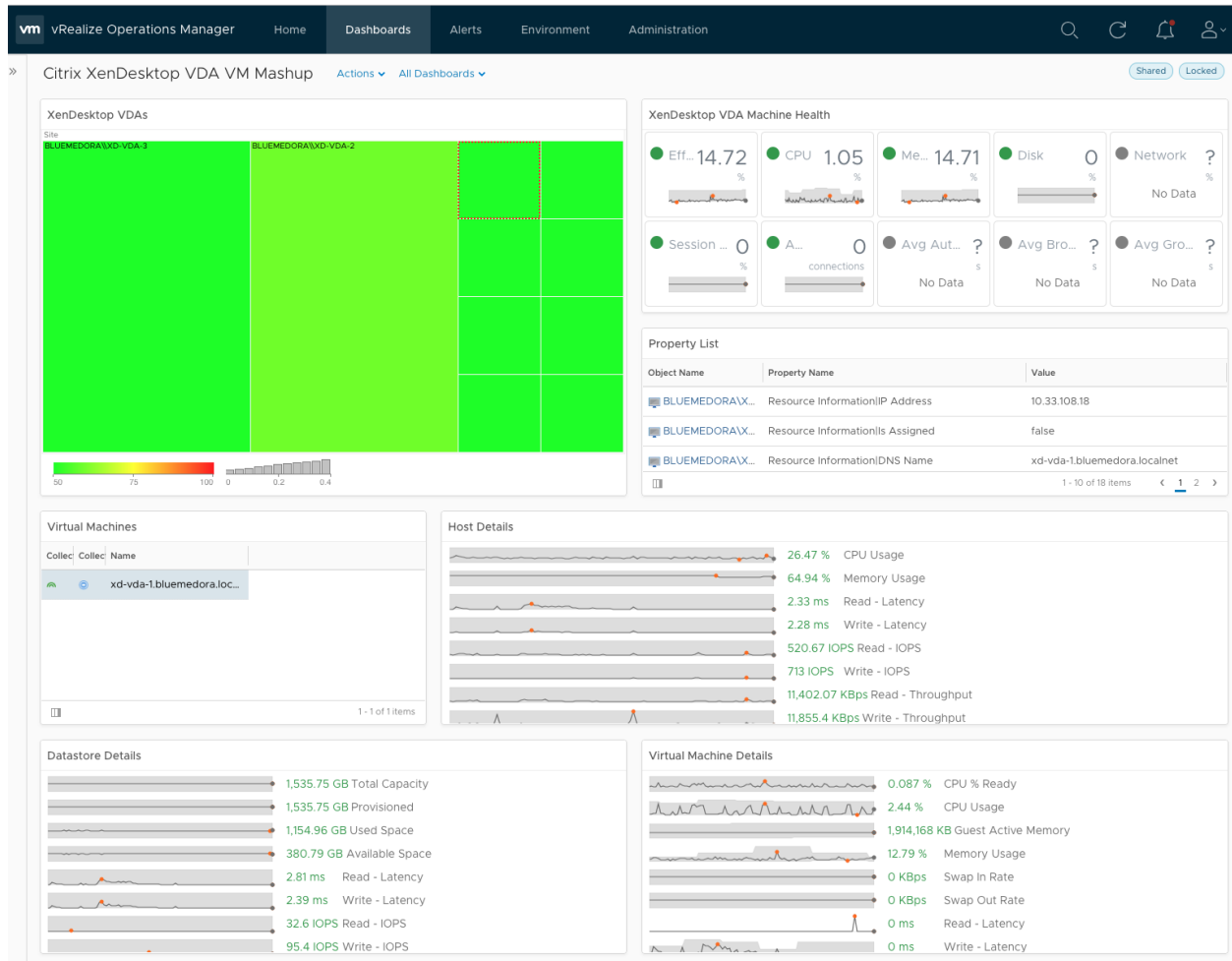
Citrix XenDesktop VDA Machine Details

The **Citrix XenDesktop VDA Machine Details** dashboard provides details and KPIs about VDA machines in your Citrix VDI environment. Select a VDA from the widget on the left to view its health, properties, and session counts, as well as summaries of its load indexes, session connection state counts, and connections.



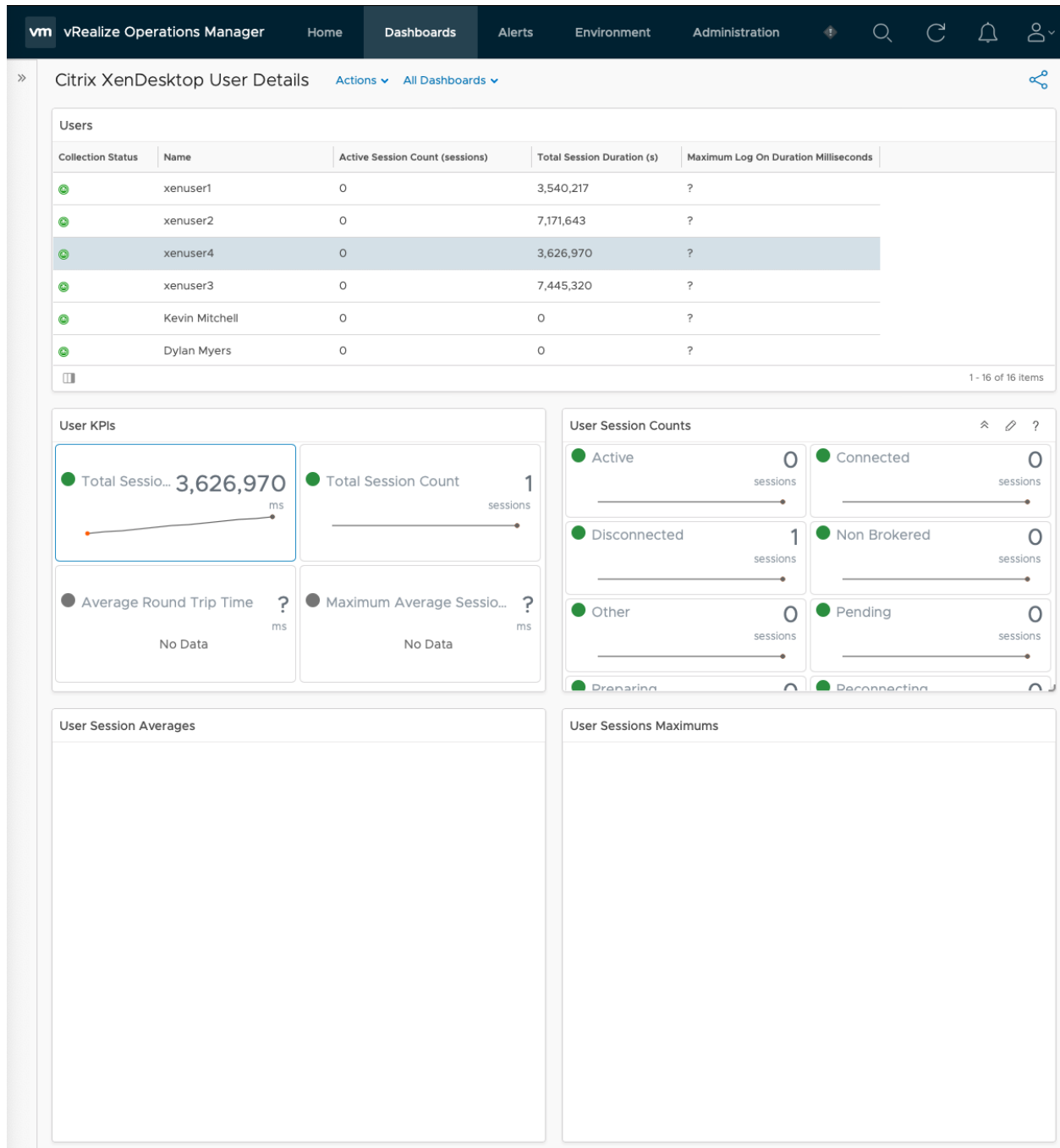
Citrix XenDesktop VDA VM Mashup

The Citrix XenDesktop VDA VM Mashup dashboard provides a comparison view of VDA machines and their associated virtual machines, datastores, and hosts according to key performance metrics.



Citrix XenDesktop User Details

The **Citrix XenDesktop User Details** dashboard displays relevant statistics about the different users in your XenDesktop environment.



Tags (Citrix Virtual Apps & Desktops)

To further customize how your Management Pack dashboards are displayed, the following tags (containers) are currently available for filtering:

- VMware **VMs** hosting: Citrix XenDesktop Machines
- VMware **Datastores** hosting: Citrix XenDesktop Machines
- VMware **Host Systems** hosting: Citrix XenDesktop Machines

■ XenDesktop Server OS Machines

To select a tag, perform the following steps:

Important Depending on the dashboard, the steps for selecting a tag may vary slightly.

- 1 Click the **Content** navigation shortcut.
- 2 Select **Dashboards** from the navigation pane.
- 3 Select the dashboard you want to filter, then click **Edit**.
- 4 Select **Edit Widget** for the dashboard widget you want to edit .
- 5 Select the desired configuration from the drop-down menu.
- 6 Under **Filter**, expand the **XenDesktop Container** option and select the desired tag(s).
- 7 To save your configuration and exit the Edit window, click **Save** .

Important If selecting multiple configurations, you can save each one without exiting the Edit window by clicking Save Configuration.

Views (Citrix Virtual Apps & Desktops)

The Management Pack for Citrix Virtual Apps & Desktops creates views that allow the user to view statistics of metrics for Citrix VDI resources. The views help give a broad picture of the entire system, as opposed to a more in depth view.

The following views are available in the Management Pack:

View	Type	Description
Citrix XenDesktop Active Alerts	List	Shows active alerts for Citrix XenDesktop Resources and their descendants
Citrix XenDesktop Application Instance Properties	List	Shows properties for Citrix XenDesktop Application Instance
Citrix XenDesktop Application Instances List View	List	Provides XenDesktop Application instance information which can be aggregated across XenDesktop Sites, Hypervisors, Catalogs, Delivery Groups and VDA Machines
Citrix XenDesktop Application KPI Trends	Trend	Provides XenDesktop Application key metrics over time
Citrix XenDesktop Application KPIs	List	Shows all KPIs for Citrix XenDesktop Application
Citrix XenDesktop Application Properties	List	Shows properties for Citrix XenDesktop Application
Citrix XenDesktop Catalog Capacities	List	Shows all properties for Citrix XenDesktop Catalog
Citrix XenDesktop Catalog KPIs	List	Shows all KPIs for Citrix XenDesktop Catalog
Citrix XenDesktop Catalog Properties	List	Shows properties for Citrix XenDesktop Catalog
Citrix XenDesktop DDC Machine Properties	List	Shows properties for Citrix XenDesktop DDC Machine

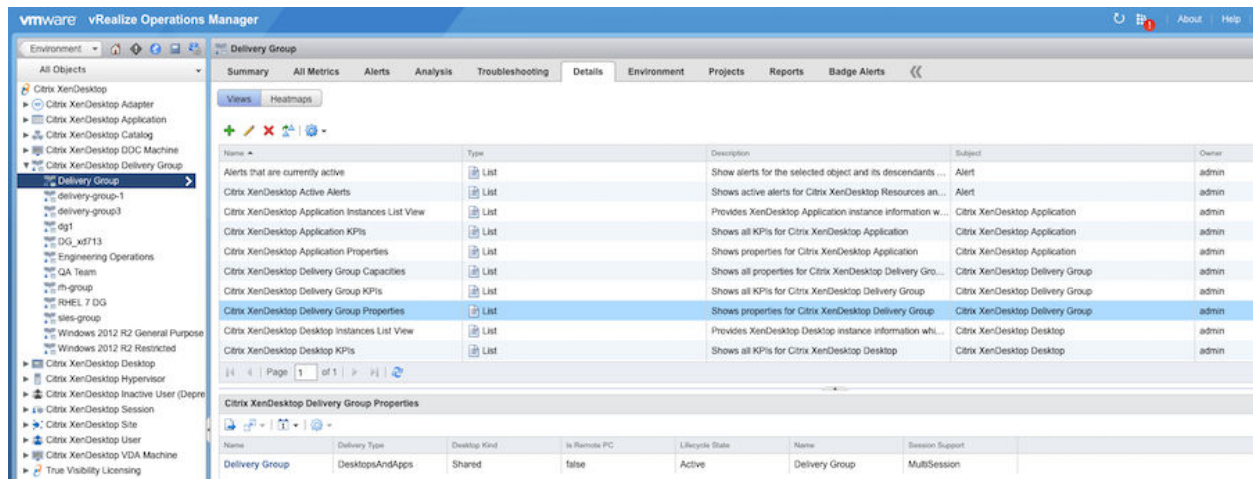
Citrix XenDesktop Delivery Group Capacities	List	Shows all properties for Citrix XenDesktop Delivery Group
Citrix XenDesktop Delivery Group KPIs	List	Shows all KPIs for Citrix XenDesktop Delivery Group
Citrix XenDesktop Delivery Group Properties	List	Shows properties for Citrix XenDesktop Delivery Group
Citrix XenDesktop Desktop Instances List View	List	Provides XenDesktop Desktop instance information which can be aggregated across XenDesktop Sites, Hypervisors, Catalogs, Delivery Groups and VDA Machines
Citrix XenDesktop Desktop KPI Trends	Trend	Provides XenDesktop Desktop key metrics over time
Citrix XenDesktop Desktop KPIs	List	Shows all KPIs for Citrix XenDesktop Desktop
Citrix XenDesktop Desktop Properties	List	Shows properties for Citrix XenDesktop Desktop
Citrix XenDesktop Health	List	Shows health and availability for Citrix XenDesktop Resources
Citrix XenDesktop Hypervisor Capacities	List	Shows all properties for Citrix XenDesktop Hypervisor
Citrix XenDesktop Hypervisor KPIs	List	Shows all KPIs for Citrix XenDesktop Hypervisor
Citrix XenDesktop Hypervisor Properties	List	Shows properties for Citrix XenDesktop Hypervisor
Citrix XenDesktop Session KPIs	List	Shows all KPIs for Citrix XenDesktop Session
Citrix XenDesktop Session Properties	List	Shows properties for Citrix XenDesktop Session
Citrix XenDesktop Site Capacities	List	Shows all properties for Citrix XenDesktop Site
Citrix XenDesktop Site Connection Summary Trend View	Trend	Average Log On Duration in seconds for a Site
Citrix XenDesktop Site KPIs	List	Shows all KPIs for Citrix XenDesktop Site
Citrix XenDesktop Site Properties	List	Shows properties for Citrix XenDesktop Site
Citrix XenDesktop User KPIs	List	Shows all KPIs for Citrix XenDesktop User
Citrix XenDesktop User Properties	List	Shows properties for Citrix XenDesktop User
Citrix XenDesktop Users to Desktops	List	Displays Users with the Desktops they are associated with
Citrix XenDesktop VDA Connection Summary List View	List	Average time spent during each segment of the logon process by VDA
Citrix XenDesktop VDA KPI Trends	Trend	Provides XenDesktop VDA machine key metrics over time
Citrix XenDesktop VDA Machine Capacities	List	Shows all properties for Citrix XenDesktop VDA Machine
Citrix XenDesktop VDA Machine KPIs	List	Shows all KPIs for Citrix XenDesktop VDA Machine
Citrix XenDesktop VDA Machine Load Index List View	List	Provides VDA machine load index percent which can be aggregated across XenDesktop Sites, Hypervisors, Catalogs and Delivery Groups
Citrix XenDesktop VDA Machine Properties	List	Shows properties for Citrix XenDesktop VDA Machine

To access the Management Pack views:

- 1 Navigate to **Environment > All Objects > Citrix XenDesktop Adapter**.
- 2 Double-click on the desired object (resource).
- 3 Select the **Details** tab, then **Views**.

The available views for that resource are listed and can be selected.

Accessing Views



Reports (Citrix Virtual Apps & Desktops)

The Management Pack for Citrix Virtual Apps & Desktops contains out-of-the-box report(s) that you can export and easily share with key stakeholders in either .pdf or .csv formats.

The following reports are available in the Management Pack:

Report	Description
Citrix XenDesktop Capacities	Shows capacity metrics for every applicable Citrix XenDesktop Resource
Citrix XenDesktop Health and Availability	Shows Health and Availability for every Citrix XenDesktop Resource
Citrix XenDesktop KPIs	Shows all KPIs for every Citrix XenDesktop Resource
Citrix XenDesktop Properties	Shows all properties for every Citrix XenDesktop Resource
Citrix XenDesktop Site Connection Summary by VDA	Trend view displaying the Average Log On Duration for a given Site to easily compare against the time taken by the Site's VDAs
Citrix XenDesktop Users to Desktops	Displays Users with their associated Desktops

To access Management Pack reports:

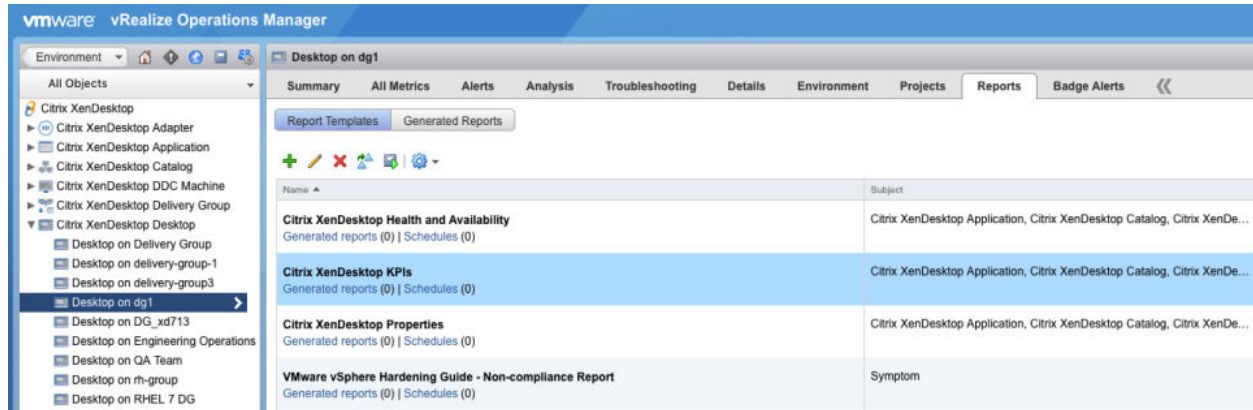
- 1 Navigate to **Environment > All Objects > Citrix XenDesktop Adapter**.
- 2 Double-click on the desired object (resource).

3 Select the **Reports** tab, then **Report Templates**.

The available report(s) for the selected resource are listed and can be selected.

To run a selected report, click the **Run Template**  icon.

Accessing Reports



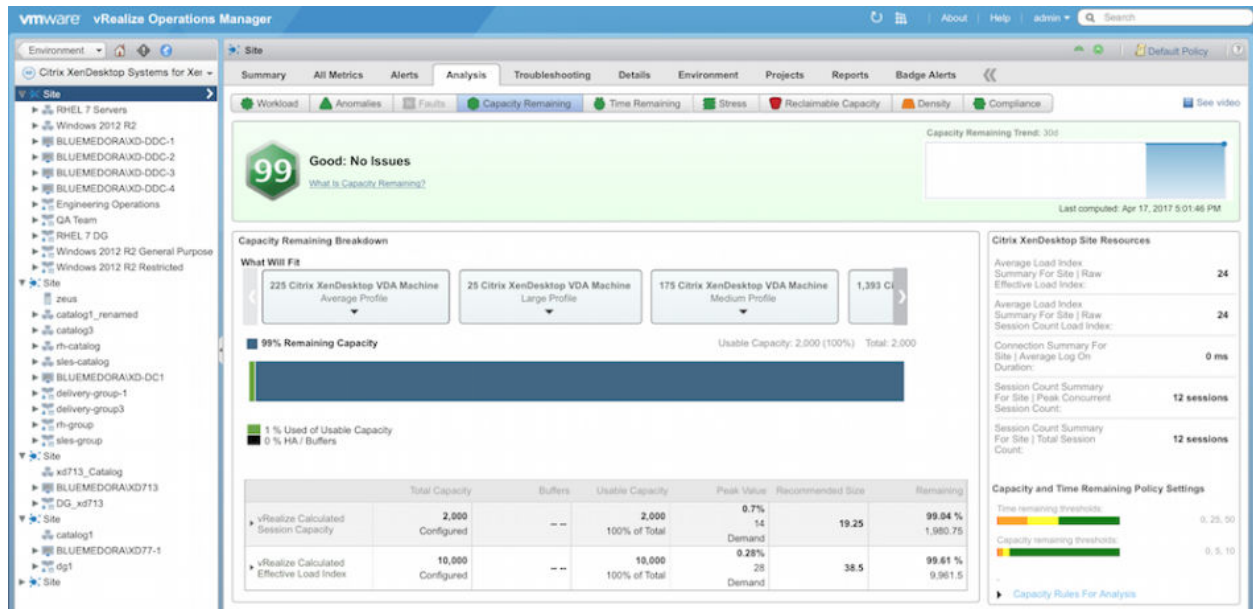
See also:

[Views \(Citrix Virtual Apps & Desktops\)](#)

Analysis Badges and Capacity Definitions (Citrix Virtual Apps & Desktops)

Using the predictive analytics capabilities of the vROps Analysis Badges through capacity definitions, the Management Pack populates capacity and utilization breakdowns for XenDesktop/XenApp resources.

Analysis Badge Example



Capacity Definitions List

Container	Use in Workload
XenDesktop Catalog	
vRealize Calculated Effective Load Index	yes
vRealize Calculated Session Capacity	yes
XenDesktop Delivery Group	
vRealize Calculated Effective Load Index	yes
vRealize Calculated Session Capacity	yes
XenDesktop Hypervisor	
vRealize Calculated Effective Load Index	yes
vRealize Calculated Session Capacity	yes
XenDesktop Site	
vRealize Calculated Effective Load Index	yes
vRealize Calculated Session Capacity	yes
XenDesktop VDA Machine	
vRealize Calculated Effective Load Index	yes
vRealize Calculated Session Capacity	yes

See also:

[Alerts \(Citrix Virtual Apps & Desktops\)](#)

Metrics (Citrix Virtual Apps & Desktops)

Alerts (Citrix Virtual Apps & Desktops)

The Management Pack for Citrix Virtual Apps & Desktops creates alerts based on events passed from your Citrix VDI environment. It provides recommended actions based on various symptoms that it detects in the environment. See the table below for the list of alerts available in the Management Pack.

Alert Description/Symptom	Recommendation
OData API Request Timeout	Verify that the failure to the URI specified in the symptom is not recurring or frequent. Ensure that the Event Log on the Delivery Controller targeted is clear of related errors.
Client Connection Failure: Connection Timeout	
Client Connection Failure: Ticketing	
Client Connection Failure: General Fail	
Client Connection Failure: Other	
Configuration: Active Session Reconnect Disabled	
Configuration: Application Disabled	
Configuration: Disallowed Protocol	
Configuration: Maintenance Mode	
Configuration: Resource Unavailable	
Machine Failure: Session Preparation	
Machine Failure: Spin Up Failed	
Machine Failure: Registration Timeout	
Machine Failure: No Session To Reconnect	
Machine Failure: Machine Not Functional	
Machine Failure: Refused	
Machine Failure: Configuration Set Failure	
No Capacity Available: No Machine Available	
No Capacity Available: Session Limit Reached	Consider adding more VDAs to the affected Delivery Group.
No Licenses Available: Licensing	Verify sufficient licenses are available via the license server.

No Licenses Available: License Feature Refused	Consider upgrading license level if the feature attempting to be used is desirable.
Failed To Start: Agent Address Resolution Failed	
Failed To Start: Agent Not Contactable	
Failed To Start: Agent Rejected Settings Update	
Failed To Start: Agent Requested	
Failed To Start: Agent Shutdown	
Failed To Start: Agent Suspended	
Failed To Start: Agent Wrong Active Directory OU	Correct configuration of the Organizational Unit (OU) in Active Directory is required.
Failed To Start: Broker Registration Limit Reached	
Failed To Start: Contact Lost	
Failed To Start: Desktop Removed	
Failed To Start: Desktop Restart	
Failed To Start: Empty Registration Request	
Failed To Start: Functional Level Too Low For Catalog	Make sure that the Catalog supports older VDAs.
Failed To Start: Functional Level Too Low For Desktop Group	Make sure that the Delivery Group supports older VDAs.
Failed To Start: Hard Registration Pending	
Failed To Start: Hypervisor Rate Limit Exceeded	
Failed To Start: Hypervisor Reported Failure	
Failed To Start: Incompatible Version	
Failed To Start: Inconsistent Registration Capabilities	
Failed To Start: Invalid Registration Request	
Failed To Start: Missing Agent Version	
Failed To Start: Missing Registration Capabilities	
Failed To Start: Not Licensed For Feature	
Failed To Start: Power Off	
Failed To Start: Send Settings Failure	
Failed To Start: Session Audit Failure	
Failed To Start: Session Prepare Failure	
Failed To Start: Settings Creation Failure	

Failed To Start: Single Multi Session Mismatch	In order to have multiple sessions on a machine, the machine needs to be registered as a multi-session machine and not a single-session machine.
Failed To Start: Soft Registered	Please add the soft registered machine to a Catalog.
Failed To Start: Unknown	
Failed To Start: Unknown Error	
Failed To Start: Unsupported Credential Security Version	
Max Capacity: Agent Address Resolution Failed	
Max Capacity: Agent Not Contactable	
Max Capacity: Agent Rejected Settings Update	
Max Capacity: Agent Requested	
Max Capacity: Agent Shutdown	
Max Capacity: Agent Suspended	
Max Capacity: Agent Wrong Active Directory OU	Correct configuration of the Organizational Unit (OU) in Active Directory is required.
Max Capacity: Broker Registration Limit Reached	
Max Capacity: Contact Lost	
Max Capacity: Desktop Removed	
Max Capacity: Desktop Restart	
Max Capacity: Empty Registration Request	
Max Capacity: Functional Level Too Low For Catalog	Make sure that the Catalog supports older VDAs.
Max Capacity: Functional Level Too Low For Desktop Group	Make sure that the Delivery Group supports older VDAs.
Max Capacity: Hard Registration Pending	
Max Capacity: Hypervisor Rate Limit Exceeded	
Max Capacity: Hypervisor Reported Failure	
Max Capacity: Incompatible Version	
Max Capacity: Inconsistent Registration Capabilities	
Max Capacity: Invalid Registration Request	
Max Capacity: Missing Agent Version	
Max Capacity: Missing Registration Capabilities	
Max Capacity: Not Licensed For Feature	

Max Capacity: Power Off	
Max Capacity: Send Settings Failure	
Max Capacity: Session Audit Failure	
Max Capacity: Session Prepare Failure	
Max Capacity: Settings Creation Failure	
Max Capacity: Single Multi Session Mismatch	In order to have multiple sessions on a machine, the machine needs to be registered as a multi-session machine and not a single-session machine.
Max Capacity: Soft Registered	Please add the soft registered machine to a Catalog.
Max Capacity: Unknown	
Max Capacity: Unknown Error	
Max Capacity: Unsupported Credential Security Version	
Stuck On Boot: Agent Address Resolution Failed	
Stuck On Boot: Agent Not Contactable	
Stuck On Boot: Agent Rejected Settings Update	
Stuck On Boot: Agent Requested	
Stuck On Boot: Agent Shutdown	
Stuck On Boot: Agent Suspended	
Stuck On Boot: Agent Wrong Active Directory OU	Correct configuration of the Organizational Unit (OU) in Active Directory is required.
Stuck On Boot: Broker Registration Limit Reached	
Stuck On Boot: Contact Lost	
Stuck On Boot: Desktop Removed	
Stuck On Boot: Desktop Restart	
Stuck On Boot: Empty Registration Request	
Stuck On Boot: Functional Level Too Low For Catalog	Make sure that the Catalog supports older VDAs.
Stuck On Boot: Functional Level Too Low For Desktop Group	Make sure that the Delivery Group supports older VDAs.
Stuck On Boot: Hard Registration Pending	
Stuck On Boot: Hypervisor Rate Limit Exceeded	
Stuck On Boot: Hypervisor Reported Failure	
Stuck On Boot: Incompatible Version	

Stuck On Boot: Inconsistent Registration Capabilities	
Stuck On Boot: Invalid Registration Request	
Stuck On Boot: Missing Agent Version	
Stuck On Boot: Missing Registration Capabilities	
Stuck On Boot: Not Licensed For Feature	
Stuck On Boot: Power Off	
Stuck On Boot: Send Settings Failure	
Stuck On Boot: Session Audit Failure	
Stuck On Boot: Session Prepare Failure	
Stuck On Boot: Settings Creation Failure	
Stuck On Boot: Single Multi Session Mismatch	In order to have multiple sessions on a machine, the machine needs to be registered as a multi-session machine and not a single-session machine.
Stuck On Boot: Soft Registered	Please add the soft registered machine to a Catalog.
Stuck On Boot: Unknown	
Stuck On Boot: Unknown Error	
Stuck On Boot: Unsupported Credential Security Version	
Unregistered: Agent Address Resolution Failed	
Unregistered: Agent Not Contactable	
Unregistered: Agent Rejected Settings Update	
Unregistered: Agent Requested	
Unregistered: Agent Shutdown	
Unregistered: Agent Suspended	
Unregistered: Agent Wrong Active Directory OU	Correct configuration of the Organizational Unit (OU) in Active Directory is required.
Unregistered: Broker Registration Limit Reached	
Unregistered: Contact Lost	
Unregistered: Desktop Removed	
Unregistered: Desktop Restart	
Unregistered: Empty Registration Request	
Unregistered: Functional Level Too Low For Catalog	Make sure that the Catalog supports older VDAs.

Unregistered: Functional Level Too Low For Desktop Group	Make sure that the Delivery Group supports older VDAs.
Unregistered: Hard Registration Pending	
Unregistered: Hypervisor Rate Limit Exceeded	
Unregistered: Hypervisor Reported Failure	
Unregistered: Incompatible Version	
Unregistered: Inconsistent Registration Capabilities	
Unregistered: Invalid Registration Request	
Unregistered: Missing Agent Version	
Unregistered: Missing Registration Capabilities	
Unregistered: Not Licensed For Feature	
Unregistered: Power Off	
Unregistered: Send Settings Failure	
Unregistered: Session Audit Failure	
Unregistered: Session Prepare Failure	
Unregistered: Settings Creation Failure	
Unregistered: Single Multi Session Mismatch	In order to have multiple sessions on a machine, the machine needs to be registered as a multi-session machine and not a single-session machine.
Unregistered: Soft Registered	Please add the soft registered machine to a Catalog.
Unregistered: Unknown	
Unregistered: Unknown Error	
Unregistered: Unsupported Credential Security Version	

See also:

[Metrics \(Citrix Virtual Apps & Desktops\)](#)

Metrics (Citrix Virtual Apps & Desktops)

The Management Pack for XenDesktop & XenApp collects the metrics listed in the table below, according to XenDesktop resource kinds.

Important Certain Network metrics (indicated with an asterisk *) will not load without Citrix NetScaler.

[Download metrics as .csv file](#)

Resource Kind	Resource Group	Resource Attribute	Attribute Type	Attribute Description
Citrix XenDesktop Adapter	Resource Properties	Total Users	float	The total number of Users in the monitored system.
XenDesktop Container	Relationships	VDA Machine Children	string	List of children VDA Machine resources
XenDesktop Container	Relationships	Datastore Children	string	List of children Datastore resources
XenDesktop Container	Relationships	Host System Children	string	List of children Host System resources
XenDesktop Container	Relationships	Virtual Machine Children	string	List of children Virtual Machine resources
Citrix XenDesktop Application	Application Instance Summary	Average Instance Duration Minutes	float	The average Application/Desktop instance duration associated with the resource.
Citrix XenDesktop Application	Application Instance Summary	Instance Count	float	The number of Application/Desktop instances associated with the resource.
Citrix XenDesktop Application	Connection Failure Count Summary For Application	Active Session Reconnect Disabled Connection Failures	integer	The number of connection failures with the 'ActiveSessionReconnectDisabled' type.
Citrix XenDesktop Application	Connection Failure Count Summary For Application	Application Disabled Connection Failures	integer	The number of connection failures with the 'ApplicationDisabled' type.
Citrix XenDesktop Application	Connection Failure Count Summary For Application	Configuration Set Failure Connection Failures	integer	The number of connection failures with the 'ConfigurationSetFailure' type.
Citrix XenDesktop Application	Connection Failure Count Summary For Application	Connection Timeout Failures	integer	The number of connection failures with the 'ConnectionTimeout' type.
Citrix XenDesktop Application	Connection Failure Count Summary For Application	Disallowed Protocol Connection Failures	integer	The number of connection failures with the 'DisallowedProtocol' type.
Citrix XenDesktop Application	Connection Failure Count Summary For Application	General Fail Connection Failures	integer	The number of connection failures with the 'GeneralFail' type.

Resource Kind	Resource Group	Resource Attribute	Attribute Type	Attribute Description
Citrix XenDesktop Application	Connection Failure Count Summary For Application	License Feature Refused Connection Failures	integer	The number of connection failures with the 'LicenseFeatureRefused' type.
Citrix XenDesktop Application	Connection Failure Count Summary For Application	Licensing Connection Failures	integer	The number of connection failures with the 'Licensing' type.
Citrix XenDesktop Application	Connection Failure Count Summary For Application	Machine Not Functional Connection Failures	integer	The number of connection failures with the 'MachineNotFunctional' type.
Citrix XenDesktop Application	Connection Failure Count Summary For Application	Maintenance Mode Connection Failures	integer	The number of connection failures with the 'MaintenanceMode' type.
Citrix XenDesktop Application	Connection Failure Count Summary For Application	No Desktop Available Connection Failures	integer	The number of connection failures with the 'NoDesktopAvailable' type.
Citrix XenDesktop Application	Connection Failure Count Summary For Application	No Machine Available Connection Failures	integer	The number of connection failures with the 'NoMachineAvailable' type.
Citrix XenDesktop Application	Connection Failure Count Summary For Application	No Session To Reconnect Connection Failures	integer	The number of connection failures with the 'NoSessionToReconnect' type.
Citrix XenDesktop Application	Connection Failure Count Summary For Application	Other Connection Failures	integer	The number of connection failures with the 'Other' type.
Citrix XenDesktop Application	Connection Failure Count Summary For Application	Refused Connection Failures	integer	The number of connection failures with the 'Refused' type.
Citrix XenDesktop Application	Connection Failure Count Summary For Application	Registration Timeout Connection Failures	integer	The number of connection failures with the 'RegistrationTimeout' type.
Citrix XenDesktop Application	Connection Failure Count Summary For Application	Resource Unavailable Connection Failures	integer	The number of connection failures with the 'ResourceUnavailable' type.

Resource Kind	Resource Group	Resource Attribute	Attribute Type	Attribute Description
Citrix XenDesktop Application	Connection Failure Count Summary For Application	Session Limit Reached Connection Failures	integer	The number of connection failures with the 'SessionLimitReached' type.
Citrix XenDesktop Application	Connection Failure Count Summary For Application	Session Preparation Connection Failures	integer	The number of connection failures with the 'SessionPreparation' type.
Citrix XenDesktop Application	Connection Failure Count Summary For Application	Spin Up Failed Connection Failures	integer	The number of connection failures with the 'SpinUpFailed' type.
Citrix XenDesktop Application	Connection Failure Count Summary For Application	Ticketing Connection Failures	integer	The number of connection failures with the 'Ticketing' type.
Citrix XenDesktop Application	Connection Failure Count Summary For Application	Total Connection Failures	integer	The total number of connections failures.
Citrix XenDesktop Application	Connection Failure Count Summary For Application	Uncategorized Connection Failures	integer	The number of connection failures with the 'None' type.
Citrix XenDesktop Application	Connection Failure Count Summary For Application	Unknown Connection Failures	integer	The number of connection failures with the 'Unknown' type.
Citrix XenDesktop Application	Connection Summary For Application	Average Authentication Duration	float	The average amount of time for a connection to spend in the Authentication segment of the connection process.
Citrix XenDesktop Application	Connection Summary For Application	Average Authentication Duration	float	The average amount of time for a connection to spend in the Authentication segment of the connection process.
Citrix XenDesktop Application	Connection Summary For Application	Average Brokering Duration	float	The average amount of time for a connection to spend in the Brokering segment of the connection process.
Citrix XenDesktop Application	Connection Summary For Application	Average Brokering Duration	float	The average amount of time for a connection to spend in the Brokering segment of the connection process.
Citrix XenDesktop Application	Connection Summary For Application	Average Group Policy Duration	float	The average amount of time for a connection to spend in the Group Policy segment of the connection process.
Citrix XenDesktop Application	Connection Summary For Application	Average Group Policy Duration	float	The average amount of time for a connection to spend in the Group Policy segment of the connection process.

Resource Kind	Resource Group	Resource Attribute	Attribute Type	Attribute Description
Citrix XenDesktop Application	Connection Summary For Application	Average HDX Duration	float	The average amount of time for a connection to spend in the HDX segment of the connection process.
Citrix XenDesktop Application	Connection Summary For Application	Average HDX Duration	float	The average amount of time for a connection to spend in the HDX segment of the connection process.
Citrix XenDesktop Application	Connection Summary For Application	Average Interactive Duration	float	The average amount of time for a connection to spend in the Interactive segment of the connection process.
Citrix XenDesktop Application	Connection Summary For Application	Average Interactive Duration	float	The average amount of time for a connection to spend in the Interactive segment of the connection process.
Citrix XenDesktop Application	Connection Summary For Application	Average Log On Duration	float	The average amount of time for a connection to spend in the Log On segment of the connection process.
Citrix XenDesktop Application	Connection Summary For Application	Average Log On Duration	float	The average amount of time for a connection to spend in the Log On segment of the connection process.
Citrix XenDesktop Application	Connection Summary For Application	Average Log On Scripts Duration	float	The average amount of time for a connection to spend in the Log On Scripts segment of the connection process.
Citrix XenDesktop Application	Connection Summary For Application	Average Log On Scripts Duration	float	The average amount of time for a connection to spend in the Log On Scripts segment of the connection process.
Citrix XenDesktop Application	Connection Summary For Application	Average Profile Load Duration	float	The average amount of time for a connection to spend in the Profile Load segment of the connection process.
Citrix XenDesktop Application	Connection Summary For Application	Average Profile Load Duration	float	The average amount of time for a connection to spend in the Profile Load segment of the connection process.
Citrix XenDesktop Application	Connection Summary For Application	Average VM Start Duration	float	The average amount of time for a connection to spend in the VM Start segment of the connection process.
Citrix XenDesktop Application	Connection Summary For Application	Average VM Start Duration	float	The average amount of time for a connection to spend in the VM Start segment of the connection process.
Citrix XenDesktop Application	Connection Summary For Application	Connection Count	integer	The number of connections associated with the resource.
Citrix XenDesktop Application	Connection Summary For Application	New Connection Count	integer	The number of new connections associated with the resource.
Citrix XenDesktop Application	Connection Summary For Application	Secure ICA Connection Count	integer	The number of secure ICA connections associated with the resource.

Resource Kind	Resource Group	Resource Attribute	Attribute Type	Attribute Description
Citrix XenDesktop Application	Relationships	Delivery Group Parents	string	List of parent Delivery Group resources
Citrix XenDesktop Application	Relationships	VDA Machine Parents	string	List of parent VDA Machine resources
Citrix XenDesktop Application	Resource Information	Admin Folder	string	The Admin Folder of the Application.
Citrix XenDesktop Application	Resource Information	Application Type	string	The Application's type.
Citrix XenDesktop Application	Resource Information	Enabled	string	Whether or not the Application is enabled.
Citrix XenDesktop Application	Resource Information	Lifecycle State	string	The Lifecycle State of the Application.
Citrix XenDesktop Application	Resource Information	Name	string	The Name of the Application.
Citrix XenDesktop Application	Resource Information	Published Name	string	The Published Name of the Application.
Citrix XenDesktop Application	Session Connection State Count Summary For Application	Active Session Count	integer	The number of active sessions associated with the resource.
Citrix XenDesktop Application	Session Connection State Count Summary For Application	Application Session Count	integer	The number of application sessions associated with the resource.
Citrix XenDesktop Application	Session Connection State Count Summary For Application	Connected Session Count	integer	The number of connected sessions associated with the resource.
Citrix XenDesktop Application	Session Connection State Count Summary For Application	Desktop Session Count	integer	The number of desktop sessions associated with the resource.
Citrix XenDesktop Application	Session Connection State Count Summary For Application	Disconnected Session Count	integer	The number of disconnected sessions associated with the resource.

Resource Kind	Resource Group	Resource Attribute	Attribute Type	Attribute Description
Citrix XenDesktop Application	Session Connection State Count Summary For Application	Non Brokered Session Session Count	integer	The number of non-brokered sessions associated with the resource.
Citrix XenDesktop Application	Session Connection State Count Summary For Application	Other Session Count	integer	The number of 'other' sessions associated with the resource
Citrix XenDesktop Application	Session Connection State Count Summary For Application	Pending Session Count	integer	The number of pending sessions associated with the resource.
Citrix XenDesktop Application	Session Connection State Count Summary For Application	Preparing Session Session Count	integer	The number of sessions being prepared that are associated with the resource.
Citrix XenDesktop Application	Session Connection State Count Summary For Application	Reconnecting Session Count	integer	The number of reconnecting sessions associated with the resource.
Citrix XenDesktop Application	Session Connection State Count Summary For Application	Terminated Session Count	integer	The number of terminated sessions associated with the resource.
Citrix XenDesktop Application	Session Connection State Count Summary For Application	Total Session Count	integer	The total number of sessions associated with the resource
Citrix XenDesktop Application	Session Connection State Count Summary For Application	Unknown Session Count	integer	The number of sessions in an unknown state that are associated with the resource.
Citrix XenDesktop Application	Session Count Summary For Application	Anonymous Session Count	integer	The number of anonymous sessions associated with the resource.
Citrix XenDesktop Application	Session Count Summary For Application	Peak Concurrent Session Count	integer	The peak concurrent sessions associated with the resource.
Citrix XenDesktop Catalog	Capacity	Load Index Maximum Value (a constant value of 10000 for capacity calculations)	integer	Metric generated with purpose of Load Index Maximum Value (a constant value of 10000 for capacity calculations).
Citrix XenDesktop Catalog	Capacity	Session Capacity	float	The session capacity based on the underlying VDA machine(s).

Resource Kind	Resource Group	Resource Attribute	Attribute Type	Attribute Description
Citrix XenDesktop Catalog	Average Load Index Summary For Catalog	CPU Load Index	float	The CPU Load Index from the related underlying VDA machine(s).
Citrix XenDesktop Catalog	Average Load Index Summary For Catalog	Disk Load Index	float	The Disk Load Index from the related underlying VDA machine(s).
Citrix XenDesktop Catalog	Average Load Index Summary For Catalog	Effective Load Index	float	The Effective Load Index from the related underlying VDA machine(s).
Citrix XenDesktop Catalog	Average Load Index Summary For Catalog	Memory Load Index	float	The Memory Load Index from the related underlying VDA machine(s).
Citrix XenDesktop Catalog	Average Load Index Summary For Catalog	Network Load Index*	float	The Network Load Index from the related underlying VDA machine(s).
Citrix XenDesktop Catalog	Average Load Index Summary For Catalog	Raw CPU Load Index	float	The CPU Load Index from the related underlying VDA machine(s).
Citrix XenDesktop Catalog	Average Load Index Summary For Catalog	Raw Disk Load Index	float	The Disk Load Index from the related underlying VDA machine(s).
Citrix XenDesktop Catalog	Average Load Index Summary For Catalog	Raw Effective Load Index	float	The Effective Load Index from the related underlying VDA machine(s).
Citrix XenDesktop Catalog	Average Load Index Summary For Catalog	Raw Memory Load Index	float	The Memory Load Index from the related underlying VDA machine(s).
Citrix XenDesktop Catalog	Average Load Index Summary For Catalog	Raw Network Load Index*	float	The Network Load Index from the related underlying VDA machine(s).
Citrix XenDesktop Catalog	Average Load Index Summary For Catalog	Raw Session Count Load Index	float	The Session Count Load Index from the related underlying VDA machine(s).
Citrix XenDesktop Catalog	Average Load Index Summary For Catalog	Session Count Load Index	float	The Session Count Load Index from the related underlying VDA machine(s).
Citrix XenDesktop Catalog	Connection Failure Count Summary For Catalog	Active Session Reconnect Disabled Connection Failures	integer	The number of connection failures with the 'ActiveSessionReconnectDisabled' type.
Citrix XenDesktop Catalog	Connection Failure Count Summary For Catalog	Application Disabled Connection Failures	integer	The number of connection failures with the 'ApplicationDisabled' type.

Resource Kind	Resource Group	Resource Attribute	Attribute Type	Attribute Description
Citrix XenDesktop Catalog	Connection Failure Count Summary For Catalog	Configuration Set Failure Connection Failures	integer	The number of connection failures with the 'ConfigurationSetFailure' type.
Citrix XenDesktop Catalog	Connection Failure Count Summary For Catalog	Connection Timeout Failures	integer	The number of connection failures with the 'ConnectionTimeout' type.
Citrix XenDesktop Catalog	Connection Failure Count Summary For Catalog	Disallowed Protocol Connection Failures	integer	The number of connection failures with the 'DisallowedProtocol' type.
Citrix XenDesktop Catalog	Connection Failure Count Summary For Catalog	General Fail Connection Failures	integer	The number of connection failures with the 'GeneralFail' type.
Citrix XenDesktop Catalog	Connection Failure Count Summary For Catalog	License Feature Refused Connection Failures	integer	The number of connection failures with the 'LicenseFeatureRefused' type.
Citrix XenDesktop Catalog	Connection Failure Count Summary For Catalog	Licensing Connection Failures	integer	The number of connection failures with the 'Licensing' type.
Citrix XenDesktop Catalog	Connection Failure Count Summary For Catalog	Machine Not Functional Connection Failures	integer	The number of connection failures with the 'MachineNotFunctional' type.
Citrix XenDesktop Catalog	Connection Failure Count Summary For Catalog	Maintenance Mode Connection Failures	integer	The number of connection failures with the 'MaintenanceMode' type.
Citrix XenDesktop Catalog	Connection Failure Count Summary For Catalog	No Desktop Available Connection Failures	integer	The number of connection failures with the 'NoDesktopAvailable' type.
Citrix XenDesktop Catalog	Connection Failure Count Summary For Catalog	No Machine Available Connection Failures	integer	The number of connection failures with the 'NoMachineAvailable' type.
Citrix XenDesktop Catalog	Connection Failure Count Summary For Catalog	No Session To Reconnect Connection Failures	integer	The number of connection failures with the 'NoSessionToReconnect' type.

Resource Kind	Resource Group	Resource Attribute	Attribute Type	Attribute Description
Citrix XenDesktop Catalog	Connection Failure Count Summary For Catalog	Other Connection Failures	integer	The number of connection failures with the 'Other' type.
Citrix XenDesktop Catalog	Connection Failure Count Summary For Catalog	Refused Connection Failures	integer	The number of connection failures with the 'Refused' type.
Citrix XenDesktop Catalog	Connection Failure Count Summary For Catalog	Registration Timeout Connection Failures	integer	The number of connection failures with the 'RegistrationTimeout' type.
Citrix XenDesktop Catalog	Connection Failure Count Summary For Catalog	Resource Unavailable Connection Failures	integer	The number of connection failures with the 'ResourceUnavailable' type.
Citrix XenDesktop Catalog	Connection Failure Count Summary For Catalog	Session Limit Reached Connection Failures	integer	The number of connection failures with the 'SessionLimitReached' type.
Citrix XenDesktop Catalog	Connection Failure Count Summary For Catalog	Session Preparation Connection Failures	integer	The number of connection failures with the 'SessionPreparation' type.
Citrix XenDesktop Catalog	Connection Failure Count Summary For Catalog	Spin Up Failed Connection Failures	integer	The number of connection failures with the 'SpinUpFailed' type.
Citrix XenDesktop Catalog	Connection Failure Count Summary For Catalog	Ticketing Connection Failures	integer	The number of connection failures with the 'Ticketing' type.
Citrix XenDesktop Catalog	Connection Failure Count Summary For Catalog	Total Connection Failures	integer	The total number of connections failures.
Citrix XenDesktop Catalog	Connection Failure Count Summary For Catalog	Uncategorized Connection Failures	integer	The number of connection failures with the 'None' type.
Citrix XenDesktop Catalog	Connection Failure Count Summary For Catalog	Unknown Connection Failures	integer	The number of connection failures with the 'Unknown' type.

Resource Kind	Resource Group	Resource Attribute	Attribute Type	Attribute Description
Citrix XenDesktop Catalog	Connection Summary For Catalog	Average Authentication Duration	float	The average amount of time for a connection to spend in the Authentication segment of the connection process.
Citrix XenDesktop Catalog	Connection Summary For Catalog	Average Authentication Duration	float	The average amount of time for a connection to spend in the Authentication segment of the connection process.
Citrix XenDesktop Catalog	Connection Summary For Catalog	Average Brokering Duration	float	The average amount of time for a connection to spend in the Brokering segment of the connection process.
Citrix XenDesktop Catalog	Connection Summary For Catalog	Average Brokering Duration	float	The average amount of time for a connection to spend in the Brokering segment of the connection process.
Citrix XenDesktop Catalog	Connection Summary For Catalog	Average Group Policy Duration	float	The average amount of time for a connection to spend in the Group Policy segment of the connection process.
Citrix XenDesktop Catalog	Connection Summary For Catalog	Average Group Policy Duration	float	The average amount of time for a connection to spend in the Group Policy segment of the connection process.
Citrix XenDesktop Catalog	Connection Summary For Catalog	Average HDX Duration	float	The average amount of time for a connection to spend in the HDX segment of the connection process.
Citrix XenDesktop Catalog	Connection Summary For Catalog	Average HDX Duration	float	The average amount of time for a connection to spend in the HDX segment of the connection process.
Citrix XenDesktop Catalog	Connection Summary For Catalog	Average Interactive Duration	float	The average amount of time for a connection to spend in the Interactive segment of the connection process.
Citrix XenDesktop Catalog	Connection Summary For Catalog	Average Interactive Duration	float	The average amount of time for a connection to spend in the Interactive segment of the connection process.
Citrix XenDesktop Catalog	Connection Summary For Catalog	Average Log On Duration	float	The average amount of time for a connection to spend in the Log On segment of the connection process.
Citrix XenDesktop Catalog	Connection Summary For Catalog	Average Log On Duration	float	The average amount of time for a connection to spend in the Log On segment of the connection process.
Citrix XenDesktop Catalog	Connection Summary For Catalog	Average Log On Scripts Duration	float	The average amount of time for a connection to spend in the Log On Scripts segment of the connection process.
Citrix XenDesktop Catalog	Connection Summary For Catalog	Average Log On Scripts Duration	float	The average amount of time for a connection to spend in the Log On Scripts segment of the connection process.
Citrix XenDesktop Catalog	Connection Summary For Catalog	Average Profile Load Duration	float	The average amount of time for a connection to spend in the Profile Load segment of the connection process.

Resource Kind	Resource Group	Resource Attribute	Attribute Type	Attribute Description
Citrix XenDesktop Catalog	Connection Summary For Catalog	Average Profile Load Duration	float	The average amount of time for a connection to spend in the Profile Load segment of the connection process.
Citrix XenDesktop Catalog	Connection Summary For Catalog	Average VM Start Duration	float	The average amount of time for a connection to spend in the VM Start segment of the connection process.
Citrix XenDesktop Catalog	Connection Summary For Catalog	Average VM Start Duration	float	The average amount of time for a connection to spend in the VM Start segment of the connection process.
Citrix XenDesktop Catalog	Connection Summary For Catalog	Connection Count	integer	The number of connections associated with the resource.
Citrix XenDesktop Catalog	Connection Summary For Catalog	New Connection Count	integer	The number of new connections associated with the resource.
Citrix XenDesktop Catalog	Connection Summary For Catalog	Secure ICA Connection Count	integer	The number of secure ICA connections associated with the resource.
Citrix XenDesktop Catalog	Relationships	Site Parents	string	List of parent Site resources
Citrix XenDesktop Catalog	Relationships	VDA Machine Children	string	List of child VDA Machine resources
Citrix XenDesktop Catalog	Resource Information	Allocation Type	string	The Allocation Type of the Catalog.
Citrix XenDesktop Catalog	Resource Information	Is Machine Physical	string	The Is Machine Physical of the Catalog.
Citrix XenDesktop Catalog	Resource Information	Lifecycle State	string	The Lifecycle State of the Catalog.
Citrix XenDesktop Catalog	Resource Information	Name	string	The Name of the Catalog.
Citrix XenDesktop Catalog	Resource Information	Persistent User Changes	string	The Persistent User Changes of the Catalog.
Citrix XenDesktop Catalog	Resource Information	Provisioning Scheme Id	string	The Provisioning Scheme Id of the Catalog.
Citrix XenDesktop Catalog	Resource Information	Provisioning Type	string	The Provisioning Type of the Catalog.

Resource Kind	Resource Group	Resource Attribute	Attribute Type	Attribute Description
Citrix XenDesktop Catalog	Resource Information	Session Support	string	The Session Support of the Catalog.
Citrix XenDesktop Catalog	Session Connection State Count Summary For Catalog	Active Session Count	integer	The number of active sessions associated with the resource.
Citrix XenDesktop Catalog	Session Connection State Count Summary For Catalog	Connected Session Count	integer	The number of connected sessions associated with the resource.
Citrix XenDesktop Catalog	Session Connection State Count Summary For Catalog	Disconnected Session Count	integer	The number of disconnected sessions associated with the resource.
Citrix XenDesktop Catalog	Session Connection State Count Summary For Catalog	Non Brokered Session Session Count	integer	The number of non-brokered sessions associated with the resource.
Citrix XenDesktop Catalog	Session Connection State Count Summary For Catalog	Other Session Count	integer	The number of 'other' sessions associated with the resource
Citrix XenDesktop Catalog	Session Connection State Count Summary For Catalog	Pending Session Count	integer	The number of pending sessions associated with the resource.
Citrix XenDesktop Catalog	Session Connection State Count Summary For Catalog	Preparing Session Session Count	integer	The number of sessions being prepared that are associated with the resource.
Citrix XenDesktop Catalog	Session Connection State Count Summary For Catalog	Reconnecting Session Count	integer	The number of reconnecting sessions associated with the resource.
Citrix XenDesktop Catalog	Session Connection State Count Summary For Catalog	Terminated Session Count	integer	The number of terminated sessions associated with the resource.
Citrix XenDesktop Catalog	Session Connection State Count Summary For Catalog	Unknown Session Count	integer	The number of sessions in an unknown state that are associated with the resource.
Citrix XenDesktop Catalog	Session Count Summary For Catalog	Anonymous Session Count	integer	The number of anonymous sessions associated with the resource.

Resource Kind	Resource Group	Resource Attribute	Attribute Type	Attribute Description
Citrix XenDesktop Catalog	Session Count Summary For Catalog	Application Session Count	integer	The number of application sessions associated with the resource.
Citrix XenDesktop Catalog	Session Count Summary For Catalog	Desktop Session Count	integer	The number of desktop sessions associated with the resource.
Citrix XenDesktop Catalog	Session Count Summary For Catalog	Peak Concurrent Session Count	integer	The peak concurrent sessions associated with the resource.
Citrix XenDesktop Catalog	Session Count Summary For Catalog	Total Session Count	integer	The total number of sessions associated with the resource
Citrix XenDesktop DDC Machine	Relationships	Site Parents	string	List of parent Site resources
Citrix XenDesktop DDC Machine	Resource Information	Dns Name	string	The DNS Name of the DDC Machine.
Citrix XenDesktop DDC Machine	Resource Information	Fault State	string	The Fault State of the DDC Machine.
Citrix XenDesktop DDC Machine	Resource Information	Lifecycle State	string	The Lifecycle State of the DDC Machine.
Citrix XenDesktop DDC Machine	Resource Information	Machine Role	string	The Machine Role of the DDC Machine.
Citrix XenDesktop DDC Machine	Resource Information	OS Type	string	The OS Type of the DDC Machine.
Citrix XenDesktop Delivery Group	Capacity	Load Index Maximum Value (a constant value of 10000 for capacity calculations)	integer	Metric generated with purpose of Load Index Maximum Value (a constant value of 10000 for capacity calculations).
Citrix XenDesktop Delivery Group	Capacity	Session Capacity	float	The session capacity based on the underlying VDA machine(s).
Citrix XenDesktop Delivery Group	Average Load Index Summary For Delivery Group	CPU Load Index	float	The CPU Load Index from the related underlying VDA machine(s).

Resource Kind	Resource Group	Resource Attribute	Attribute Type	Attribute Description
Citrix XenDesktop Delivery Group	Average Load Index Summary For Delivery Group	Disk Load Index	float	The Disk Load Index from the related underlying VDA machine(s).
Citrix XenDesktop Delivery Group	Average Load Index Summary For Delivery Group	Effective Load Index	float	The Effective Load Index from the related underlying VDA machine(s).
Citrix XenDesktop Delivery Group	Average Load Index Summary For Delivery Group	Memory Load Index	float	The Memory Load Index from the related underlying VDA machine(s).
Citrix XenDesktop Delivery Group	Average Load Index Summary For Delivery Group	Network Load Index*	float	The Network Load Index from the related underlying VDA machine(s).
Citrix XenDesktop Delivery Group	Average Load Index Summary For Delivery Group	Raw CPU Load Index	float	The CPU Load Index from the related underlying VDA machine(s).
Citrix XenDesktop Delivery Group	Average Load Index Summary For Delivery Group	Raw Disk Load Index	float	The Disk Load Index from the related underlying VDA machine(s).
Citrix XenDesktop Delivery Group	Average Load Index Summary For Delivery Group	Raw Effective Load Index	float	The Effective Load Index from the related underlying VDA machine(s).
Citrix XenDesktop Delivery Group	Average Load Index Summary For Delivery Group	Raw Memory Load Index	float	The Memory Load Index from the related underlying VDA machine(s).
Citrix XenDesktop Delivery Group	Average Load Index Summary For Delivery Group	Raw Network Load Index*	float	The Network Load Index from the related underlying VDA machine(s).
Citrix XenDesktop Delivery Group	Average Load Index Summary For Delivery Group	Raw Session Count Load Index	float	The Session Count Load Index from the related underlying VDA machine(s).
Citrix XenDesktop Delivery Group	Average Load Index Summary For Delivery Group	Session Count Load Index	float	The Session Count Load Index from the related underlying VDA machine(s).

Resource Kind	Resource Group	Resource Attribute	Attribute Type	Attribute Description
Citrix XenDesktop Delivery Group	Connection Failure Count Summary For Delivery Group	Active Session Reconnect Disabled Connection Failures	integer	The number of connection failures with the 'ActiveSessionReconnectDisabled' type.
Citrix XenDesktop Delivery Group	Connection Failure Count Summary For Delivery Group	Application Disabled Connection Failures	integer	The number of connection failures with the 'ApplicationDisabled' type.
Citrix XenDesktop Delivery Group	Connection Failure Count Summary For Delivery Group	Configuration Set Failure Connection Failures	integer	The number of connection failures with the 'ConfigurationSetFailure' type.
Citrix XenDesktop Delivery Group	Connection Failure Count Summary For Delivery Group	Connection Timeout Failures	integer	The number of connection failures with the 'ConnectionTimeout' type.
Citrix XenDesktop Delivery Group	Connection Failure Count Summary For Delivery Group	Disallowed Protocol Connection Failures	integer	The number of connection failures with the 'DisallowedProtocol' type.
Citrix XenDesktop Delivery Group	Connection Failure Count Summary For Delivery Group	General Fail Connection Failures	integer	The number of connection failures with the 'GeneralFail' type.
Citrix XenDesktop Delivery Group	Connection Failure Count Summary For Delivery Group	License Feature Refused Connection Failures	integer	The number of connection failures with the 'LicenseFeatureRefused' type.
Citrix XenDesktop Delivery Group	Connection Failure Count Summary For Delivery Group	Licensing Connection Failures	integer	The number of connection failures with the 'Licensing' type.
Citrix XenDesktop Delivery Group	Connection Failure Count Summary For Delivery Group	Machine Not Functional Connection Failures	integer	The number of connection failures with the 'MachineNotFunctional' type.
Citrix XenDesktop Delivery Group	Connection Failure Count Summary For Delivery Group	Maintenance Mode Connection Failures	integer	The number of connection failures with the 'MaintenanceMode' type.
Citrix XenDesktop Delivery Group	Connection Failure Count Summary For Delivery Group	No Desktop Available Connection Failures	integer	The number of connection failures with the 'NoDesktopAvailable' type.

Resource Kind	Resource Group	Resource Attribute	Attribute Type	Attribute Description
Citrix XenDesktop Delivery Group	Connection Failure Count Summary For Delivery Group	No Machine Available Connection Failures	integer	The number of connection failures with the 'NoMachineAvailable' type.
Citrix XenDesktop Delivery Group	Connection Failure Count Summary For Delivery Group	No Session To Reconnect Connection Failures	integer	The number of connection failures with the 'NoSessionToReconnect' type.
Citrix XenDesktop Delivery Group	Connection Failure Count Summary For Delivery Group	Other Connection Failures	integer	The number of connection failures with the 'Other' type.
Citrix XenDesktop Delivery Group	Connection Failure Count Summary For Delivery Group	Refused Connection Failures	integer	The number of connection failures with the 'Refused' type.
Citrix XenDesktop Delivery Group	Connection Failure Count Summary For Delivery Group	Registration Timeout Connection Failures	integer	The number of connection failures with the 'RegistrationTimeout' type.
Citrix XenDesktop Delivery Group	Connection Failure Count Summary For Delivery Group	Resource Unavailable Connection Failures	integer	The number of connection failures with the 'ResourceUnavailable' type.
Citrix XenDesktop Delivery Group	Connection Failure Count Summary For Delivery Group	Session Limit Reached Connection Failures	integer	The number of connection failures with the 'SessionLimitReached' type.
Citrix XenDesktop Delivery Group	Connection Failure Count Summary For Delivery Group	Session Preparation Connection Failures	integer	The number of connection failures with the 'SessionPreparation' type.
Citrix XenDesktop Delivery Group	Connection Failure Count Summary For Delivery Group	Spin Up Failed Connection Failures	integer	The number of connection failures with the 'SpinUpFailed' type.
Citrix XenDesktop Delivery Group	Connection Failure Count Summary For Delivery Group	Ticketing Connection Failures	integer	The number of connection failures with the 'Ticketing' type.
Citrix XenDesktop Delivery Group	Connection Failure Count Summary For Delivery Group	Total Connection Failures	integer	The total number of connections failures.

Resource Kind	Resource Group	Resource Attribute	Attribute Type	Attribute Description
Citrix XenDesktop Delivery Group	Connection Failure Count Summary For Delivery Group	Uncategorized Connection Failures	integer	The number of connection failures with the 'None' type.
Citrix XenDesktop Delivery Group	Connection Failure Count Summary For Delivery Group	Unknown Connection Failures	integer	The number of connection failures with the 'Unknown' type.
Citrix XenDesktop Delivery Group	Connection Summary For Delivery Group	Average Authentication Duration	float	The average amount of time for a connection to spend in the Authentication segment of the connection process.
Citrix XenDesktop Delivery Group	Connection Summary For Delivery Group	Average Authentication Duration	float	The average amount of time for a connection to spend in the Authentication segment of the connection process.
Citrix XenDesktop Delivery Group	Connection Summary For Delivery Group	Average Brokering Duration	float	The average amount of time for a connection to spend in the Brokering segment of the connection process.
Citrix XenDesktop Delivery Group	Connection Summary For Delivery Group	Average Brokering Duration	float	The average amount of time for a connection to spend in the Brokering segment of the connection process.
Citrix XenDesktop Delivery Group	Connection Summary For Delivery Group	Average Group Policy Duration	float	The average amount of time for a connection to spend in the Group Policy segment of the connection process.
Citrix XenDesktop Delivery Group	Connection Summary For Delivery Group	Average Group Policy Duration	float	The average amount of time for a connection to spend in the Group Policy segment of the connection process.
Citrix XenDesktop Delivery Group	Connection Summary For Delivery Group	Average HDX Duration	float	The average amount of time for a connection to spend in the HDX segment of the connection process.
Citrix XenDesktop Delivery Group	Connection Summary For Delivery Group	Average HDX Duration	float	The average amount of time for a connection to spend in the HDX segment of the connection process.
Citrix XenDesktop Delivery Group	Connection Summary For Delivery Group	Average Interactive Duration	float	The average amount of time for a connection to spend in the Interactive segment of the connection process.
Citrix XenDesktop Delivery Group	Connection Summary For Delivery Group	Average Interactive Duration	float	The average amount of time for a connection to spend in the Interactive segment of the connection process.
Citrix XenDesktop Delivery Group	Connection Summary For Delivery Group	Average Log On Duration	float	The average amount of time for a connection to spend in the Log On segment of the connection process.
Citrix XenDesktop Delivery Group	Connection Summary For Delivery Group	Average Log On Duration	float	The average amount of time for a connection to spend in the Log On segment of the connection process.

Resource Kind	Resource Group	Resource Attribute	Attribute Type	Attribute Description
Citrix XenDesktop Delivery Group	Connection Summary For Delivery Group	Average Log On Scripts Duration	float	The average amount of time for a connection to spend in the Log On Scripts segment of the connection process.
Citrix XenDesktop Delivery Group	Connection Summary For Delivery Group	Average Log On Scripts Duration	float	The average amount of time for a connection to spend in the Log On Scripts segment of the connection process.
Citrix XenDesktop Delivery Group	Connection Summary For Delivery Group	Average Profile Load Duration	float	The average amount of time for a connection to spend in the Profile Load segment of the connection process.
Citrix XenDesktop Delivery Group	Connection Summary For Delivery Group	Average Profile Load Duration	float	The average amount of time for a connection to spend in the Profile Load segment of the connection process.
Citrix XenDesktop Delivery Group	Connection Summary For Delivery Group	Average VM Start Duration	float	The average amount of time for a connection to spend in the VM Start segment of the connection process.
Citrix XenDesktop Delivery Group	Connection Summary For Delivery Group	Average VM Start Duration	float	The average amount of time for a connection to spend in the VM Start segment of the connection process.
Citrix XenDesktop Delivery Group	Connection Summary For Delivery Group	Connection Count	integer	The number of connections associated with the resource.
Citrix XenDesktop Delivery Group	Connection Summary For Delivery Group	New Connection Count	integer	The number of new connections associated with the resource.
Citrix XenDesktop Delivery Group	Connection Summary For Delivery Group	Secure ICA Connection Count	integer	The number of secure ICA connections associated with the resource.
Citrix XenDesktop Delivery Group	Relationships	Application Children	string	List of child Application resources
Citrix XenDesktop Delivery Group	Relationships	Desktop Children	string	List of child Desktop resources
Citrix XenDesktop Delivery Group	Relationships	Site Parents	string	List of parent Site resources
Citrix XenDesktop Delivery Group	Relationships	VDA Machine Children	string	List of child VDA Machine resources
Citrix XenDesktop Delivery Group	Resource Counts	VDA Machine Count	integer	The number of VDAs in the Delivery Group.
Citrix XenDesktop Delivery Group	Resource Information	Delivery Type	string	The Delivery Type of the Delivery Group.

Resource Kind	Resource Group	Resource Attribute	Attribute Type	Attribute Description
Citrix XenDesktop Delivery Group	Resource Information	Desktop Kind	string	The Desktop Kind of the Delivery Group.
Citrix XenDesktop Delivery Group	Resource Information	Is Remote PC	string	The Is Remote PC of the Delivery Group.
Citrix XenDesktop Delivery Group	Resource Information	Lifecycle State	string	The Lifecycle State of the Delivery Group.
Citrix XenDesktop Delivery Group	Resource Information	Name	string	The Name of the Delivery Group.
Citrix XenDesktop Delivery Group	Resource Information	Session Support	string	The Session Support of the Delivery Group.
Citrix XenDesktop Delivery Group	Session Connection State Count Summary For Delivery Group	Active Session Count	integer	The number of active sessions associated with the resource.
Citrix XenDesktop Delivery Group	Session Connection State Count Summary For Delivery Group	Connected Session Count	integer	The number of connected sessions associated with the resource.
Citrix XenDesktop Delivery Group	Session Connection State Count Summary For Delivery Group	Disconnected Session Count	integer	The number of disconnected sessions associated with the resource.
Citrix XenDesktop Delivery Group	Session Connection State Count Summary For Delivery Group	Non Brokered Session Count	integer	The number of non-brokered sessions associated with the resource.
Citrix XenDesktop Delivery Group	Session Connection State Count Summary For Delivery Group	Other Session Count	integer	The number of 'other' sessions associated with the resource
Citrix XenDesktop Delivery Group	Session Connection State Count Summary For Delivery Group	Pending Session Count	integer	The number of pending sessions associated with the resource.

Resource Kind	Resource Group	Resource Attribute	Attribute Type	Attribute Description
Citrix XenDesktop Delivery Group	Session Connection State Count Summary For Delivery Group	Preparing Session Session Count	integer	The number of sessions being prepared that are associated with the resource.
Citrix XenDesktop Delivery Group	Session Connection State Count Summary For Delivery Group	Reconnecting Session Count	integer	The number of reconnecting sessions associated with the resource.
Citrix XenDesktop Delivery Group	Session Connection State Count Summary For Delivery Group	Terminated Session Count	integer	The number of terminated sessions associated with the resource.
Citrix XenDesktop Delivery Group	Session Connection State Count Summary For Delivery Group	Unknown Session Count	integer	The number of sessions in an unknown state that are associated with the resource.
Citrix XenDesktop Delivery Group	Session Count Summary For Delivery Group	Anonymous Session Count	integer	The number of anonymous sessions associated with the resource.
Citrix XenDesktop Delivery Group	Session Count Summary For Delivery Group	Application Session Count	integer	The number of application sessions associated with the resource.
Citrix XenDesktop Delivery Group	Session Count Summary For Delivery Group	Desktop Session Count	integer	The number of desktop sessions associated with the resource.
Citrix XenDesktop Delivery Group	Session Count Summary For Delivery Group	Peak Concurrent Session Count	integer	The peak concurrent sessions associated with the resource.
Citrix XenDesktop Delivery Group	Session Count Summary For Delivery Group	Total Session Count	integer	The total number of sessions associated with the resource
Citrix XenDesktop Desktop	Connection Failure Count Summary For Desktop	Active Session Reconnect Disabled Connection Failures	integer	The number of connection failures with the 'ActiveSessionReconnectDisabled' type.
Citrix XenDesktop Desktop	Connection Failure Count Summary For Desktop	Application Disabled Connection Failures	integer	The number of connection failures with the 'ApplicationDisabled' type.

Resource Kind	Resource Group	Resource Attribute	Attribute Type	Attribute Description
Citrix XenDesktop Desktop	Connection Failure Count Summary For Desktop	Configuration Set Failure Connection Failures	integer	The number of connection failures with the 'ConfigurationSetFailure' type.
Citrix XenDesktop Desktop	Connection Failure Count Summary For Desktop	Connection Timeout Failures	integer	The number of connection failures with the 'ConnectionTimeout' type.
Citrix XenDesktop Desktop	Connection Failure Count Summary For Desktop	Disallowed Protocol Connection Failures	integer	The number of connection failures with the 'DisallowedProtocol' type.
Citrix XenDesktop Desktop	Connection Failure Count Summary For Desktop	General Fail Connection Failures	integer	The number of connection failures with the 'GeneralFail' type.
Citrix XenDesktop Desktop	Connection Failure Count Summary For Desktop	License Feature Refused Connection Failures	integer	The number of connection failures with the 'LicenseFeatureRefused' type.
Citrix XenDesktop Desktop	Connection Failure Count Summary For Desktop	Licensing Connection Failures	integer	The number of connection failures with the 'Licensing' type.
Citrix XenDesktop Desktop	Connection Failure Count Summary For Desktop	Machine Not Functional Connection Failures	integer	The number of connection failures with the 'MachineNotFunctional' type.
Citrix XenDesktop Desktop	Connection Failure Count Summary For Desktop	Maintenance Mode Connection Failures	integer	The number of connection failures with the 'MaintenanceMode' type.
Citrix XenDesktop Desktop	Connection Failure Count Summary For Desktop	No Desktop Available Connection Failures	integer	The number of connection failures with the 'NoDesktopAvailable' type.
Citrix XenDesktop Desktop	Connection Failure Count Summary For Desktop	No Machine Available Connection Failures	integer	The number of connection failures with the 'NoMachineAvailable' type.
Citrix XenDesktop Desktop	Connection Failure Count Summary For Desktop	No Session To Reconnect Connection Failures	integer	The number of connection failures with the 'NoSessionToReconnect' type.

Resource Kind	Resource Group	Resource Attribute	Attribute Type	Attribute Description
Citrix XenDesktop Desktop	Connection Failure Count Summary For Desktop	Other Connection Failures	integer	The number of connection failures with the 'Other' type.
Citrix XenDesktop Desktop	Connection Failure Count Summary For Desktop	Refused Connection Failures	integer	The number of connection failures with the 'Refused' type.
Citrix XenDesktop Desktop	Connection Failure Count Summary For Desktop	Registration Timeout Connection Failures	integer	The number of connection failures with the 'RegistrationTimeout' type.
Citrix XenDesktop Desktop	Connection Failure Count Summary For Desktop	Resource Unavailable Connection Failures	integer	The number of connection failures with the 'ResourceUnavailable' type.
Citrix XenDesktop Desktop	Connection Failure Count Summary For Desktop	Session Limit Reached Connection Failures	integer	The number of connection failures with the 'SessionLimitReached' type.
Citrix XenDesktop Desktop	Connection Failure Count Summary For Desktop	Session Preparation Connection Failures	integer	The number of connection failures with the 'SessionPreparation' type.
Citrix XenDesktop Desktop	Connection Failure Count Summary For Desktop	Spin Up Failed Connection Failures	integer	The number of connection failures with the 'SpinUpFailed' type.
Citrix XenDesktop Desktop	Connection Failure Count Summary For Desktop	Ticketing Connection Failures	integer	The number of connection failures with the 'Ticketing' type.
Citrix XenDesktop Desktop	Connection Failure Count Summary For Desktop	Total Connection Failures	integer	The total number of connections failures.
Citrix XenDesktop Desktop	Connection Failure Count Summary For Desktop	Uncategorized Connection Failures	integer	The number of connection failures with the 'None' type.
Citrix XenDesktop Desktop	Connection Failure Count Summary For Desktop	Unknown Connection Failures	integer	The number of connection failures with the 'Unknown' type.

Resource Kind	Resource Group	Resource Attribute	Attribute Type	Attribute Description
Citrix XenDesktop Desktop	Connection Summary For Desktop	Average Authentication Duration	float	The average amount of time for a connection to spend in the Authentication segment of the connection process.
Citrix XenDesktop Desktop	Connection Summary For Desktop	Average Authentication Duration	float	The average amount of time for a connection to spend in the Authentication segment of the connection process.
Citrix XenDesktop Desktop	Connection Summary For Desktop	Average Brokering Duration	float	The average amount of time for a connection to spend in the Brokering segment of the connection process.
Citrix XenDesktop Desktop	Connection Summary For Desktop	Average Brokering Duration	float	The average amount of time for a connection to spend in the Brokering segment of the connection process.
Citrix XenDesktop Desktop	Connection Summary For Desktop	Average Group Policy Duration	float	The average amount of time for a connection to spend in the Group Policy segment of the connection process.
Citrix XenDesktop Desktop	Connection Summary For Desktop	Average Group Policy Duration	float	The average amount of time for a connection to spend in the Group Policy segment of the connection process.
Citrix XenDesktop Desktop	Connection Summary For Desktop	Average HDX Duration	float	The average amount of time for a connection to spend in the HDX segment of the connection process.
Citrix XenDesktop Desktop	Connection Summary For Desktop	Average HDX Duration	float	The average amount of time for a connection to spend in the HDX segment of the connection process.
Citrix XenDesktop Desktop	Connection Summary For Desktop	Average Interactive Duration	float	The average amount of time for a connection to spend in the Interactive segment of the connection process.
Citrix XenDesktop Desktop	Connection Summary For Desktop	Average Interactive Duration	float	The average amount of time for a connection to spend in the Interactive segment of the connection process.
Citrix XenDesktop Desktop	Connection Summary For Desktop	Average Log On Duration	float	The average amount of time for a connection to spend in the Log On segment of the connection process.
Citrix XenDesktop Desktop	Connection Summary For Desktop	Average Log On Duration	float	The average amount of time for a connection to spend in the Log On segment of the connection process.
Citrix XenDesktop Desktop	Connection Summary For Desktop	Average Log On Scripts Duration	float	The average amount of time for a connection to spend in the Log On Scripts segment of the connection process.
Citrix XenDesktop Desktop	Connection Summary For Desktop	Average Log On Scripts Duration	float	The average amount of time for a connection to spend in the Log On Scripts segment of the connection process.
Citrix XenDesktop Desktop	Connection Summary For Desktop	Average Profile Load Duration	float	The average amount of time for a connection to spend in the Profile Load segment of the connection process.

Resource Kind	Resource Group	Resource Attribute	Attribute Type	Attribute Description
Citrix XenDesktop Desktop	Connection Summary For Desktop	Average Profile Load Duration	float	The average amount of time for a connection to spend in the Profile Load segment of the connection process.
Citrix XenDesktop Desktop	Connection Summary For Desktop	Average VM Start Duration	float	The average amount of time for a connection to spend in the VM Start segment of the connection process.
Citrix XenDesktop Desktop	Connection Summary For Desktop	Average VM Start Duration	float	The average amount of time for a connection to spend in the VM Start segment of the connection process.
Citrix XenDesktop Desktop	Connection Summary For Desktop	Connection Count	integer	The number of connections associated with the resource.
Citrix XenDesktop Desktop	Connection Summary For Desktop	New Connection Count	integer	The number of new connections associated with the resource.
Citrix XenDesktop Desktop	Connection Summary For Desktop	Secure ICA Connection Count	integer	The number of secure ICA connections associated with the resource.
Citrix XenDesktop Desktop	Desktop Instance Summary	Average Instance Duration Minutes	float	The average Application/Desktop instance duration associated with the resource.
Citrix XenDesktop Desktop	Desktop Instance Summary	Instance Count	float	The number of Application/Desktop instances associated with the resource.
Citrix XenDesktop Desktop	Relationships	Delivery Group Parents	string	List of parent Delivery Group resources
Citrix XenDesktop Desktop	Relationships	Session Children	string	List of child Session resources
Citrix XenDesktop Desktop	Relationships	VDA Machine Parents	string	List of parent VDA Machine resources
Citrix XenDesktop Desktop	Resource Information	Name	string	The Name of the Desktop.
Citrix XenDesktop Desktop	Session Connection State Count Summary For Desktop	Active Session Count	integer	The number of active sessions associated with the resource.
Citrix XenDesktop Desktop	Session Connection State Count Summary For Desktop	Connected Session Count	integer	The number of connected sessions associated with the resource.

Resource Kind	Resource Group	Resource Attribute	Attribute Type	Attribute Description
Citrix XenDesktop Desktop	Session Connection State Count Summary For Desktop	Disconnected Session Count	integer	The number of disconnected sessions associated with the resource.
Citrix XenDesktop Desktop	Session Connection State Count Summary For Desktop	Non Brokered Session Count	integer	The number of non-brokered sessions associated with the resource.
Citrix XenDesktop Desktop	Session Connection State Count Summary For Desktop	Other Session Count	integer	The number of 'other' sessions associated with the resource
Citrix XenDesktop Desktop	Session Connection State Count Summary For Desktop	Pending Session Count	integer	The number of pending sessions associated with the resource.
Citrix XenDesktop Desktop	Session Connection State Count Summary For Desktop	Preparing Session Count	integer	The number of sessions being prepared that are associated with the resource.
Citrix XenDesktop Desktop	Session Connection State Count Summary For Desktop	Reconnecting Session Count	integer	The number of reconnecting sessions associated with the resource.
Citrix XenDesktop Desktop	Session Connection State Count Summary For Desktop	Terminated Session Count	integer	The number of terminated sessions associated with the resource.
Citrix XenDesktop Desktop	Session Connection State Count Summary For Desktop	Unknown Session Count	integer	The number of sessions in an unknown state that are associated with the resource.
Citrix XenDesktop Desktop	Session Count Summary For Desktop	Anonymous Session Count	integer	The number of anonymous sessions associated with the resource.
Citrix XenDesktop Desktop	Session Count Summary For Desktop	Application Session Count	integer	The number of application sessions associated with the resource.
Citrix XenDesktop Desktop	Session Count Summary For Desktop	Desktop Session Count	integer	The number of desktop sessions associated with the resource.
Citrix XenDesktop Desktop	Session Count Summary For Desktop	Peak Concurrent Session Count	integer	The peak concurrent sessions associated with the resource.

Resource Kind	Resource Group	Resource Attribute	Attribute Type	Attribute Description
Citrix XenDesktop Desktop	Session Count Summary For Desktop	Total Session Count	integer	The total number of sessions associated with the resource
Citrix XenDesktop Hypervisor	Capacity	Load Index Maximum Value (a constant value of 10000 for capacity calculations)	integer	Metric generated with purpose of Load Index Maximum Value (a constant value of 10000 for capacity calculations).
Citrix XenDesktop Hypervisor	Capacity	Session Capacity	float	The session capacity based on the underlying VDA machine(s).
Citrix XenDesktop Hypervisor	Average Load Index Summary For Hypervisor	CPU Load Index	float	The CPU Load Index from the related underlying VDA machine(s).
Citrix XenDesktop Hypervisor	Average Load Index Summary For Hypervisor	Disk Load Index	float	The Disk Load Index from the related underlying VDA machine(s).
Citrix XenDesktop Hypervisor	Average Load Index Summary For Hypervisor	Effective Load Index	float	The Effective Load Index from the related underlying VDA machine(s).
Citrix XenDesktop Hypervisor	Average Load Index Summary For Hypervisor	Memory Load Index	float	The Memory Load Index from the related underlying VDA machine(s).
Citrix XenDesktop Hypervisor	Average Load Index Summary For Hypervisor	Network Load Index*	float	The Network Load Index from the related underlying VDA machine(s).
Citrix XenDesktop Hypervisor	Average Load Index Summary For Hypervisor	Raw CPU Load Index	float	The CPU Load Index from the related underlying VDA machine(s).
Citrix XenDesktop Hypervisor	Average Load Index Summary For Hypervisor	Raw Disk Load Index	float	The Disk Load Index from the related underlying VDA machine(s).
Citrix XenDesktop Hypervisor	Average Load Index Summary For Hypervisor	Raw Effective Load Index	float	The Effective Load Index from the related underlying VDA machine(s).
Citrix XenDesktop Hypervisor	Average Load Index Summary For Hypervisor	Raw Memory Load Index	float	The Memory Load Index from the related underlying VDA machine(s).
Citrix XenDesktop Hypervisor	Average Load Index Summary For Hypervisor	Raw Network Load Index*	float	The Network Load Index from the related underlying VDA machine(s).
Citrix XenDesktop Hypervisor	Average Load Index Summary For Hypervisor	Raw Session Count Load Index	float	The Session Count Load Index from the related underlying VDA machine(s).

Resource Kind	Resource Group	Resource Attribute	Attribute Type	Attribute Description
Citrix XenDesktop Hypervisor	Average Load Index Summary For Hypervisor	Session Count Load Index	float	The Session Count Load Index from the related underlying VDA machine(s).
Citrix XenDesktop Hypervisor	Connection Failure Count Summary For Hypervisor	Active Session Reconnect Disabled Connection Failures	integer	The number of connection failures with the 'ActiveSessionReconnectDisabled' type.
Citrix XenDesktop Hypervisor	Connection Failure Count Summary For Hypervisor	Application Disabled Connection Failures	integer	The number of connection failures with the 'ApplicationDisabled' type.
Citrix XenDesktop Hypervisor	Connection Failure Count Summary For Hypervisor	Configuration Set Failure Connection Failures	integer	The number of connection failures with the 'ConfigurationSetFailure' type.
Citrix XenDesktop Hypervisor	Connection Failure Count Summary For Hypervisor	Connection Timeout Failures	integer	The number of connection failures with the 'ConnectionTimeout' type.
Citrix XenDesktop Hypervisor	Connection Failure Count Summary For Hypervisor	Disallowed Protocol Connection Failures	integer	The number of connection failures with the 'DisallowedProtocol' type.
Citrix XenDesktop Hypervisor	Connection Failure Count Summary For Hypervisor	General Fail Connection Failures	integer	The number of connection failures with the 'GeneralFail' type.
Citrix XenDesktop Hypervisor	Connection Failure Count Summary For Hypervisor	License Feature Refused Connection Failures	integer	The number of connection failures with the 'LicenseFeatureRefused' type.
Citrix XenDesktop Hypervisor	Connection Failure Count Summary For Hypervisor	Licensing Connection Failures	integer	The number of connection failures with the 'Licensing' type.
Citrix XenDesktop Hypervisor	Connection Failure Count Summary For Hypervisor	Machine Not Functional Connection Failures	integer	The number of connection failures with the 'MachineNotFunctional' type.
Citrix XenDesktop Hypervisor	Connection Failure Count Summary For Hypervisor	Maintenance Mode Connection Failures	integer	The number of connection failures with the 'MaintenanceMode' type.

Resource Kind	Resource Group	Resource Attribute	Attribute Type	Attribute Description
Citrix XenDesktop Hypervisor	Connection Failure Count Summary For Hypervisor	No Desktop Available Connection Failures	integer	The number of connection failures with the 'NoDesktopAvailable' type.
Citrix XenDesktop Hypervisor	Connection Failure Count Summary For Hypervisor	No Machine Available Connection Failures	integer	The number of connection failures with the 'NoMachineAvailable' type.
Citrix XenDesktop Hypervisor	Connection Failure Count Summary For Hypervisor	No Session To Reconnect Connection Failures	integer	The number of connection failures with the 'NoSessionToReconnect' type.
Citrix XenDesktop Hypervisor	Connection Failure Count Summary For Hypervisor	Other Connection Failures	integer	The number of connection failures with the 'Other' type.
Citrix XenDesktop Hypervisor	Connection Failure Count Summary For Hypervisor	Refused Connection Failures	integer	The number of connection failures with the 'Refused' type.
Citrix XenDesktop Hypervisor	Connection Failure Count Summary For Hypervisor	Registration Timeout Connection Failures	integer	The number of connection failures with the 'RegistrationTimeout' type.
Citrix XenDesktop Hypervisor	Connection Failure Count Summary For Hypervisor	Resource Unavailable Connection Failures	integer	The number of connection failures with the 'ResourceUnavailable' type.
Citrix XenDesktop Hypervisor	Connection Failure Count Summary For Hypervisor	Session Limit Reached Connection Failures	integer	The number of connection failures with the 'SessionLimitReached' type.
Citrix XenDesktop Hypervisor	Connection Failure Count Summary For Hypervisor	Session Preparation Connection Failures	integer	The number of connection failures with the 'SessionPreparation' type.
Citrix XenDesktop Hypervisor	Connection Failure Count Summary For Hypervisor	Spin Up Failed Connection Failures	integer	The number of connection failures with the 'SpinUpFailed' type.
Citrix XenDesktop Hypervisor	Connection Failure Count Summary For Hypervisor	Ticketing Connection Failures	integer	The number of connection failures with the 'Ticketing' type.

Resource Kind	Resource Group	Resource Attribute	Attribute Type	Attribute Description
Citrix XenDesktop Hypervisor	Connection Failure Count Summary For Hypervisor	Total Connection Failures	integer	The total number of connections failures.
Citrix XenDesktop Hypervisor	Connection Failure Count Summary For Hypervisor	Uncategorized Connection Failures	integer	The number of connection failures with the 'None' type.
Citrix XenDesktop Hypervisor	Connection Failure Count Summary For Hypervisor	Unknown Connection Failures	integer	The number of connection failures with the 'Unknown' type.
Citrix XenDesktop Hypervisor	Connection Summary For Hypervisor	Average Authentication Duration	float	The average amount of time for a connection to spend in the Authentication segment of the connection process.
Citrix XenDesktop Hypervisor	Connection Summary For Hypervisor	Average Authentication Duration	float	The average amount of time for a connection to spend in the Authentication segment of the connection process.
Citrix XenDesktop Hypervisor	Connection Summary For Hypervisor	Average Brokering Duration	float	The average amount of time for a connection to spend in the Brokering segment of the connection process.
Citrix XenDesktop Hypervisor	Connection Summary For Hypervisor	Average Brokering Duration	float	The average amount of time for a connection to spend in the Brokering segment of the connection process.
Citrix XenDesktop Hypervisor	Connection Summary For Hypervisor	Average Group Policy Duration	float	The average amount of time for a connection to spend in the Group Policy segment of the connection process.
Citrix XenDesktop Hypervisor	Connection Summary For Hypervisor	Average Group Policy Duration	float	The average amount of time for a connection to spend in the Group Policy segment of the connection process.
Citrix XenDesktop Hypervisor	Connection Summary For Hypervisor	Average HDX Duration	float	The average amount of time for a connection to spend in the HDX segment of the connection process.
Citrix XenDesktop Hypervisor	Connection Summary For Hypervisor	Average HDX Duration	float	The average amount of time for a connection to spend in the HDX segment of the connection process.
Citrix XenDesktop Hypervisor	Connection Summary For Hypervisor	Average Interactive Duration	float	The average amount of time for a connection to spend in the Interactive segment of the connection process.
Citrix XenDesktop Hypervisor	Connection Summary For Hypervisor	Average Interactive Duration	float	The average amount of time for a connection to spend in the Interactive segment of the connection process.
Citrix XenDesktop Hypervisor	Connection Summary For Hypervisor	Average Log On Duration	float	The average amount of time for a connection to spend in the Log On segment of the connection process.

Resource Kind	Resource Group	Resource Attribute	Attribute Type	Attribute Description
Citrix XenDesktop Hypervisor	Connection Summary For Hypervisor	Average Log On Duration	float	The average amount of time for a connection to spend in the Log On segment of the connection process.
Citrix XenDesktop Hypervisor	Connection Summary For Hypervisor	Average Log On Scripts Duration	float	The average amount of time for a connection to spend in the Log On Scripts segment of the connection process.
Citrix XenDesktop Hypervisor	Connection Summary For Hypervisor	Average Log On Scripts Duration	float	The average amount of time for a connection to spend in the Log On Scripts segment of the connection process.
Citrix XenDesktop Hypervisor	Connection Summary For Hypervisor	Average Profile Load Duration	float	The average amount of time for a connection to spend in the Profile Load segment of the connection process.
Citrix XenDesktop Hypervisor	Connection Summary For Hypervisor	Average Profile Load Duration	float	The average amount of time for a connection to spend in the Profile Load segment of the connection process.
Citrix XenDesktop Hypervisor	Connection Summary For Hypervisor	Average VM Start Duration	float	The average amount of time for a connection to spend in the VM Start segment of the connection process.
Citrix XenDesktop Hypervisor	Connection Summary For Hypervisor	Average VM Start Duration	float	The average amount of time for a connection to spend in the VM Start segment of the connection process.
Citrix XenDesktop Hypervisor	Connection Summary For Hypervisor	Connection Count	integer	The number of connections associated with the resource.
Citrix XenDesktop Hypervisor	Connection Summary For Hypervisor	New Connection Count	integer	The number of new connections associated with the resource.
Citrix XenDesktop Hypervisor	Connection Summary For Hypervisor	Secure ICA Connection Count	integer	The number of secure ICA connections associated with the resource.
Citrix XenDesktop Hypervisor	Relationships	Site Parents	string	List of parent Site resources
Citrix XenDesktop Hypervisor	Relationships	VDA Machine Children	string	List of child VDA Machine resources
Citrix XenDesktop Hypervisor	Resource Information	Lifecycle State	string	The Lifecycle State of the Hypervisor.
Citrix XenDesktop Hypervisor	Resource Information	Name	string	The Name of the Hypervisor.

Resource Kind	Resource Group	Resource Attribute	Attribute Type	Attribute Description
Citrix XenDesktop Hypervisor	Session Connection State Count Summary For Hypervisor	Active Session Count	integer	The number of active sessions associated with the resource.
Citrix XenDesktop Hypervisor	Session Connection State Count Summary For Hypervisor	Connected Session Count	integer	The number of connected sessions associated with the resource.
Citrix XenDesktop Hypervisor	Session Connection State Count Summary For Hypervisor	Disconnected Session Count	integer	The number of disconnected sessions associated with the resource.
Citrix XenDesktop Hypervisor	Session Connection State Count Summary For Hypervisor	Non Brokered Session Session Count	integer	The number of non-brokered sessions associated with the resource.
Citrix XenDesktop Hypervisor	Session Connection State Count Summary For Hypervisor	Other Session Count	integer	The number of 'other' sessions associated with the resource
Citrix XenDesktop Hypervisor	Session Connection State Count Summary For Hypervisor	Pending Session Count	integer	The number of pending sessions associated with the resource.
Citrix XenDesktop Hypervisor	Session Connection State Count Summary For Hypervisor	Preparing Session Session Count	integer	The number of sessions being prepared that are associated with the resource.
Citrix XenDesktop Hypervisor	Session Connection State Count Summary For Hypervisor	Reconnecting Session Count	integer	The number of reconnecting sessions associated with the resource.
Citrix XenDesktop Hypervisor	Session Connection State Count Summary For Hypervisor	Terminated Session Count	integer	The number of terminated sessions associated with the resource.
Citrix XenDesktop Hypervisor	Session Connection State Count Summary For Hypervisor	Unknown Session Count	integer	The number of sessions in an unknown state that are associated with the resource.
Citrix XenDesktop Hypervisor	Session Count Summary For Hypervisor	Anonymous Session Count	integer	The number of anonymous sessions associated with the resource.
Citrix XenDesktop Hypervisor	Session Count Summary For Hypervisor	Application Session Count	integer	The number of application sessions associated with the resource.

Resource Kind	Resource Group	Resource Attribute	Attribute Type	Attribute Description
Citrix XenDesktop Hypervisor	Session Count Summary For Hypervisor	Desktop Session Count	integer	The number of desktop sessions associated with the resource.
Citrix XenDesktop Hypervisor	Session Count Summary For Hypervisor	Peak Concurrent Session Count	integer	The peak concurrent sessions associated with the resource.
Citrix XenDesktop Hypervisor	Session Count Summary For Hypervisor	Total Session Count	integer	The total number of sessions associated with the resource
Citrix XenDesktop Site	Capacity	Load Index Maximum Value (a constant value of 10000 for capacity calculations)	integer	Metric generated with purpose of Load Index Maximum Value (a constant value of 10000 for capacity calculations).
Citrix XenDesktop Site	Capacity	Session Capacity	float	The session capacity based on the underlying VDA machine(s).
Citrix XenDesktop Site	Average Load Index Summary For Site	CPU Load Index	float	The CPU Load Index from the related underlying VDA machine(s).
Citrix XenDesktop Site	Average Load Index Summary For Site	Disk Load Index	float	The Disk Load Index from the related underlying VDA machine(s).
Citrix XenDesktop Site	Average Load Index Summary For Site	Effective Load Index	float	The Effective Load Index from the related underlying VDA machine(s).
Citrix XenDesktop Site	Average Load Index Summary For Site	Memory Load Index	float	The Memory Load Index from the related underlying VDA machine(s).
Citrix XenDesktop Site	Average Load Index Summary For Site	Network Load Index*	float	The Network Load Index from the related underlying VDA machine(s).
Citrix XenDesktop Site	Average Load Index Summary For Site	Raw CPU Load Index	float	The CPU Load Index from the related underlying VDA machine(s).
Citrix XenDesktop Site	Average Load Index Summary For Site	Raw Disk Load Index	float	The Disk Load Index from the related underlying VDA machine(s).
Citrix XenDesktop Site	Average Load Index Summary For Site	Raw Effective Load Index	float	The Effective Load Index from the related underlying VDA machine(s).
Citrix XenDesktop Site	Average Load Index Summary For Site	Raw Memory Load Index	float	The Memory Load Index from the related underlying VDA machine(s).

Resource Kind	Resource Group	Resource Attribute	Attribute Type	Attribute Description
Citrix XenDesktop Site	Average Load Index Summary For Site	Raw Network Load Index*	float	The Network Load Index from the related underlying VDA machine(s).
Citrix XenDesktop Site	Average Load Index Summary For Site	Raw Session Count Load Index	float	The Session Count Load Index from the related underlying VDA machine(s).
Citrix XenDesktop Site	Average Load Index Summary For Site	Session Count Load Index	float	The Session Count Load Index from the related underlying VDA machine(s).
Citrix XenDesktop Site	Connection Failure Count Summary For Site	Active Session Reconnect Disabled Connection Failures	integer	The number of connection failures with the 'ActiveSessionReconnectDisabled' type.
Citrix XenDesktop Site	Connection Failure Count Summary For Site	Application Disabled Connection Failures	integer	The number of connection failures with the 'ApplicationDisabled' type.
Citrix XenDesktop Site	Connection Failure Count Summary For Site	Configuration Set Failure Connection Failures	integer	The number of connection failures with the 'ConfigurationSetFailure' type.
Citrix XenDesktop Site	Connection Failure Count Summary For Site	Connection Timeout Failures	integer	The number of connection failures with the 'ConnectionTimeout' type.
Citrix XenDesktop Site	Connection Failure Count Summary For Site	Disallowed Protocol Connection Failures	integer	The number of connection failures with the 'DisallowedProtocol' type.
Citrix XenDesktop Site	Connection Failure Count Summary For Site	General Fail Connection Failures	integer	The number of connection failures with the 'GeneralFail' type.
Citrix XenDesktop Site	Connection Failure Count Summary For Site	License Feature Refused Connection Failures	integer	The number of connection failures with the 'LicenseFeatureRefused' type.
Citrix XenDesktop Site	Connection Failure Count Summary For Site	Licensing Connection Failures	integer	The number of connection failures with the 'Licensing' type.
Citrix XenDesktop Site	Connection Failure Count Summary For Site	Machine Not Functional Connection Failures	integer	The number of connection failures with the 'MachineNotFunctional' type.
Citrix XenDesktop Site	Connection Failure Count Summary For Site	Maintenance Mode Connection Failures	integer	The number of connection failures with the 'MaintenanceMode' type.

Resource Kind	Resource Group	Resource Attribute	Attribute Type	Attribute Description
Citrix XenDesktop Site	Connection Failure Count Summary For Site	No Desktop Available Connection Failures	integer	The number of connection failures with the 'NoDesktopAvailable' type.
Citrix XenDesktop Site	Connection Failure Count Summary For Site	No Machine Available Connection Failures	integer	The number of connection failures with the 'NoMachineAvailable' type.
Citrix XenDesktop Site	Connection Failure Count Summary For Site	No Session To Reconnect Connection Failures	integer	The number of connection failures with the 'NoSessionToReconnect' type.
Citrix XenDesktop Site	Connection Failure Count Summary For Site	Other Connection Failures	integer	The number of connection failures with the 'Other' type.
Citrix XenDesktop Site	Connection Failure Count Summary For Site	Refused Connection Failures	integer	The number of connection failures with the 'Refused' type.
Citrix XenDesktop Site	Connection Failure Count Summary For Site	Registration Timeout Connection Failures	integer	The number of connection failures with the 'RegistrationTimeout' type.
Citrix XenDesktop Site	Connection Failure Count Summary For Site	Resource Unavailable Connection Failures	integer	The number of connection failures with the 'ResourceUnavailable' type.
Citrix XenDesktop Site	Connection Failure Count Summary For Site	Session Limit Reached Connection Failures	integer	The number of connection failures with the 'SessionLimitReached' type.
Citrix XenDesktop Site	Connection Failure Count Summary For Site	Session Preparation Connection Failures	integer	The number of connection failures with the 'SessionPreparation' type.
Citrix XenDesktop Site	Connection Failure Count Summary For Site	Spin Up Failed Connection Failures	integer	The number of connection failures with the 'SpinUpFailed' type.
Citrix XenDesktop Site	Connection Failure Count Summary For Site	Ticketing Connection Failures	integer	The number of connection failures with the 'Ticketing' type.
Citrix XenDesktop Site	Connection Failure Count Summary For Site	Total Connection Failures	integer	The total number of connections failures.
Citrix XenDesktop Site	Connection Failure Count Summary For Site	Uncategorized Connection Failures	integer	The number of connection failures with the 'None' type.

Resource Kind	Resource Group	Resource Attribute	Attribute Type	Attribute Description
Citrix XenDesktop Site	Connection Failure Count Summary For Site	Unknown Connection Failures	integer	The number of connection failures with the 'Unknown' type.
Citrix XenDesktop Site	Connection Summary For Site	Average Authentication Duration	float	The average amount of time for a connection to spend in the Authentication segment of the connection process.
Citrix XenDesktop Site	Connection Summary For Site	Average Authentication Duration	float	The average amount of time for a connection to spend in the Authentication segment of the connection process.
Citrix XenDesktop Site	Connection Summary For Site	Average Brokering Duration	float	The average amount of time for a connection to spend in the Brokering segment of the connection process.
Citrix XenDesktop Site	Connection Summary For Site	Average Brokering Duration	float	The average amount of time for a connection to spend in the Brokering segment of the connection process.
Citrix XenDesktop Site	Connection Summary For Site	Average Group Policy Duration	float	The average amount of time for a connection to spend in the Group Policy segment of the connection process.
Citrix XenDesktop Site	Connection Summary For Site	Average Group Policy Duration	float	The average amount of time for a connection to spend in the Group Policy segment of the connection process.
Citrix XenDesktop Site	Connection Summary For Site	Average HDX Duration	float	The average amount of time for a connection to spend in the HDX segment of the connection process.
Citrix XenDesktop Site	Connection Summary For Site	Average HDX Duration	float	The average amount of time for a connection to spend in the HDX segment of the connection process.
Citrix XenDesktop Site	Connection Summary For Site	Average Interactive Duration	float	The average amount of time for a connection to spend in the Interactive segment of the connection process.
Citrix XenDesktop Site	Connection Summary For Site	Average Interactive Duration	float	The average amount of time for a connection to spend in the Interactive segment of the connection process.
Citrix XenDesktop Site	Connection Summary For Site	Average Log On Duration	float	The average amount of time for a connection to spend in the Log On segment of the connection process.
Citrix XenDesktop Site	Connection Summary For Site	Average Log On Duration	float	The average amount of time for a connection to spend in the Log On segment of the connection process.
Citrix XenDesktop Site	Connection Summary For Site	Average Log On Scripts Duration	float	The average amount of time for a connection to spend in the Log On Scripts segment of the connection process.
Citrix XenDesktop Site	Connection Summary For Site	Average Log On Scripts Duration	float	The average amount of time for a connection to spend in the Log On Scripts segment of the connection process.

Resource Kind	Resource Group	Resource Attribute	Attribute Type	Attribute Description
Citrix XenDesktop Site	Connection Summary For Site	Average Profile Load Duration	float	The average amount of time for a connection to spend in the Profile Load segment of the connection process.
Citrix XenDesktop Site	Connection Summary For Site	Average Profile Load Duration	float	The average amount of time for a connection to spend in the Profile Load segment of the connection process.
Citrix XenDesktop Site	Connection Summary For Site	Average VM Start Duration	float	The average amount of time for a connection to spend in the VM Start segment of the connection process.
Citrix XenDesktop Site	Connection Summary For Site	Average VM Start Duration	float	The average amount of time for a connection to spend in the VM Start segment of the connection process.
Citrix XenDesktop Site	Connection Summary For Site	Connection Count	integer	The number of connections associated with the resource.
Citrix XenDesktop Site	Connection Summary For Site	New Connection Count	integer	The number of new connections associated with the resource.
Citrix XenDesktop Site	Connection Summary For Site	Secure ICA Connection Count	integer	The number of secure ICA connections associated with the resource.
Citrix XenDesktop Site	Relationships	Catalog Children	string	List of child Catalog resources
Citrix XenDesktop Site	Relationships	DDC Machine Children	string	List of child DDC Machine resources
Citrix XenDesktop Site	Relationships	Delivery Group Children	string	List of child Delivery Group resources
Citrix XenDesktop Site	Relationships	Hypervisor Children	string	List of child Hypervisor resources
Citrix XenDesktop Site	Relationships	Session Children	string	List of child Session resources
Citrix XenDesktop Site	Resource Counts	Application Count	integer	The number of Application in the Site.
Citrix XenDesktop Site	Resource Counts	Catalog Count	integer	The number of Catalog in the Site.
Citrix XenDesktop Site	Resource Counts	DDC Machine Count	integer	The number of DdcMachine in the Site.

Resource Kind	Resource Group	Resource Attribute	Attribute Type	Attribute Description
Citrix XenDesktop Site	Resource Counts	Delivery Group Count	integer	The number of Delivery Groups in the Site.
Citrix XenDesktop Site	Resource Counts	Desktop Count	integer	The number of Desktops in the Site.
Citrix XenDesktop Site	Resource Counts	Dual Role Machine Count	integer	The number of machines with the dual-role (DDC and VDA) in the Site.
Citrix XenDesktop Site	Resource Counts	Hypervisor Count	integer	The number of Hypervisor connections in the Site.
Citrix XenDesktop Site	Resource Counts	Machine Count	integer	The number of VDA or DDC machines in the Site.
Citrix XenDesktop Site	Resource Counts	VDA Machine Count	integer	The number of VDA machines in the Site.
Citrix XenDesktop Site	Resource Information	Name	string	The Name of the Site.
Citrix XenDesktop Site	Session Connection State Count Summary For Site	Active Session Count	integer	The number of active sessions associated with the resource.
Citrix XenDesktop Site	Session Connection State Count Summary For Site	Connected Session Count	integer	The number of connected sessions associated with the resource.
Citrix XenDesktop Site	Session Connection State Count Summary For Site	Disconnected Session Count	integer	The number of disconnected sessions associated with the resource.
Citrix XenDesktop Site	Session Connection State Count Summary For Site	Non Brokered Session Count	integer	The number of non-brokered sessions associated with the resource.
Citrix XenDesktop Site	Session Connection State Count Summary For Site	Other Session Count	integer	The number of 'other' sessions associated with the resource
Citrix XenDesktop Site	Session Connection State Count Summary For Site	Pending Session Count	integer	The number of pending sessions associated with the resource.

Resource Kind	Resource Group	Resource Attribute	Attribute Type	Attribute Description
Citrix XenDesktop Site	Session Connection State Count Summary For Site	Preparing Session Session Count	integer	The number of sessions being prepared that are associated with the resource.
Citrix XenDesktop Site	Session Connection State Count Summary For Site	Reconnecting Session Count	integer	The number of reconnecting sessions associated with the resource.
Citrix XenDesktop Site	Session Connection State Count Summary For Site	Terminated Session Count	integer	The number of terminated sessions associated with the resource.
Citrix XenDesktop Site	Session Connection State Count Summary For Site	Unknown Session Count	integer	The number of sessions in an unknown state that are associated with the resource.
Citrix XenDesktop Site	Session Count Summary For Site	Anonymous Session Count	integer	The number of anonymous sessions associated with the resource.
Citrix XenDesktop Site	Session Count Summary For Site	Application Session Count	integer	The number of application sessions associated with the resource.
Citrix XenDesktop Site	Session Count Summary For Site	Desktop Session Count	integer	The number of desktop sessions associated with the resource.
Citrix XenDesktop Site	Session Count Summary For Site	Peak Concurrent Session Count	integer	The peak concurrent sessions associated with the resource.
Citrix XenDesktop Site	Session Count Summary For Site	Total Session Count	integer	The total number of sessions associated with the resource
Citrix XenDesktop Site	Sql Server Database	Initial Catalog	string	The initial catalog of the database server for the Site.
Citrix XenDesktop Site	Sql Server Database	Site Database Server	string	The name of the database server for the Site.
Citrix XenDesktop User	Connection Summary For User	Average Authentication Duration	float	The average amount of time for a connection to spend in the Authentication segment of the connection process.
Citrix XenDesktop User	Connection Summary For User	Average Authentication Duration	float	The average amount of time for a connection to spend in the Authentication segment of the connection process.

Resource Kind	Resource Group	Resource Attribute	Attribute Type	Attribute Description
Citrix XenDesktop User	Connection Summary For User	Average Brokering Duration	float	The average amount of time for a connection to spend in the Brokering segment of the connection process.
Citrix XenDesktop User	Connection Summary For User	Average Brokering Duration	float	The average amount of time for a connection to spend in the Brokering segment of the connection process.
Citrix XenDesktop User	Connection Summary For User	Average Group Policy Duration	float	The average amount of time for a connection to spend in the Group Policy segment of the connection process.
Citrix XenDesktop User	Connection Summary For User	Average Group Policy Duration	float	The average amount of time for a connection to spend in the Group Policy segment of the connection process.
Citrix XenDesktop User	Connection Summary For User	Average HDX Duration	float	The average amount of time for a connection to spend in the HDX segment of the connection process.
Citrix XenDesktop User	Connection Summary For User	Average HDX Duration	float	The average amount of time for a connection to spend in the HDX segment of the connection process.
Citrix XenDesktop User	Connection Summary For User	Average Interactive Duration	float	The average amount of time for a connection to spend in the Interactive segment of the connection process.
Citrix XenDesktop User	Connection Summary For User	Average Interactive Duration	float	The average amount of time for a connection to spend in the Interactive segment of the connection process.
Citrix XenDesktop User	Connection Summary For User	Average Log On Duration	float	The average amount of time for a connection to spend in the Log On segment of the connection process.
Citrix XenDesktop User	Connection Summary For User	Average Log On Duration	float	The average amount of time for a connection to spend in the Log On segment of the connection process.
Citrix XenDesktop User	Connection Summary For User	Average Log On Scripts Duration	float	The average amount of time for a connection to spend in the Log On Scripts segment of the connection process.
Citrix XenDesktop User	Connection Summary For User	Average Log On Scripts Duration	float	The average amount of time for a connection to spend in the Log On Scripts segment of the connection process.
Citrix XenDesktop User	Connection Summary For User	Average Profile Load Duration	float	The average amount of time for a connection to spend in the Profile Load segment of the connection process.
Citrix XenDesktop User	Connection Summary For User	Average Profile Load Duration	float	The average amount of time for a connection to spend in the Profile Load segment of the connection process.
Citrix XenDesktop User	Connection Summary For User	Average VM Start Duration	float	The average amount of time for a connection to spend in the VM Start segment of the connection process.

Resource Kind	Resource Group	Resource Attribute	Attribute Type	Attribute Description
Citrix XenDesktop User	Connection Summary For User	Average VM Start Duration	float	The average amount of time for a connection to spend in the VM Start segment of the connection process.
Citrix XenDesktop User	Connection Summary For User	Connection Count	integer	The number of connections associated with the resource.
Citrix XenDesktop User	Connection Summary For User	New Connection Count	integer	The number of new connections associated with the resource.
Citrix XenDesktop User	Connection Summary For User	Secure ICA Connection Count	integer	The number of secure ICA connections associated with the resource.
Citrix XenDesktop User	Relationships	Session Children	string	List of child Session resources
Citrix XenDesktop User	Resource Information	Domain	string	The domain of the User.
Citrix XenDesktop User	Resource Information	Full Name	string	The full name of the User.
Citrix XenDesktop User	Resource Information	SID	string	The SID of the User.
Citrix XenDesktop User	Resource Information	UPN	string	The UPN of the User.
Citrix XenDesktop User	Resource Information	User Name	string	The name of the User.
Citrix XenDesktop User	Session Connection State Count Summary For User	Active Session Count	integer	The number of active sessions associated with the resource.
Citrix XenDesktop User	Session Connection State Count Summary For User	Connected Session Count	integer	The number of connected sessions associated with the resource.
Citrix XenDesktop User	Session Connection State Count Summary For User	Disconnected Session Count	integer	The number of disconnected sessions associated with the resource.

Resource Kind	Resource Group	Resource Attribute	Attribute Type	Attribute Description
Citrix XenDesktop User	Session Connection State Count Summary For User	Non Brokered Session Session Count	integer	The number of non-brokered sessions associated with the resource.
Citrix XenDesktop User	Session Connection State Count Summary For User	Other Session Count	integer	The number of 'other' sessions associated with the resource
Citrix XenDesktop User	Session Connection State Count Summary For User	Pending Session Count	integer	The number of pending sessions associated with the resource.
Citrix XenDesktop User	Session Connection State Count Summary For User	Preparing Session Session Count	integer	The number of sessions being prepared that are associated with the resource.
Citrix XenDesktop User	Session Connection State Count Summary For User	Reconnecting Session Count	integer	The number of reconnecting sessions associated with the resource.
Citrix XenDesktop User	Session Connection State Count Summary For User	Terminated Session Count	integer	The number of terminated sessions associated with the resource.
Citrix XenDesktop User	Session Connection State Count Summary For User	Unknown Session Count	integer	The number of sessions in an unknown state that are associated with the resource.
Citrix XenDesktop User	Session Count Summary For User	Anonymous Session Count	integer	The number of anonymous sessions associated with the resource.
Citrix XenDesktop User	Session Count Summary For User	Application Session Count	integer	The number of application sessions associated with the resource.
Citrix XenDesktop User	Session Count Summary For User	Average Session Duration	float	The average duration of sessions associated with the resource.
Citrix XenDesktop User	Session Count Summary For User	Desktop Session Count	integer	The number of desktop sessions associated with the resource.
Citrix XenDesktop User	Session Count Summary For User	Total Session Count	integer	The total number of sessions associated with the resource
Citrix XenDesktop User	Session Count Summary For User	Total Session Duration	integer	The total duration of sessions associated with the resource.

Resource Kind	Resource Group	Resource Attribute	Attribute Type	Attribute Description
Citrix XenDesktop VDA Machine	CPU	Number Of Logical Processors	string	The Number of logical processors of the VDA Machine.
Citrix XenDesktop VDA Machine	Capacity	Load Index Maximum Value (a constant value of 10000 for capacity calculations)	integer	Metric generated with purpose of Load Index Maximum Value (a constant value of 10000 for capacity calculations).
Citrix XenDesktop VDA Machine	Capacity	Session Capacity	float	The session capacity based on the underlying VDA machine(s).
Citrix XenDesktop VDA Machine	Disk	Current Disk Queue Length	string	Number of requests outstanding on the disk at the time the performance data is collected.
Citrix XenDesktop VDA Machine	Disk	Disk Transfers Per Second	string	Rate of read and write operations on the disk in quantity over seconds.
Citrix XenDesktop VDA Machine	Disk	Free Space	string	The number of bytes remaining available on the logical disk of the VDA.
Citrix XenDesktop VDA Machine	Memory	Total Physical Memory	string	The Total size of machine's physical memory in bytes.
Citrix XenDesktop VDA Machine	Connection Failure Count Summary For Machine	Active Session Reconnect Disabled Connection Failures	integer	The number of connection failures with the 'ActiveSessionReconnectDisabled' type.
Citrix XenDesktop VDA Machine	Connection Failure Count Summary For Machine	Application Disabled Connection Failures	integer	The number of connection failures with the 'ApplicationDisabled' type.
Citrix XenDesktop VDA Machine	Connection Failure Count Summary For Machine	Configuration Set Failure Connection Failures	integer	The number of connection failures with the 'ConfigurationSetFailure' type.
Citrix XenDesktop VDA Machine	Connection Failure Count Summary For Machine	Connection Timeout Failures	integer	The number of connection failures with the 'ConnectionTimeout' type.
Citrix XenDesktop VDA Machine	Connection Failure Count Summary For Machine	Disallowed Protocol Connection Failures	integer	The number of connection failures with the 'DisallowedProtocol' type.

Resource Kind	Resource Group	Resource Attribute	Attribute Type	Attribute Description
Citrix XenDesktop VDA Machine	Connection Failure Count Summary For Machine	General Fail Connection Failures	integer	The number of connection failures with the 'GeneralFail' type.
Citrix XenDesktop VDA Machine	Connection Failure Count Summary For Machine	License Feature Refused Connection Failures	integer	The number of connection failures with the 'LicenseFeatureRefused' type.
Citrix XenDesktop VDA Machine	Connection Failure Count Summary For Machine	Licensing Connection Failures	integer	The number of connection failures with the 'Licensing' type.
Citrix XenDesktop VDA Machine	Connection Failure Count Summary For Machine	Machine Not Functional Connection Failures	integer	The number of connection failures with the 'MachineNotFunctional' type.
Citrix XenDesktop VDA Machine	Connection Failure Count Summary For Machine	Maintenance Mode Connection Failures	integer	The number of connection failures with the 'MaintenanceMode' type.
Citrix XenDesktop VDA Machine	Connection Failure Count Summary For Machine	No Desktop Available Connection Failures	integer	The number of connection failures with the 'NoDesktopAvailable' type.
Citrix XenDesktop VDA Machine	Connection Failure Count Summary For Machine	No Machine Available Connection Failures	integer	The number of connection failures with the 'NoMachineAvailable' type.
Citrix XenDesktop VDA Machine	Connection Failure Count Summary For Machine	No Session To Reconnect Connection Failures	integer	The number of connection failures with the 'NoSessionToReconnect' type.
Citrix XenDesktop VDA Machine	Connection Failure Count Summary For Machine	Other Connection Failures	integer	The number of connection failures with the 'Other' type.
Citrix XenDesktop VDA Machine	Connection Failure Count Summary For Machine	Refused Connection Failures	integer	The number of connection failures with the 'Refused' type.
Citrix XenDesktop VDA Machine	Connection Failure Count Summary For Machine	Registration Timeout Connection Failures	integer	The number of connection failures with the 'RegistrationTimeout' type.

Resource Kind	Resource Group	Resource Attribute	Attribute Type	Attribute Description
Citrix XenDesktop VDA Machine	Connection Failure Count Summary For Machine	Resource Unavailable Connection Failures	integer	The number of connection failures with the 'ResourceUnavailable' type.
Citrix XenDesktop VDA Machine	Connection Failure Count Summary For Machine	Session Limit Reached Connection Failures	integer	The number of connection failures with the 'SessionLimitReached' type.
Citrix XenDesktop VDA Machine	Connection Failure Count Summary For Machine	Session Preparation Connection Failures	integer	The number of connection failures with the 'SessionPreparation' type.
Citrix XenDesktop VDA Machine	Connection Failure Count Summary For Machine	Spin Up Failed Connection Failures	integer	The number of connection failures with the 'SpinUpFailed' type.
Citrix XenDesktop VDA Machine	Connection Failure Count Summary For Machine	Ticketing Connection Failures	integer	The number of connection failures with the 'Ticketing' type.
Citrix XenDesktop VDA Machine	Connection Failure Count Summary For Machine	Total Connection Failures	integer	The total number of connections failures.
Citrix XenDesktop VDA Machine	Connection Failure Count Summary For Machine	Uncategorized Connection Failures	integer	The number of connection failures with the 'None' type.
Citrix XenDesktop VDA Machine	Connection Failure Count Summary For Machine	Unknown Connection Failures	integer	The number of connection failures with the 'Unknown' type.
Citrix XenDesktop VDA Machine	Connection Summary For Machine	Average Authentication Duration	float	The average amount of time for a connection to spend in the Authentication segment of the connection process.
Citrix XenDesktop VDA Machine	Connection Summary For Machine	Average Authentication Duration	float	The average amount of time for a connection to spend in the Authentication segment of the connection process.
Citrix XenDesktop VDA Machine	Connection Summary For Machine	Average Brokering Duration	float	The average amount of time for a connection to spend in the Brokering segment of the connection process.
Citrix XenDesktop VDA Machine	Connection Summary For Machine	Average Brokering Duration	float	The average amount of time for a connection to spend in the Brokering segment of the connection process.

Resource Kind	Resource Group	Resource Attribute	Attribute Type	Attribute Description
Citrix XenDesktop VDA Machine	Connection Summary For Machine	Average Group Policy Duration	float	The average amount of time for a connection to spend in the Group Policy segment of the connection process.
Citrix XenDesktop VDA Machine	Connection Summary For Machine	Average Group Policy Duration	float	The average amount of time for a connection to spend in the Group Policy segment of the connection process.
Citrix XenDesktop VDA Machine	Connection Summary For Machine	Average HDX Duration	float	The average amount of time for a connection to spend in the HDX segment of the connection process.
Citrix XenDesktop VDA Machine	Connection Summary For Machine	Average HDX Duration	float	The average amount of time for a connection to spend in the HDX segment of the connection process.
Citrix XenDesktop VDA Machine	Connection Summary For Machine	Average Interactive Duration	float	The average amount of time for a connection to spend in the Interactive segment of the connection process.
Citrix XenDesktop VDA Machine	Connection Summary For Machine	Average Interactive Duration	float	The average amount of time for a connection to spend in the Interactive segment of the connection process.
Citrix XenDesktop VDA Machine	Connection Summary For Machine	Average Log On Duration	float	The average amount of time for a connection to spend in the Log On segment of the connection process.
Citrix XenDesktop VDA Machine	Connection Summary For Machine	Average Log On Duration	float	The average amount of time for a connection to spend in the Log On segment of the connection process.
Citrix XenDesktop VDA Machine	Connection Summary For Machine	Average Log On Scripts Duration	float	The average amount of time for a connection to spend in the Log On Scripts segment of the connection process.
Citrix XenDesktop VDA Machine	Connection Summary For Machine	Average Log On Scripts Duration	float	The average amount of time for a connection to spend in the Log On Scripts segment of the connection process.
Citrix XenDesktop VDA Machine	Connection Summary For Machine	Average Profile Load Duration	float	The average amount of time for a connection to spend in the Profile Load segment of the connection process.
Citrix XenDesktop VDA Machine	Connection Summary For Machine	Average Profile Load Duration	float	The average amount of time for a connection to spend in the Profile Load segment of the connection process.
Citrix XenDesktop VDA Machine	Connection Summary For Machine	Average VM Start Duration	float	The average amount of time for a connection to spend in the VM Start segment of the connection process.
Citrix XenDesktop VDA Machine	Connection Summary For Machine	Average VM Start Duration	float	The average amount of time for a connection to spend in the VM Start segment of the connection process.
Citrix XenDesktop VDA Machine	Connection Summary For Machine	Connection Count	integer	The number of connections associated with the resource.

Resource Kind	Resource Group	Resource Attribute	Attribute Type	Attribute Description
Citrix XenDesktop VDA Machine	Connection Summary For Machine	New Connection Count	integer	The number of new connections associated with the resource.
Citrix XenDesktop VDA Machine	Connection Summary For Machine	Secure ICA Connection Count	integer	The number of secure ICA connections associated with the resource.
Citrix XenDesktop VDA Machine	Load Index Summary For Machine	CPU Load Index	float	The CPU Load Index from the related underlying VDA machine(s).
Citrix XenDesktop VDA Machine	Load Index Summary For Machine	Disk Load Index	float	The Disk Load Index from the related underlying VDA machine(s).
Citrix XenDesktop VDA Machine	Load Index Summary For Machine	Effective Load Index	float	The Effective Load Index from the related underlying VDA machine(s).
Citrix XenDesktop VDA Machine	Load Index Summary For Machine	Memory Load Index	float	The Memory Load Index from the related underlying VDA machine(s).
Citrix XenDesktop VDA Machine	Load Index Summary For Machine	Network Load Index*	float	The Network Load Index from the related underlying VDA machine(s).
Citrix XenDesktop VDA Machine	Load Index Summary For Machine	Raw CPU Load Index	float	The CPU Load Index from the related underlying VDA machine(s).
Citrix XenDesktop VDA Machine	Load Index Summary For Machine	Raw Disk Load Index	float	The Disk Load Index from the related underlying VDA machine(s).
Citrix XenDesktop VDA Machine	Load Index Summary For Machine	Raw Effective Load Index	float	The Effective Load Index from the related underlying VDA machine(s).
Citrix XenDesktop VDA Machine	Load Index Summary For Machine	Raw Memory Load Index	float	The Memory Load Index from the related underlying VDA machine(s).
Citrix XenDesktop VDA Machine	Load Index Summary For Machine	Raw Network Load Index*	float	The Network Load Index from the related underlying VDA machine(s).
Citrix XenDesktop VDA Machine	Load Index Summary For Machine	Raw Session Count Load Index	float	The Session Count Load Index from the related underlying VDA machine(s).
Citrix XenDesktop VDA Machine	Load Index Summary For Machine	Session Count Load Index	float	The Session Count Load Index from the related underlying VDA machine(s).
Citrix XenDesktop VDA Machine	Relationships	AIX Parents	string	List of parent AIX resources

Resource Kind	Resource Group	Resource Attribute	Attribute Type	Attribute Description
Citrix XenDesktop VDA Machine	Relationships	Application Children	string	List of child Application resources
Citrix XenDesktop VDA Machine	Relationships	Catalog Parents	string	List of parent Catalog resources
Citrix XenDesktop VDA Machine	Relationships	Delivery Group Parents	string	List of parent Delivery Group resources
Citrix XenDesktop VDA Machine	Relationships	Desktop Children	string	List of child Desktop resources
Citrix XenDesktop VDA Machine	Relationships	HPUX Parents	string	List of parent HPUX resources
Citrix XenDesktop VDA Machine	Relationships	Hypervisor Parents	string	List of parent Hypervisor resources
Citrix XenDesktop VDA Machine	Relationships	Linux Parents	string	List of parent Linux resources
Citrix XenDesktop VDA Machine	Relationships	Session Children	string	List of child Session resources
Citrix XenDesktop VDA Machine	Relationships	Solaris Parents	string	List of parent Solaris resources
Citrix XenDesktop VDA Machine	Relationships	Virtual Machine Parents	string	List of parent Virtual Machine resources
Citrix XenDesktop VDA Machine	Relationships	Windows Parents	string	List of parent Windows resources
Citrix XenDesktop VDA Machine	Relationships	XenDesktop Container Parents	string	List of parent XenDesktop Container resources
Citrix XenDesktop VDA Machine	Resource Information	Agent Version	string	The Agent Version of the VDA Machine.
Citrix XenDesktop VDA Machine	Resource Information	Catalog ID	string	The Catalog ID associated with the VDA Machine.
Citrix XenDesktop VDA Machine	Resource Information	Controller DNS Name	string	The Controller Dns Name of the VDA Machine.

Resource Kind	Resource Group	Resource Attribute	Attribute Type	Attribute Description
Citrix XenDesktop VDA Machine	Resource Information	Current Power State	string	The Current Power State of the VDA Machine.
Citrix XenDesktop VDA Machine	Resource Information	Current Registration State	string	The Current Registration State of the VDA Machine.
Citrix XenDesktop VDA Machine	Resource Information	Current Session Count	integer	The Current Session Count of the VDA Machine.
Citrix XenDesktop VDA Machine	Resource Information	DNS Name	string	The Dns Name of the VDA Machine.
Citrix XenDesktop VDA Machine	Resource Information	Delivery Group ID	string	The Delivery Group ID of the VDA Machine.
Citrix XenDesktop VDA Machine	Resource Information	Fault State	string	The Fault State of the VDA Machine.
Citrix XenDesktop VDA Machine	Resource Information	Functional Level	string	The Functional Level of the VDA Machine.
Citrix XenDesktop VDA Machine	Resource Information	Hosting Server Name	string	The Hosting Server Name of the VDA Machine.
Citrix XenDesktop VDA Machine	Resource Information	IP Address	string	The IP Address of the VDA Machine.
Citrix XenDesktop VDA Machine	Resource Information	Is Assigned	string	The Is Assigned of the VDA Machine.
Citrix XenDesktop VDA Machine	Resource Information	Is In Maintenance Mode	string	The Is In Maintenance Mode of the VDA Machine.
Citrix XenDesktop VDA Machine	Resource Information	Is Pending Update	string	The Is Pending Update of the VDA Machine.
Citrix XenDesktop VDA Machine	Resource Information	Is Preparing	string	The Is Preparing of the VDA Machine.
Citrix XenDesktop VDA Machine	Resource Information	Last Deregistered Code	string	The Last Deregistered Code of the VDA Machine.
Citrix XenDesktop VDA Machine	Resource Information	Lifecycle State	string	The Lifecycle State of the VDA Machine.

Resource Kind	Resource Group	Resource Attribute	Attribute Type	Attribute Description
Citrix XenDesktop VDA Machine	Resource Information	Machine Role	string	The Machine Role of the VDA Machine.
Citrix XenDesktop VDA Machine	Resource Information	Name	string	The Name of the VDA Machine.
Citrix XenDesktop VDA Machine	Resource Information	OS Type	string	The OS Type of the VDA Machine.
Citrix XenDesktop VDA Machine	Resource Information	Windows Connection Setting	string	The Windows Connection Setting of the VDA Machine.
Citrix XenDesktop VDA Machine	Session Connection State Count Summary For Machine	Active Session Count	integer	The number of active sessions associated with the resource.
Citrix XenDesktop VDA Machine	Session Connection State Count Summary For Machine	Connected Session Count	integer	The number of connected sessions associated with the resource.
Citrix XenDesktop VDA Machine	Session Connection State Count Summary For Machine	Disconnected Session Count	integer	The number of disconnected sessions associated with the resource.
Citrix XenDesktop VDA Machine	Session Connection State Count Summary For Machine	Non Brokered Session Count	integer	The number of non-brokered sessions associated with the resource.
Citrix XenDesktop VDA Machine	Session Connection State Count Summary For Machine	Other Session Count	integer	The number of 'other' sessions associated with the resource
Citrix XenDesktop VDA Machine	Session Connection State Count Summary For Machine	Pending Session Count	integer	The number of pending sessions associated with the resource.
Citrix XenDesktop VDA Machine	Session Connection State Count Summary For Machine	Preparing Session Count	integer	The number of sessions being prepared that are associated with the resource.
Citrix XenDesktop VDA Machine	Session Connection State Count Summary For Machine	Reconnecting Session Count	integer	The number of reconnecting sessions associated with the resource.

Resource Kind	Resource Group	Resource Attribute	Attribute Type	Attribute Description
Citrix XenDesktop VDA Machine	Session Connection State Count Summary For Machine	Terminated Session Count	integer	The number of terminated sessions associated with the resource.
Citrix XenDesktop VDA Machine	Session Connection State Count Summary For Machine	Unknown Session Count	integer	The number of sessions in an unknown state that are associated with the resource.
Citrix XenDesktop VDA Machine	Session Count Summary For Machine	Anonymous Session Count	integer	The number of anonymous sessions associated with the resource.
Citrix XenDesktop VDA Machine	Session Count Summary For Machine	Application Session Count	integer	The number of application sessions associated with the resource.
Citrix XenDesktop VDA Machine	Session Count Summary For Machine	Desktop Session Count	integer	The number of desktop sessions associated with the resource.
Citrix XenDesktop VDA Machine	Session Count Summary For Machine	Peak Concurrent Session Count	integer	The peak concurrent sessions associated with the resource.
Citrix XenDesktop VDA Machine	Session Count Summary For Machine	Total Session Count	integer	The total number of sessions associated with the resource

See also:

[Alerts \(Citrix Virtual Apps & Desktops\)](#)