

Getting Started with vRealize Automation Code Stream

14 FEBRUARY 2020
vRealize Automation 8.0



vmware®

You can find the most up-to-date technical documentation on the VMware website at:

<https://docs.vmware.com/>

If you have comments about this documentation, submit your feedback to

docfeedback@vmware.com

VMware, Inc.
3401 Hillview Ave.
Palo Alto, CA 94304
www.vmware.com

Copyright © 2020 VMware, Inc. All rights reserved. [Copyright and trademark information.](#)

Contents

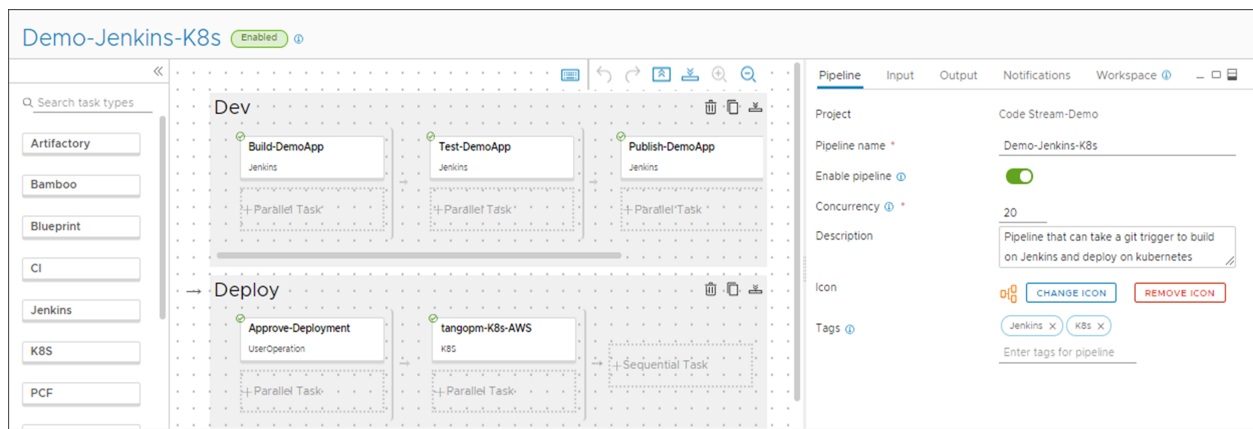
- 1** What Is vRealize Automation Code Stream 4
- 2** What Does vRealize Automation Code Stream Do 5
- 3** Before You Begin 8
- 4** How Do I Set It Up 10
- 5** What Else Can I Do With It 13

What Is vRealize Automation Code Stream

1

vRealize Automation Code Stream™ is continuous integration and continuous delivery (CI/CD) software that enables you to deliver software rapidly and reliably, with little overhead. vRealize Automation Code Stream supports deploying monolithic legacy applications, as well as Docker and Kubernetes containers running on multiple clouds.

With vRealize Automation Code Stream, you create pipelines that automate your entire DevOps lifecycle while using existing development tools such as Git and Jenkins.



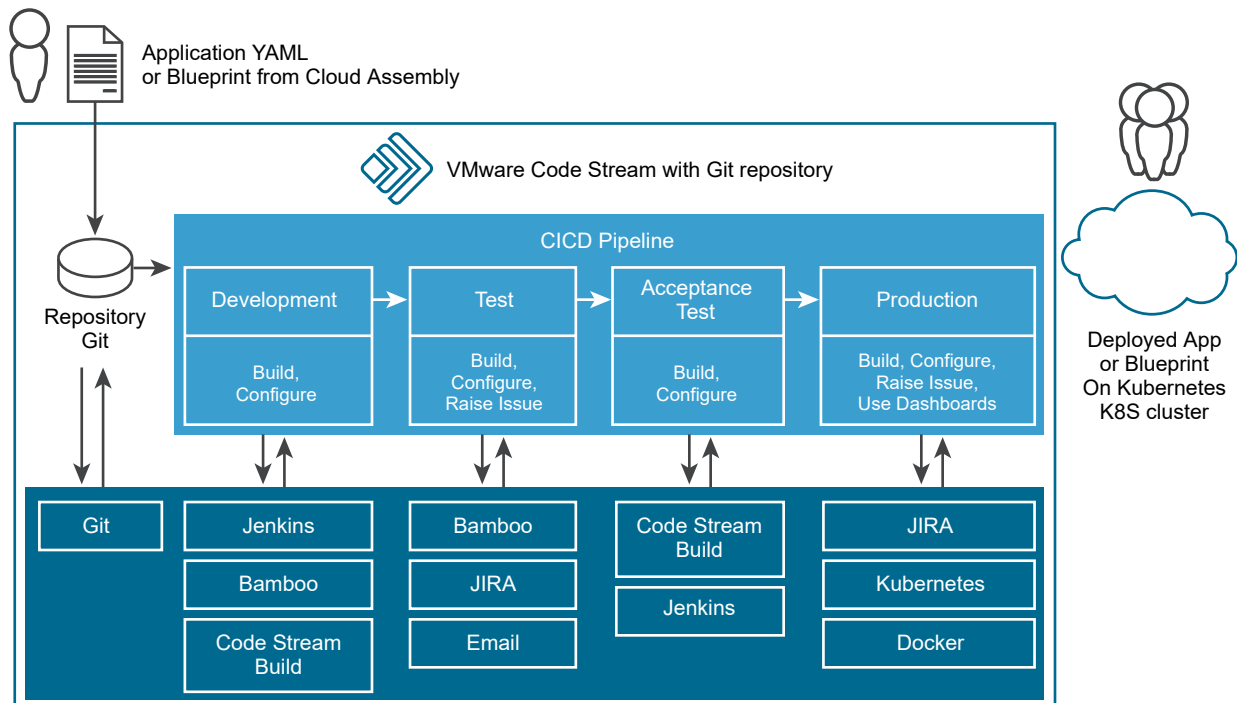
vRealize Automation Code Stream simplifies the ability to build, test, and deploy your applications, and increases your productivity as you release source code from the development repository, through testing, to production. vRealize Automation Code Stream supports custom and commercial applications, and objects such as blueprints.

What Does vRealize Automation Code Stream Do

2

vRealize Automation Code Stream models the tasks in your software release process, and automates the development and test of developer code to release it to production.

It integrates your release process with developer tools to accomplish specific tasks, and tracks all code artifacts and versions.



You create a pipeline that runs actions to build, deploy, test, and release your software. vRealize Automation Code Stream runs your software through each stage of the pipeline until it is ready to be released to production.

You integrate your pipeline with one or more DevOps tools such as data sources, repositories, or notification systems, which provide data for the pipeline to run.

For example, you might need to use several endpoints in a pipeline that downloads and deploys a Kubernetes application from GitHub to a Kubernetes cluster.



vRealize Automation Code Stream integrates with various endpoint types.

Table 2-1. vRealize Automation Code Stream Integrates with DevOps Tools

DevOps endpoint	What it does
Git	Pulls developer code from the repository and works with the Git trigger to trigger pipelines when developers check in code.
Kubernetes	Automates the steps to deploy, scale, and manage containerized applications.
vRealize Automation Code Stream Build	Creates native builds for continuous integration instead of using third-party integrations.
Jenkins	Builds code artifacts.
Email	Sends notifications to users.
JIRA	Creates a ticket when a pipeline fails.
Bugzilla	Creates and track bugs.

Why You Use vRealize Automation Code Stream

As a developer or a DevOps administrator, you use vRealize Automation Code Stream to automate your entire DevOps release lifecycle, while you continue to use your existing development tools. vRealize Automation Code Stream gives you:

- Easy automation
- Out-of-the-box plug-ins that work without open source

- Simple modeling experience and pipeline as code
- Straightforward integration with VMware Cloud PKS
- Reporting and insights
- End-to-end visibility with detailed dashboards
- Custom dashboards
- DevOps metrics and insights
- Governance
- Role-based access
- Secret and restricted variables, and approvals
- Projects

vRealize Automation Code Stream simplifies the deployment of software applications as your source code runs through the development and test phases, and is released to production. It also increases your productivity by using the Git trigger. When a developer checks in code, vRealize Automation Code Stream can trigger the pipeline and automate the build, test, and deployment of your application.

You can use vRealize Automation Code Stream with other vRealize Automation components.

- Deploy a vRealize Automation Cloud Assembly blueprint, and use the parameter values that the blueprint exposes.

For other ways to use vRealize Automation Code Stream, see [Chapter 5 What Else Can I Do with vRealize Automation Code Stream](#).

Before You Begin with vRealize Automation Code Stream

3

As a DevOps administrator or developer, you need to sign up for a MyVMware account and log in before you can begin to use vRealize Automation Code Stream.

Log In

After you log in, you can create, run, and manage pipelines.

Table 3-1. Preparing to Use vRealize Automation Code Stream

Step	Action	What you need to do
1	Create a MyVMware account.	Use your corporate email address to create your MyVMware account at https://my.vmware.com/ .
2	Log in to vRealize Automation.	Open HTTPS port 443 to outgoing traffic with access through the firewall to: <ul style="list-style-type: none">■ *.vmwareidentity.com■ gaz.csp-vidm-prod.com■ *.vmware.com
3	Open the vRealize Automation Code Stream service.	

Getting Started for DevOps Administrators

As a DevOps administrator, you have the Administrator role, and can create endpoints so that you can ensure that working instances are available for developers. You can create, manage, and trigger pipelines, and more.

For example, your developers might need to connect their pipeline tasks to a data source, repository, or notification system. These components provide data for their pipelines to run.

You can also integrate vRealize Automation Code Stream with other vRealize Automation components.

Getting Started for Developers

As a developer, you use vRealize Automation Code Stream to build and run pipelines, and monitor pipeline activity on the dashboards. You'll need the User role.

After you run a pipeline, you'll want to know whether:

- Your code succeeded through all stages of your pipeline. Results appear in **Executions**.
- Your pipeline failed and what caused the failure. Key errors appear in **Dashboards**.

Using the Smart Templates

To save time when you create a pipeline that natively builds, tests, and deploys your application, use the smart templates. Each template asks you several questions, and creates a pipeline based on how you answer the questions.

- Your build goals, environments, and where your source code resides.
- Your deployment goals, and where you intend to deploy your application. For example, the smart template identifies your existing Kubernetes clusters. You can then select a cluster to use when you build and deploy your application.

After the template creates the pipeline, you can modify the pipeline further to make it even more specific to your needs.

How Do I Set Up vRealize Automation Code Stream

4

As an administrator who sets up vRealize Automation Code Stream, after you log in, you can add endpoints, create and run pipelines, and view the results.

vRealize Automation Code Stream connects to endpoints to obtain data for your pipelines to run. In this use case, VMware Code Stream connects to a GitLab repository so that your pipeline can download a Kubernetes file.

A getting started process is also available as a guided setup in the vRealize Automation Code Stream user interface. Click the **Help** icon and click **Guided Setup**.

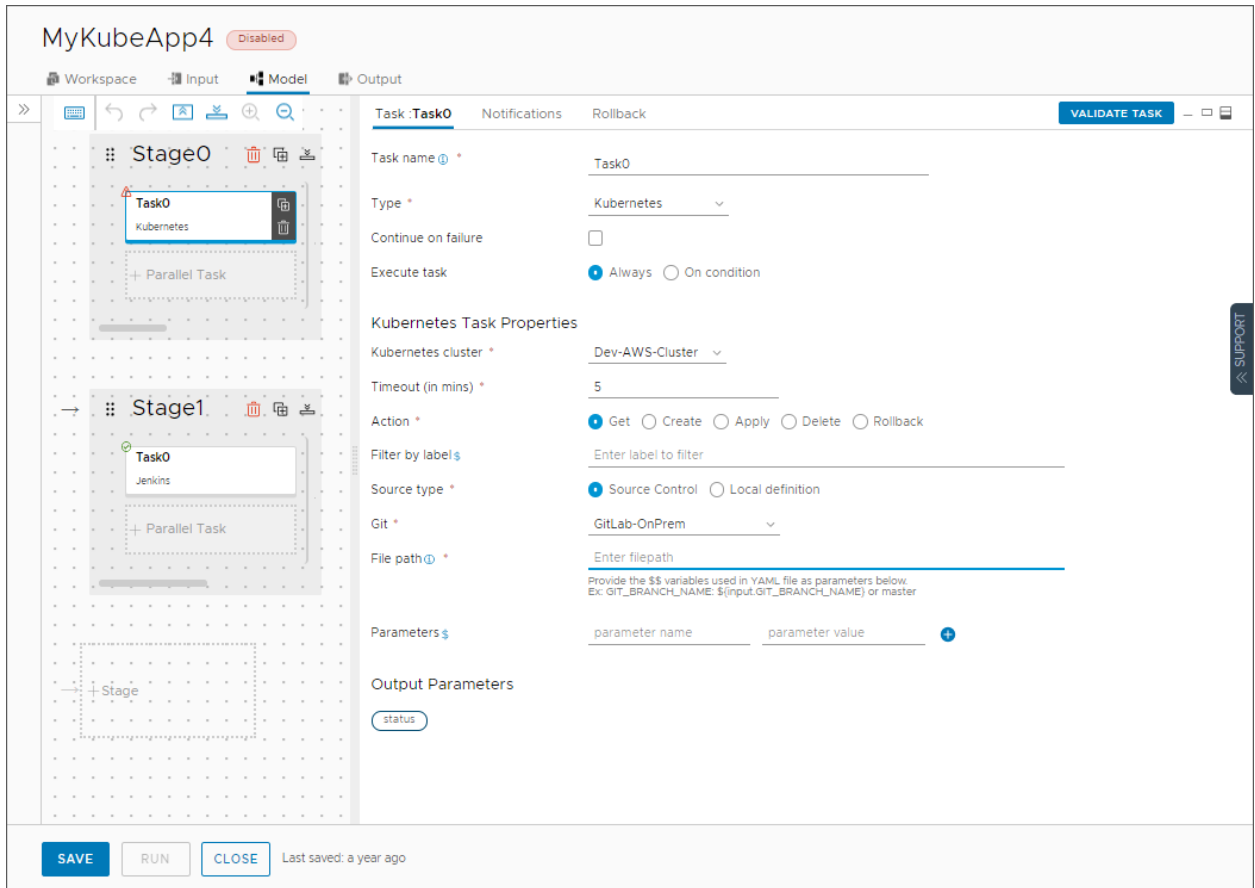
Prerequisites

- Verify that an on-premises GitLab or GitHub repository exists and contains the code that your pipeline will use.

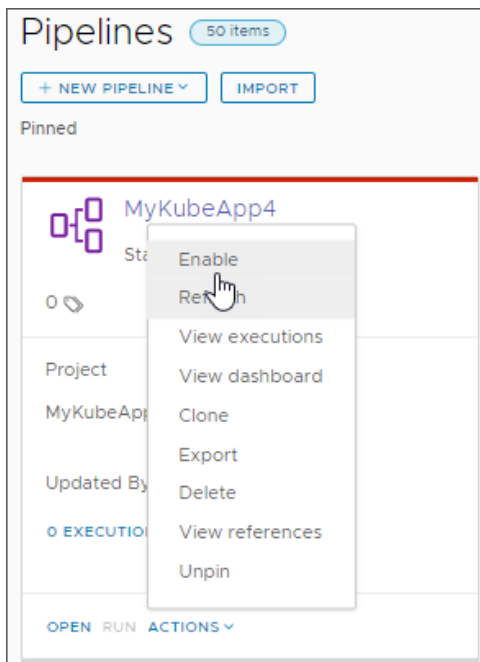
Procedure

- 1 Add a Git endpoint to connect vRealize Automation Code Stream to your on-premises GitLab repository.
 - a Click **Endpoints**.
 - b Select the Git endpoint type, and enter a name and description.
 - c Enter the remaining information.
 - d To test the connection to the endpoint, click **Validate**, then save the endpoint.

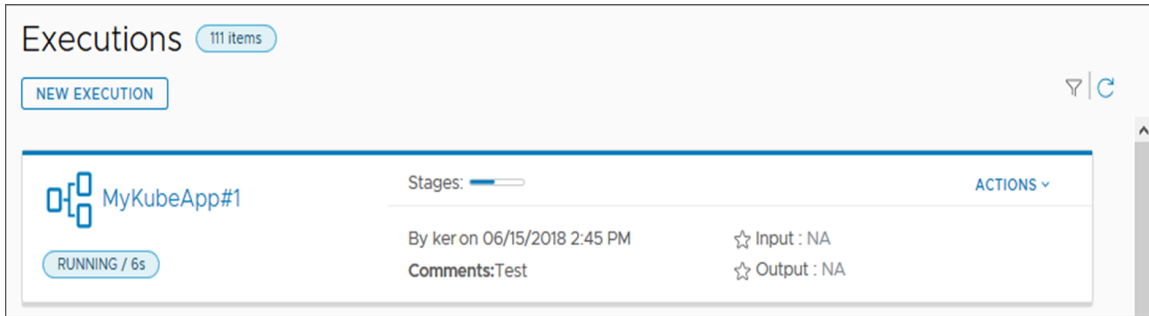
- Click **Pipelines**, create a pipeline, and add a task that uses the Git endpoint. You can optionally add an email notification.



- Save your pipeline, then click **Enable** to enable it to run.



- 4 When the pipeline card is enabled, click **Run**.
- 5 Click **Executions**, and watch your pipeline run.




- 6 If the pipeline fails, correct the problem and run it again.
- 7 Click **Dashboards**, and select your pipeline dashboard so that you can monitor the pipeline activity.

Results

Your pipeline ran, and downloaded the developer file from a GitLab instance. The pipeline task deployed the application to a Kubernetes cluster, and you monitored all the activity on the pipeline dashboard.

What to do next

If you don't find the information you need here, you can get more help in the product. 

- Click and read the signposts and tooltips in the user interface to get the context-specific information that you need where and when you need it.
- Open the In-product support panel and read the topics that appear for the active user interface page. You can also search in the panel to get answers to questions.

What Else Can I Do with vRealize Automation Code Stream

5

As a DevOps administrator or developer, you can use vRealize Automation Code Stream to create more complex pipelines that model and automate the steps in your DevOps release lifecycle.

To learn about...	See Using and managing
What it is and what you can do	What is it and how does it work
Modeling your release process	Setting up to model my release process
Planning a CICD, CI, or CD native build, and creating the pipeline	Planning to natively build, integrate, and deliver your code
Use cases	How do I continuously integrate code from my GitHub or GitLab repository into my pipeline And more!

For more information about what you can do with vRealize Automation Code Stream, use the in-product help in the help panel in vRealize Automation Code Stream.

The screenshot shows the 'Dashboards' page in vRealize Automation Code Stream. The main content area displays four dashboard cards: 'test', 'TEST_JEN...', 'TestBluepr...', and 'TestcS'. Each card shows 'Project: Codes...' and 'No description provided'. The right-hand side features a dark-themed 'HELP' panel. It includes a 'Search' tab, a 'Guided Setup' link, and a search bar with the text 'Search VMware docs'. Below this is another search bar with the placeholder 'Type your question here'. A section titled 'POPULAR TOPICS ON THIS PAGE' lists several questions, with a hand cursor pointing to 'What is a custom dashboard, and how do I create one?'. Other topics include adding widgets, finding and rearranging widgets, dashboard page actions, and user permissions. A 'SHOW MORE' link is at the bottom of the help panel.

By using the in-product help, you can learn about these features and much more:

- Communicating with endpoints
- Working with restricted resources and variables
- Working with projects
- Triggering a pipeline when developers update code

- Tracking KPIs for your pipelines on custom dashboards